



FOR SALE

PROPERTY SOLD BY KARL STOPIC

SPACIOUS & COMFORTABLE LIVING – BACKING ONTO GOLF COURSE!

If you want to give your family the best of comfortable and spacious living, then look no further than this absolutely gorgeous, large 4 bedroom 2 bathroom family home, positioned on a 718sqm elevated block in a tranquil setting backing onto the Meadow Springs Golf Course.

Built for comfort, this four bedroom, two bathroom family home has plenty of space for the entire family. Featuring 3 separate living areas, including a central family and adjoining living room with high raked ceilings, with French doors leading to a formal lounge/theatre room, plus a separate dining room or study/activity room. The master bedroom is positioned at the front side of the home with a his and her walk-in robe, en-suite with bath and separate shower and toilet.

The family wing features three queen-sized minor bedrooms, all with either walk-in or built-in wardrobes, bathroom with shower and bathtub, separate toilet. There is a large laundry with plenty of bench and cupboard space and access to the backyard.

The large modern kitchen is well appointed with breakfast bar, dishwasher, double sink, gas cooking, rangehood and built-in pantry, all overlooking the meals area and a large central family living area. It also has a shopper's entry from the double garage.

At the front of the home there is a formal lounge/theatre room with bay window overlooking the front garden, portico and streetscape. At the rear it has elevated and lovely views over the golf course.

The impressive front garden has been designed to be low maintenance and reticulated. In the backyard, there is a huge alfresco enclosure that provides a private outdoor entertaining area. This is an extension of the family living, connecting to the main living area of the home. The large backyard has plenty of space for the kids to play and room for a pool. There is a near new 6 x 3 metre workshop for the home handyman or perfect for extra storage space.

You'll fall in love with the absolutely beautiful gardens with an assortment of mature fruit trees including figs, bananas, olives, grapes, oranges, lemon & lime to name just a few. The garden is simply stunning with all its roses, lillies, poppies and frangipani's!

4 BED | 2 BATH | 0 CAR

PRICE:
SOLD

OPEN FOR INSPECTION:
N/A



Karl Stopic
0416231528
karlstopic@atrealty.com.au
www.atrealty.com.au

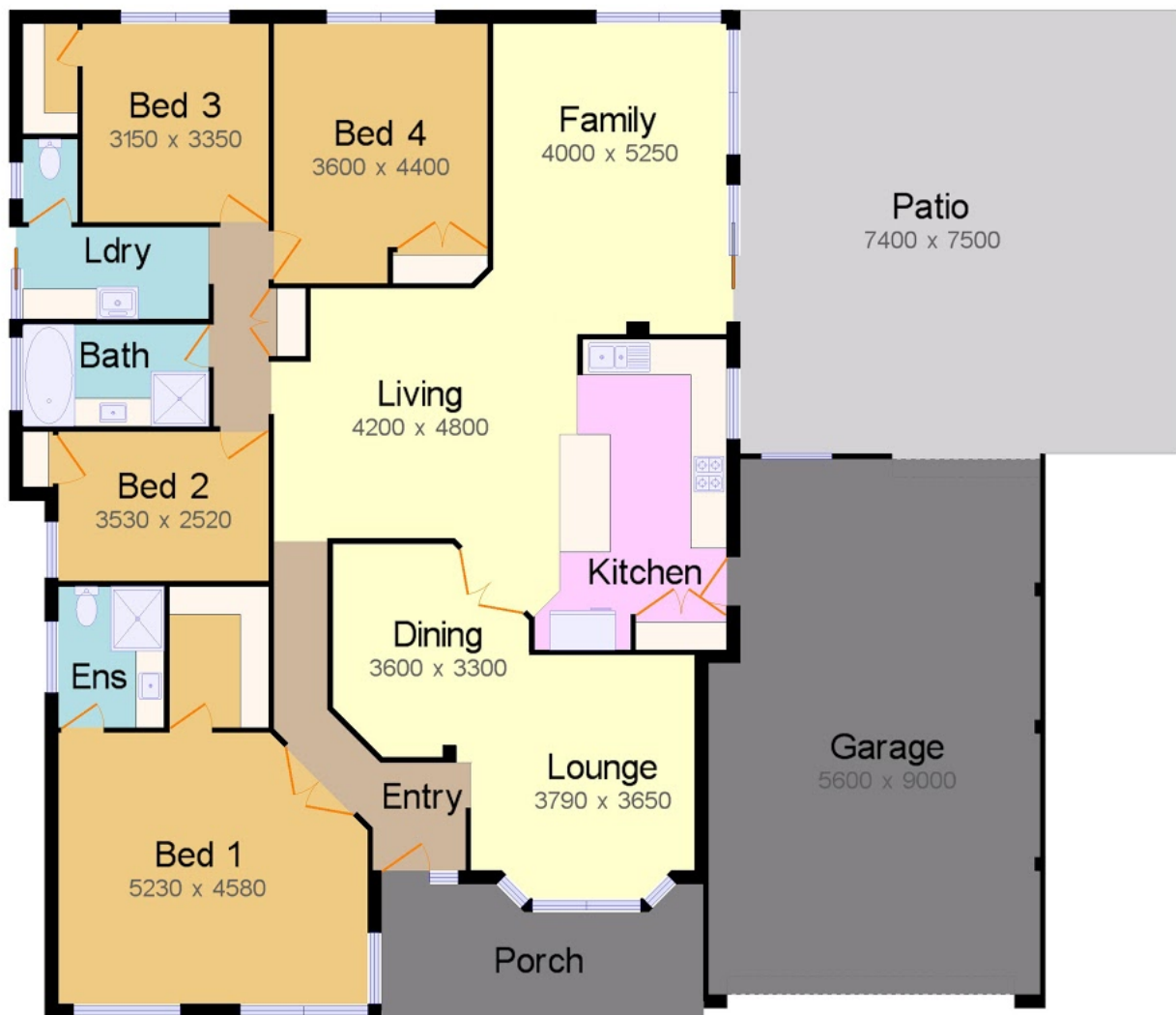
14 Waterville Retreat MEADOW SPRINGS



Block Size 716m² | 4 Bedrooms | 2 Bathrooms | 2 Car

Karl Stopic | 0416 231 528

Internal 195.5m² | External 117.7m² | Total 313.2m²



Disclaimer: Please note this floor plan is for marketing purposes and is to be used as a guide only. All dimensions are estimates only and may not be exact measurements.



REAL ESTATE FLOOR PLANS | houseguru.com.au | © 2017 House Guru Real Estate Photography™

Whilst every attempt has been made to ensure the accuracy of the floor plan contained here, measurements of doors, windows, rooms and any other items are approximate and no responsibility is taken for error, omission or mis-statement. This plan is for illustrative purposes only and should only be used as such by any prospective purchaser. The services systems and appliances shown have not been tested and no guarantee as to their operability or efficiency can be given.

Karl Stopic
0416231528

karlstopic@atrealty.com.au

www.atrealty.com.au

