



SOLD

IDEAL FAMILY HOME

LOCATED AND NESTLED BETWEEN TWO OF MOUNT GAMBIER'S MOST POPULAR SCHOOLS, MCDONALD PARK PRIMARY AND ST MARTINS COLLEGE. THIS HOME WOULD SUIT THE GROWING FAMILY, 4 BEDROOMS PLUS OFFICE, 2 BATHROOMS 3 TOILETS 2 LIVING AREAS AND A PRIVATE SECURE YARD, AS YOU CAN SEE THIS HOME TICKS MOST OF THE BOXES. THIS ONE OWNER HOME HAS BEEN WELL LOOKED AFTER AND THE NEW OWNER ONLY NEEDS TO WALK IN AND ENJOY. A WELL APPOINTED KITCHEN HAS LARGE WINDOWS THAT LOOK INTO A ESTABLISHED YARD, AND ALSO ADJOINS A MEALS FAMILY AREA. A LARGE LOUNGE DINING AREA IS COMPLEMENTED BY A WELL POSITIONED SLOW COMBUSTION HEATER, THAT WARMS THE ENTIRE HOME.

UPSTAIRS YOU HAVE 4 GOOD SIZE BEDROOMS, THE MAIN IS LARGE WITH WALK IN ROBE AND EN-SUITE PLUS A PRIVATE BALCONY TO SIT AND RELAX WITH A BEER OR WINE.

A DOUBLE GARAGE UNDER THE MAIN ROOF WITH INSIDE ACCESS, A PRIVATE COURTYARD TO ENJOY THE SUN, PLUS THE HOME HAS REAR YARD ACCESS AND A GARDEN SHED.

IF YOU ARE LOOKING FOR MORE SPACE IN A GREAT LOCATION THIS IS THE HOME FOR YOU.

4 BED | 2 BATH | 2 CAR

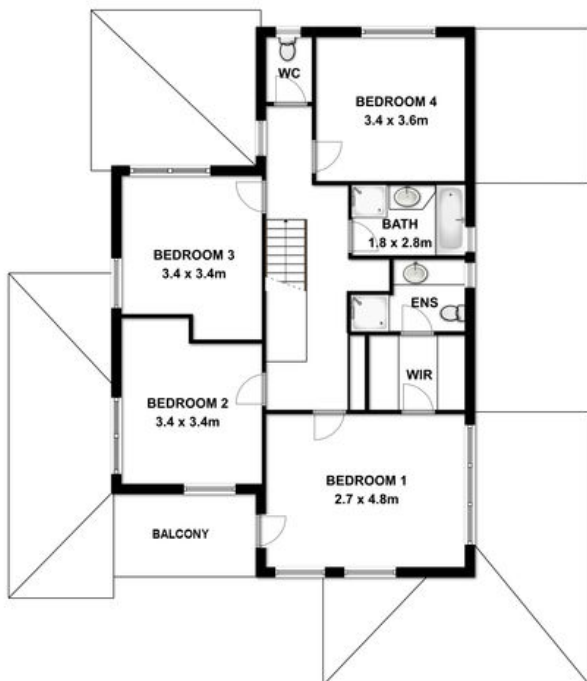
PRICE:
\$350,000

OPEN FOR INSPECTION:
N/A

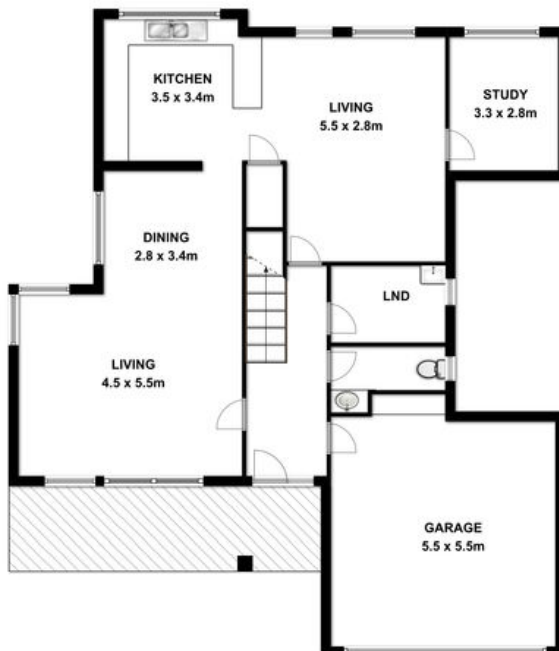


Peter Dempsey
0418854393
peterdempsey@atrealty.com.au
peterdempseyatrealty.com
RLA: 269823

FIRST FLOOR



GROUND FLOOR



This drawing is for illustration purpose only. All measurements are approximate only and information intended to be relied upon should be independently verified.

Disclaimer: Please note this floor plan is for marketing purposes and is to be used as a guide only. All dimensions are estimates only and may not be exact measurements.