



## FOR SALE

### SPACIOUS AND TIMELESS ELEGANCE

Classic 1950's elegant and beautifully presented solid brick home provides spacious living proportions both internally and externally all on one generous allotment of 770M2 approximately.

In Contrast:

- Four spacious bedrooms (two with BIR), or three and a sizeable study
- Generous rumpus or family room
- Polished wooden floors in most common areas
- Formal lounge and decorative ceilings
- Eat-in kitchen with retro electric stove and oven
- Two bathrooms
- Wall unit heating and cooling
- Tidy gardens with rain water tank, garage, tool-shed and verandah
- Secure linear three car park space

Perfectly liveable as is or add your personal touches to bring out the glamour within. Ideally located between the city and Adelaide's finest beaches with public transport within metres of your doorstep. Access to a variety of cultural shops, schools such Mount Carmel College, Woodville High and Pennington Primary are just minutes away.

4 BED | 2 BATH | 3 CAR

PRICE:

\$430,000 - \$450,000

OPEN FOR INSPECTION:

N/A



**Lee Nguyen**

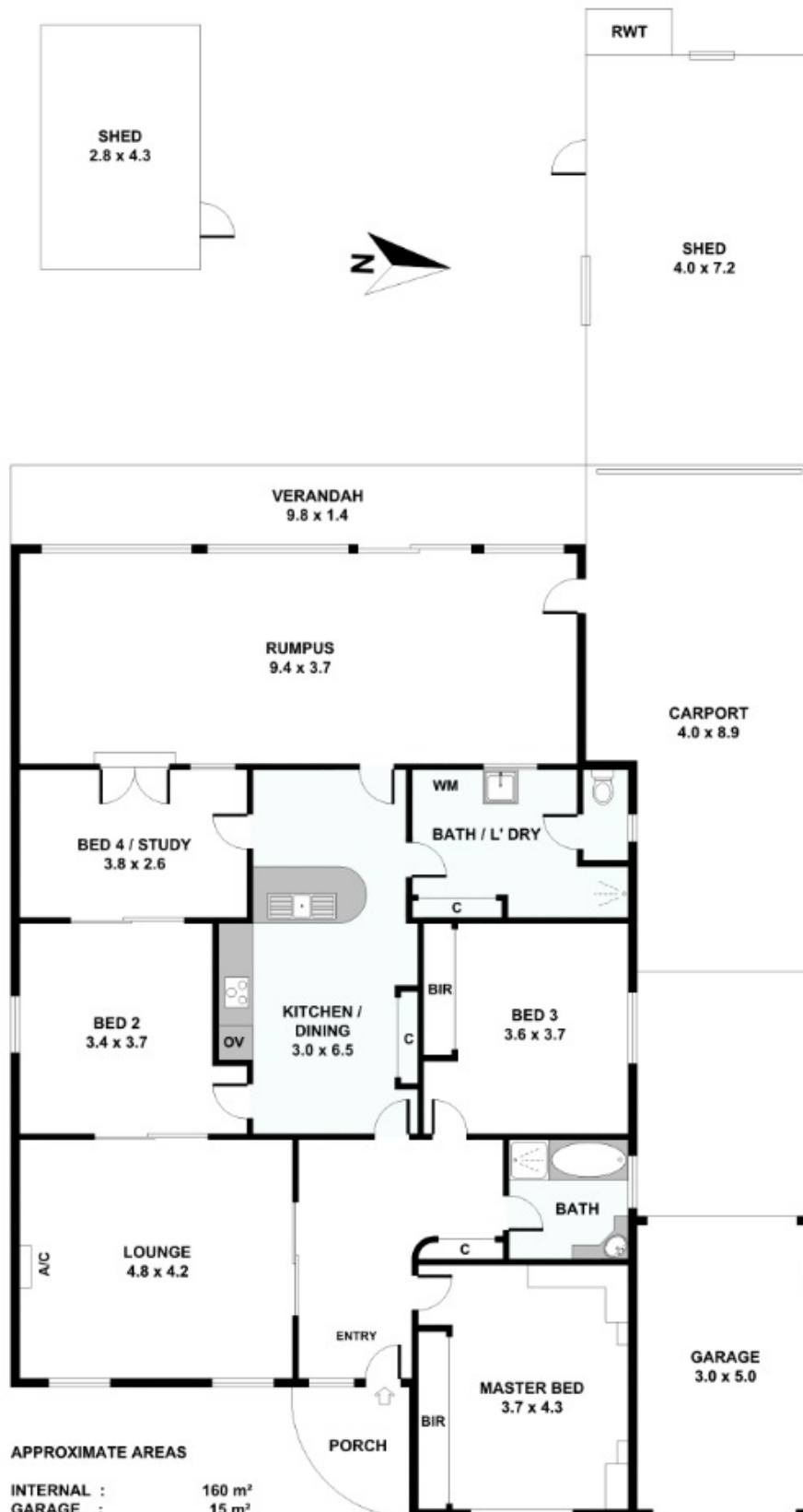
**0413996422**

lee@atrealty.com.au1

[www.atrealty.com.au](http://www.atrealty.com.au)

RLA: 269823

# 27 Addison Road, Pennington



Disclaimer: Please note this floor plan is for marketing purposes and is to be used as a guide only. All dimensions are estimates only and may not be exact measurements.