

**SOLD**

## HIGH ON THE HILL - POOL - WITH VIEWS OUT TO THE OCEAN

### INSPECTIONS BY APPOINTMENT WELCOME

If its views, great house, and pool, look no further. This home has been built to optimise its hilltop location with panoramic views over the Broadwater and out to the Sea.

This delightful split level family home is ideal for entertaining on its wide timber deck while your friend will be amazed at your view. This ever-changing view will surprise everyone with something different every time you look, from the sunrise to the full moon shimmering on the water, or sit back and watch the twinkle of lights by night.

### ENTRY LEVEL:

- Large lounge room with high ceilings.

### SPLIT TO TOP :

- Family living/dining room
- Kitchen
- Powder room
- Large master bedroom with ensuite, walk in robe
- Large covered decking

### LOWER LEVEL:

- Three spacious bedrooms with built-in robes
- Main bathroom with bathtub
- Separate toilet
- Laundry
- Covered patio

### ADDITIONAL FEATURES:

- Salt water in ground 11-meter pool
- polished timber floors on upper level
- Quality carpets in Bedrooms
- Gas cooktop, dishwasher and plenty of storage
- Mesh roll-down blinds on upper deck
- Ceiling fans throughout

**4 BED | 2 BATH | 2 CAR**

**PRICE:**  
\$713,000

**OPEN FOR INSPECTION:**  
N/A

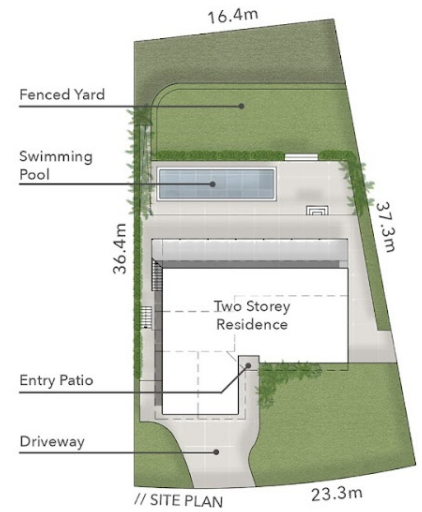
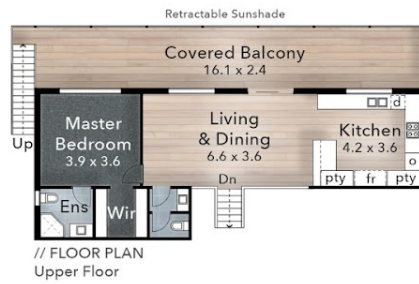
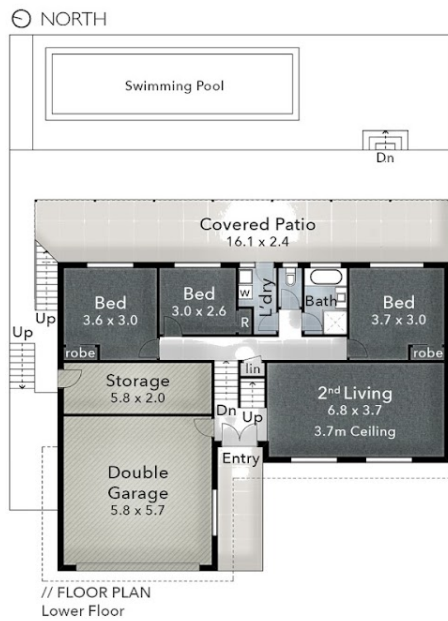


**Sharon Smythe**  
**0412195500**  
sharonsmythe@atrealty.com.au  
[www.atrealty.com.au](http://www.atrealty.com.au)

# 25 Sierra Vista Boulevard, Mt Bilambil Heights

Total Approximate Floor Area 295 sqm  
Total Land Area 736 sqm

Terranora Creek Views



SIERRA VISTA  
BOULEVARD

Whilst every attempt has been made to ensure the accuracy of the floor plan. Measurements of doors, windows rooms and any other items are approximate and no responsibility is taken for any error, omission or misstatement. This plan is for illustrative purposes only and should be used as such by any prospective purchaser.

Disclaimer: Please note this floor plan is for marketing purposes and is to be used as a guide only. All dimensions are estimates only and may not be exact measurements.