

2-4 GLOVER COURT, MONTVILLE, QLD, 4560



SOLD

ONE OF THE HINTERLANDS' FINEST BLOCKS

UNDER CONTRACT

5,581M2 , (about an acre and a quarter) of near land, corner block with multiple possible entrances. First time on the market since the owners built in 1990. Presented in park like condition the 5,581m2 corner block is near level land in a charming quiet street. Landscaped to showcase an abundance of garden walks by the house, expanses of lawn and well-established shade trees. Approximately 5 ks to Montville and 12 ks to Maleny privacy is assured. The block is like a blank canvas, if four car accommodation isn't sufficient there is plenty of inviting space to build a seriously large shed and or pool.

The land is accessed from the main driveway and two other possible entrances. If you desire separate accommodation, this block lends itself perfectly to develop a second dwelling. This could be positioned as close or as far away as you desire from the main dwelling.

Immaculate presentation inside, new carpet throughout, you could move in without needing to spend any money, adding your own touches as you wished.

Well designed with lots of glass on the North facing walls, provide abundant natural light and inviting sea breezes on the warmer days.

Two living areas and two dining areas, both formal and informal, including a sunken lounge and high vaulted ceilings in the formal section

A very modern layout, with the ensuited master bedroom boasting his and hers walk in robes.

The three guests bedrooms and family bathroom at the other of the house, assure space and privacy.

Large blocks of land like this are increasingly scarce. This should prove to be a great investment as you enjoy the peace of the Hinterland lifestyle.

PS. check out the 360 degree virtual tour and walk in the garden video. Links below

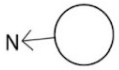
4 BED | 2 BATH | 4 CAR

PRICE:
\$730,000

OPEN FOR INSPECTION:
N/A



Ray Scarfe
0414943269
ray.scarfe@atrealty.com.au
www.atrealty.com.au



2-4 GLOVER COURT MONTVILLE

Disclaimer: Please note this floor plan is for marketing purposes and is to be used as a guide only. All dimensions are estimates only and may not be exact measurements.