



SOLD

IMPRESSIVE HOME FOR DEFINITE SALE

This beautifully preserved c1930 residence is privately nestled on an easy-care 601.9sqm parcel of land, the timelessly elegant home is blessed with the era's grand proportions, and combines period appeal with classical contemporary style. There is far more accommodation than the facade suggests, and a wonderful alfresco entertainer, its generous covered dining terrace extends to private level gardens. Its versatile floorplan accommodates 4 bedrooms and adjoining study enclosed front verandah through to the sitting area and formal lounge and dining spaces open through bifold doors to the deck. A tasteful light filled kitchen complete with dishwasher double gas top stove and ample bench and cupboard space.

Features such as polished timber floorboards, high ornate ceilings, and leadlight windows serve as a charming reminder of the home's heritage. Additional features include 2 bathrooms elegant wide hallway, ample storage space throughout built-in wardrobes A/C and fans, drive through access room for a shed car access on both sides fully fenced backyard.

It enjoys one of Lismore's most desirable locations with a brief walk down to the CBD. Phone today to secure your private inspection.

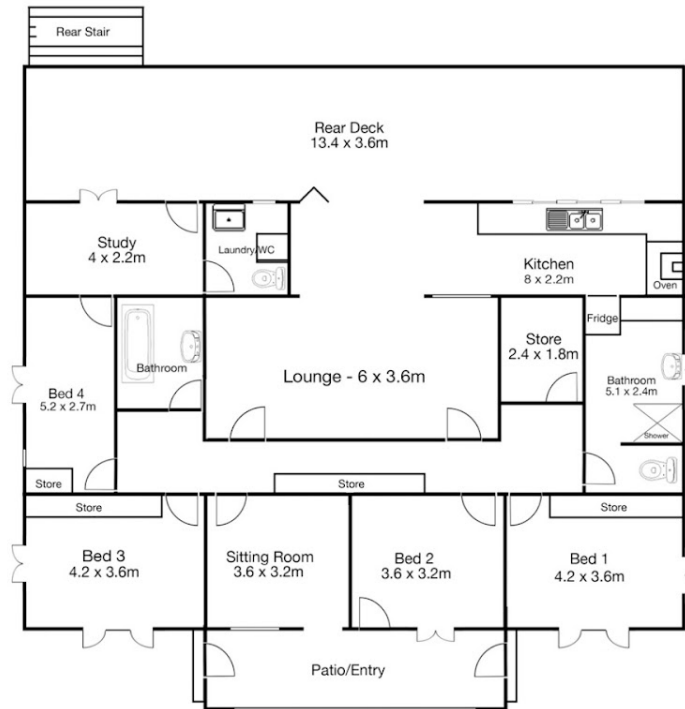
4 BED | 2 BATH | 2 CAR

PRICE:
\$568,000

OPEN FOR INSPECTION:
N/A



Peta Thompson
0403123115
petathompson@atrealty.com.au
www.atrealty.com.au



Total Floor Area
174SM - Approx

15 Allen st. Girards Hill

Disclaimer: Please note this floor plan is for marketing purposes and is to be used as a guide only. All dimensions are estimates only and may not be exact measurements.