



**SOLD**

## PERFECT FAMILY HOME

PERFECT FOR MUM, PERFECT FOR DAD, AND JUST RIGHT FOR THE KIDS. THIS BEAUTIFULLY PRESENTED HOME TICKS ALL THE RIGHT BOXES. LARGE OPEN KITCHEN MEALS FAMILY AREA, IDEAL FOR THE WHOLE FAMILY WITH FUNCTIONAL MODERN KITCHEN, WITH STAINLESS STEEL PRODUCTS, NEW FLOOR COVERINGS, NEUTRAL TONES, PLUS THIS AREA IS BEING COMPLEMENTED BY CENTRAL GAS HEATING, SPLIT SYSTEM AIR-CONDITIONING, AND THE LUXURY OF SLOW COMBUSTION HEATING FOR THOSE WINTER MONTHS.

THERE IS A THEATRE/GAMES ROOM WITH PROJECTOR AND BIG SCREEN TO RELAX AND WATCH YOUR FAVOURITE MOVIES OR SPORTING EVENTS.

THREE GOOD SIZE DOUBLE BEDROOMS 2 WITH BUILT IN ROBES AND THE MAIN WITH WALK IN ROBE AND EN-SUITE, CLASSY ANGLED WINDOWS IN THE MAIN BEDROOM, GIVES THIS ROOM THE WOW FACTOR.

A STUDY OR 4TH BEDROOM GIVES YOU THAT EXTRA SPACE.

SLIDING DOORS FROM THE FAMILY LIVING LEADS TO A LARGE COVERED PATIO AREA, WITH CAFE BLINDS SO YOU CAN ENTERTAIN FAMILY AND FRIENDS ALL YEAR ROUND.

AN EASY MAINTENANCE REAR YARD IS PRIVATE AND WELL ESTABLISHED.

WITH A SINGLE GARAGE UNDER THE MAIN ROOF PLUS REAR YARD ACCESS TO A APPROXIMATE 9 X 6 COLOUR BOND GARAGE, PERFECT FOR THE HANDY MAN TO ENJOY AND STORE HIS TOYS.

SOLAR POWER, SPA BATH, HUGE LAUNDRY FULLY ENCLOSED YARD, CEILING FANS ARE JUST A COUPLE OF THIS HOMES EXTRAS

THIS HOME IS SITUATED AT THE END ON A LOVELY QUITE CUL DE SAC AND IS ELEVATED GIVING IT GRAND PRESENCE.

HIS HOME IS WELL WORTH A INSPECTION

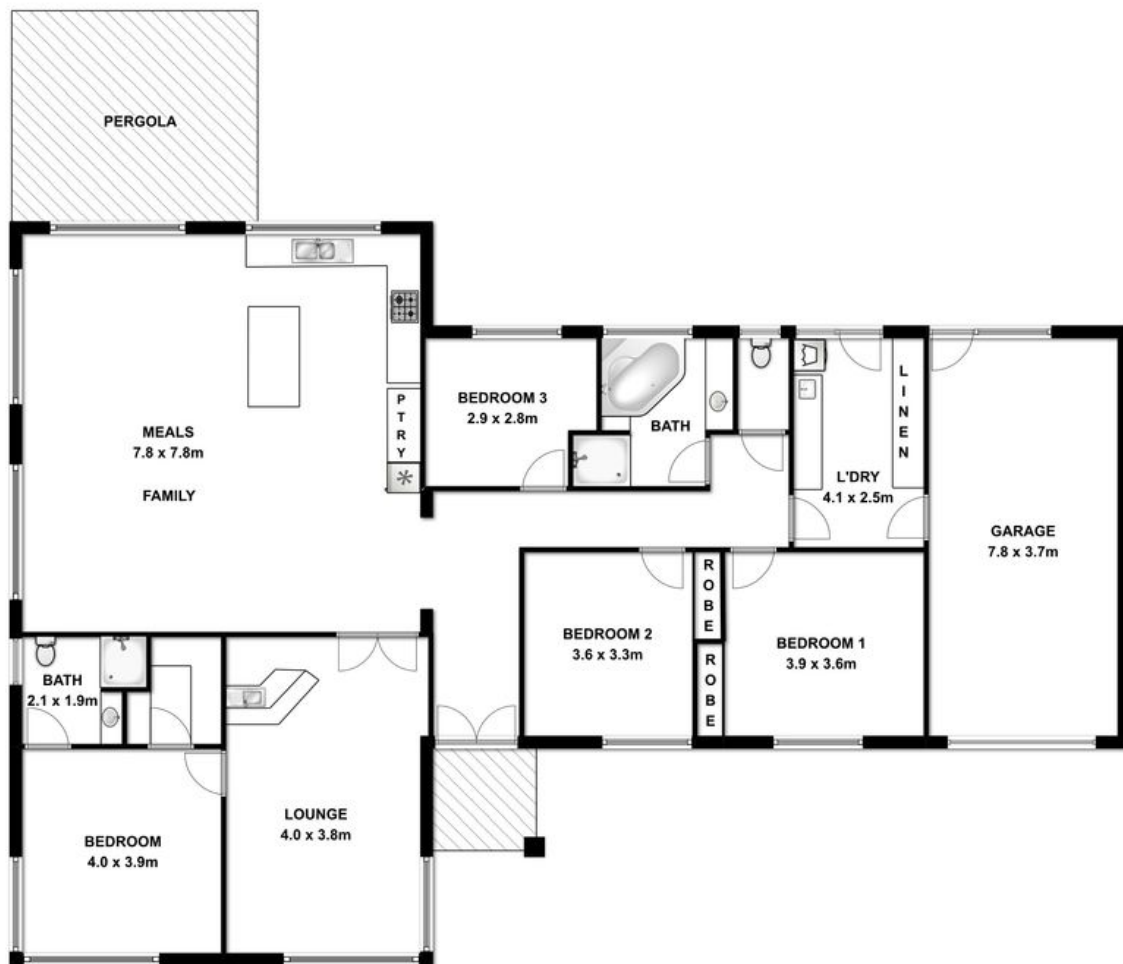
**4 BED | 2 BATH | 3 CAR**

**PRICE:**  
\$372,500

**OPEN FOR INSPECTION:**  
N/A



**Peter Dempsey**  
**0418854393**  
peterdempsey@atrealty.com.au  
[peterdempseyatrealty.com](http://peterdempseyatrealty.com)  
RLA: 269823



**This drawing is for illustration purpose only. All measurements are approximate only and information intended to be relied upon should be independently verified.**

Disclaimer: Please note this floor plan is for marketing purposes and is to be used as a guide only. All dimensions are estimates only and may not be exact measurements.