



SOLD

STUNNING FAMILY HOME ON A CORNER ALLOTMENT!

Classical design elements shine throughout this generous residence. Offering the ultimate in zoned family living over a tastefully styled floor plan, this home features L shaped lounge and dining, 3 generous sized bedrooms with built in robes, master with a full ensuite, family/casual dining open to the oversized kitchen.

To the rear you have an additional rumpus room which can easily be converted to another master bedroom, office, studio or theatre. The possibilities is vast as the home is situated on 650sqm (approx) on a corner block which allows the scope for multi unit developments.

Situated in the heart of Keilor Downs, it is minutes from both secondary and primary schools with additionally public transportation, access to the calder highway, airport and less than 30 minutes drive to the melbourne CBD.

4 BED | 2 BATH | 3 CAR

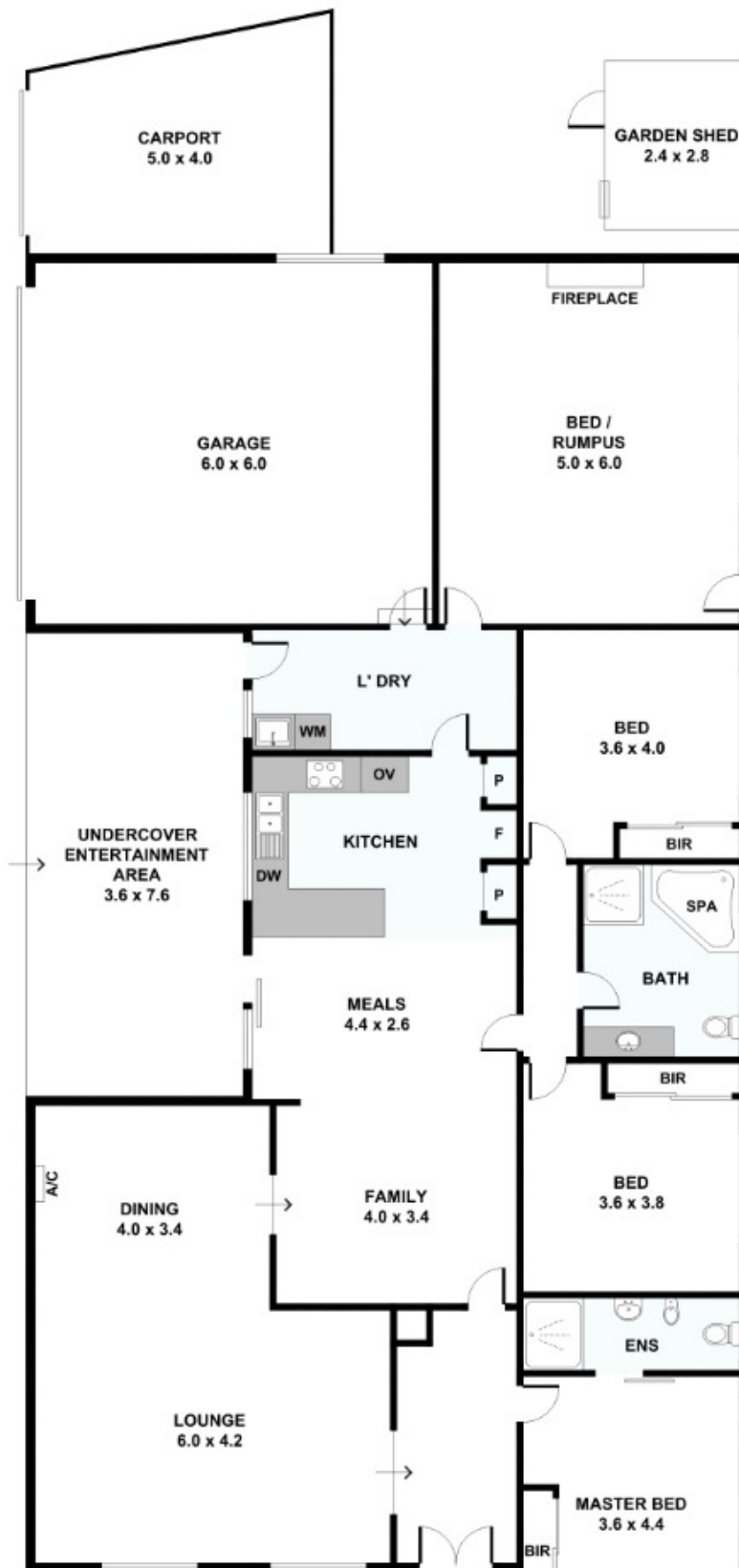
PRICE:
\$642,000

OPEN FOR INSPECTION:
N/A



Chau Ngo
0479099831
chau@atrealty.com.au
www.atrealty.com.au

6 Buna Way, Keilor Downs



Disclaimer: Please note this floor plan is for marketing purposes and is to be used as a guide only. All dimensions are estimates only and may not be exact measurements.