



FOR SALE

DON'T BLINK OR YOU WILL MISS OUT!

Presenting to the market this magnificent corner block home located in the prestigious Eaton's Rise Estate situated on a generous 980m2 block. This home really is a must see with extras including but not limited to Solar Heated Saltwater Inground Swimming Pool, Solar Panels – 6KW, 6000L Water Tank, Ducted Air, Modern Kitchen with Caesar Stone Benchtops, Crimsafe Screens and Five generous bedrooms!

This home oozes street appeal and continues to impress. As you enter through the double door entry way you are greeted with a lovely stacked stone feature and open balcony overhead that leads you to the master suite. As you continue through, this home quite literally unfolds and you will be torn as to which way you look! To the left, an enjoyable space for the family to keep entertained including a built-in study area for homework etc or straight ahead towards the open plan modern kitchen, complete with Caesar Stone benchtops, soft close cabinetry and oversized Island bench which creates the perfect spot to come together while the cook in the family is preparing the evening meal. On these beautiful summer evenings there is no better space than the outdoor entertaining area overlooking the manicured yard, gardens and pool to enjoy your meal, enjoy a cold beverage and have a swim. All living spaces lead to the alfresco entertaining area making it the social hub of the home.

Upstairs won't disappoint either, with the Master Suite having it's own large ensuite with spa and well organised walk in robe separate from the other bedrooms (remember the overhead balcony in the entry!) Bedrooms two, three, four and five also boast built in robes and ceiling fans for when the 8 zone app controlled ducted air-conditioning system isn't required. Bedroom five is conveniently located on the lower level with it's own bathroom making it the perfect accommodation for visitors.

This home will tick all of the boxes and more. Don't delay call Natalie today on 0419 689 309.

At a Glance:
980m2 Fully Fenced Block
Solar Panels – 6kw
Solar Heated Saltwater Pool
6000L Water Tank
Computerised Watering System
Manicured Gardens

5 BED | 3 BATH | 2 CAR

PRICE:

Offers over \$769,000

OPEN FOR INSPECTION:

N/A



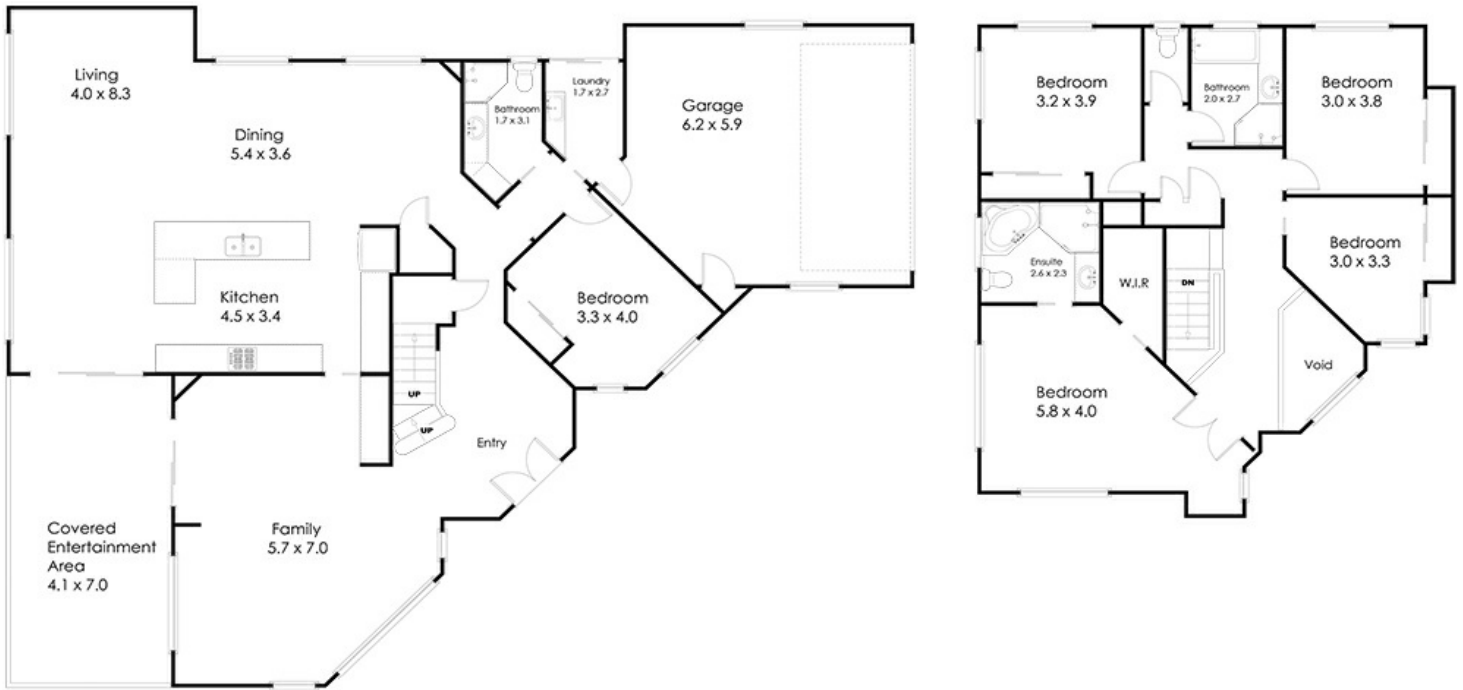
Natalie Johnston

0419689309

natalie@atrealty.com.au

Natalieatrealty

Whilst every attempt has been made to ensure the accuracy of the floor plan contained here, measurements of doors, windows rooms and any other items and structures are approximate and no responsibility is taken for any error, omission or mis-statement. Bathroom and kitchen fittings, cupboards and door types and laundry appliances and windows are taken and approximate the actual being installed.
 This plan is for illustrative purposes and should be used as such by any prospective buyer.
 It is drawn by Eagle Eye Photography Service, www.eagleeyehq.com.au Copyright 2019.
 All rights reserved.
 No reproduction without license, contact photographer for more information.



29 Riversleigh Crescent Eatons Hill 4037

@realty

Disclaimer: Please note this floor plan is for marketing purposes and is to be used as a guide only. All dimensions are estimates only and may not be exact measurements.