



**SOLD**

## PARADISE FOUND IN CALAMVALE – THE PERFECT FAMILY HOME

3 2,5 2  
PARADISE FOUND IN CALAMVALE – THE PERFECT FAMILY HOME

If you are searching for a secure yet private three-bedroom townhouse close to schools, minutes walks to cafes and restaurants, you have found it right here!

Once you drive up to this amazing home with its lovely street appeal and private courtyard, located with minutes walk to restaurants and cafés, you will feel 'at home.' This immaculate home, with an open-plan design with natural flow to the rear courtyard, is perfect when returning home after a busy day at work. The kitchen and private patio area are ideal for entertaining, while the swimming pool, tennis and squash court adds to the feeling of relaxation. The kitchen features plenty of cupboard space with quality appliances and the three double bedrooms are well separated for privacy - all with built-in wardrobes. This lovely home has a secure 2 car garage with automatic garage door for ease of access and as an added convenience, it is only a few minutes stroll to shopping centre/transport.

- Open plan living and separate dining
- Great kitchen space that includes oven, hot plate, range hood and dishwasher
- Double bedrooms with built in wardrobes
- Tiled bathrooms
- Air-conditioned and ceiling fans
- Nice airy and leafy outlook
- Great privacy and security
- Secure 2 car garage with extra storage space
- Minutes walk to Calamvale shopping centre
- Access to Pool and Tennis court

Looking for a home or an investment property, this property has so much to offer.

Call Ronny on 0449 150 001 for inspection times - always happy to help

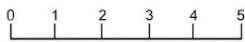
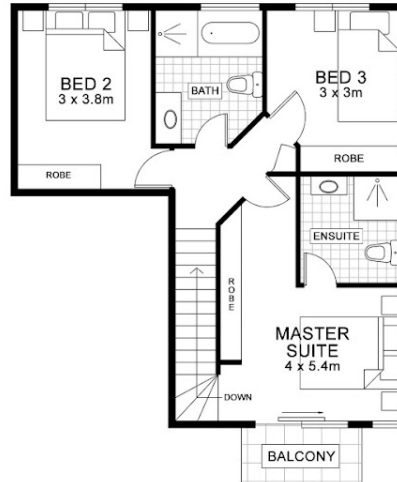
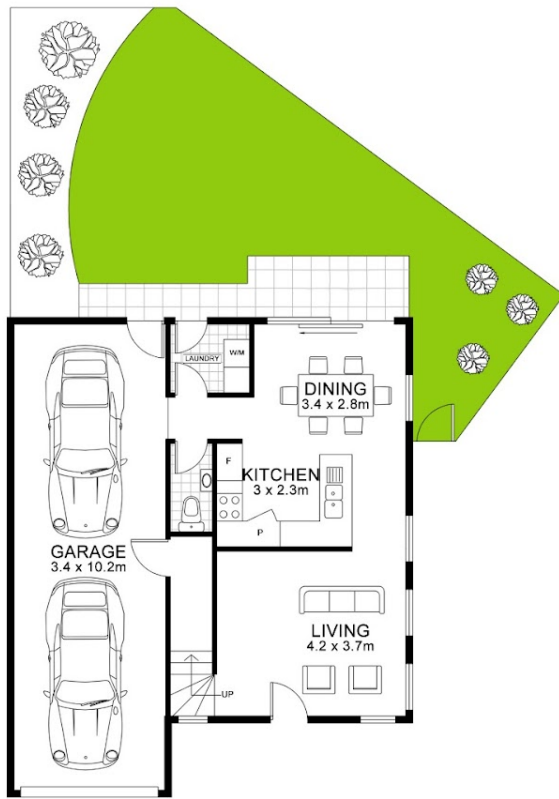
**3 BED | 2 BATH | 2 CAR**

**PRICE:**  
\$265,000

**OPEN FOR INSPECTION:**  
N/A



**Ronny Cronqvist**  
**0449150001**  
ronny@atrealty.com.au  
[www.atrealty.com.au](http://www.atrealty.com.au)



Floor plan measurements are approximate and for illustrative purposes only. Scale in metres.  
 Floor plan created by Rolley Photo Media. All rights reserved, Copyright 2016

INTERNAL : 107m<sup>2</sup>  
 CARPORT : 36m<sup>2</sup>  
 EXTERNAL : 10m<sup>2</sup>  
**TOTAL AREA : 153m<sup>2</sup>**

17/36 Benhiam Street, Calamvale



Disclaimer: Please note this floor plan is for marketing purposes and is to be used as a guide only. All dimensions are estimates only and may not be exact measurements.

Ronny Cronqvist  
 0449150001  
 ronny@atrealty.com.au  
[www.atrealty.com.au](http://www.atrealty.com.au)

