

# SOLD

## HEART STOPPING OCEAN VIEWS OF BURLEIGH & BEYOND

As you walk into this brand new apartment high up in the sky on the North East corner of the stunning newly completed 'Burleigh Boardwalk', it is impossible to not miss a breath and heart beat by the site of the stunning infinite ocean view! The breathtaking views span from the beautiful Hinterland to the Burleigh Headland..... "Burleigh Boardwalk" is perfectly positioned with the ultimate location with an easy stroll to Burleigh Heads seaside surf village and surf at your back door!

Surrounded by nearly 1/2 acre of private lush tropical gardens and contemporary architecture, a world of leisure and recreation becomes part of your home. Nowhere else is this level of quality amenities available on the beach front in Burleigh Heads.

Designed with lifestyle in mind, this ultra stylish apartment features floor to ceiling glass, thoughtful design elements and layout. With the latest amenities, colour schemes and top-end appliances, what more could you ask for ?

- \* Huge 151 msq - Floor to ceiling glass with N/E ocean, sand & beach views
- \* State of the art kitchen and spacious bright living area
- \* 2 car spaces side by side + storage cage, high speed lifts
- \* Large wrap around balcony to accommodate lounge/ dining and BBQ area
- \* Huge main bedroom with floor to ceiling glass and access to the large balcony
- \* Minutes from James St & the finest restaurants
- \* Pet friendly subject to approval
- \* Close to schools, shops & transport
- \* 25 min drive from the airport
- \* Pool , spa & fully equipped gymnasium
- \* Private yoga terrace & AI fresco BBQ and dining facilities

The Building – released June 2018

Located in one of Queensland's most iconic beach suburbs, fronted by glistening sea and exquisite beaches, Boardwalk Burleigh Beach reveals the true meaning of scenic luxury. 20 stories up, from the sky to the vibrant local streets, Boardwalk Burleigh Beach integrates seamlessly into the coastal setting.

Sellers situation have changed since purchased off the plan. All realistic offers are invited. BE QUICK!

3 BED | 2 BATH | 2 CAR

PRICE:  
\$1,300,000

OPEN FOR INSPECTION:  
N/A



**Adam Sadler**  
**0413203454**

adam.sadler@atrealty.com.au

[www.atrealty.com.au](http://www.atrealty.com.au)

**TYPE A**  
3 BEDROOM 2 BATH

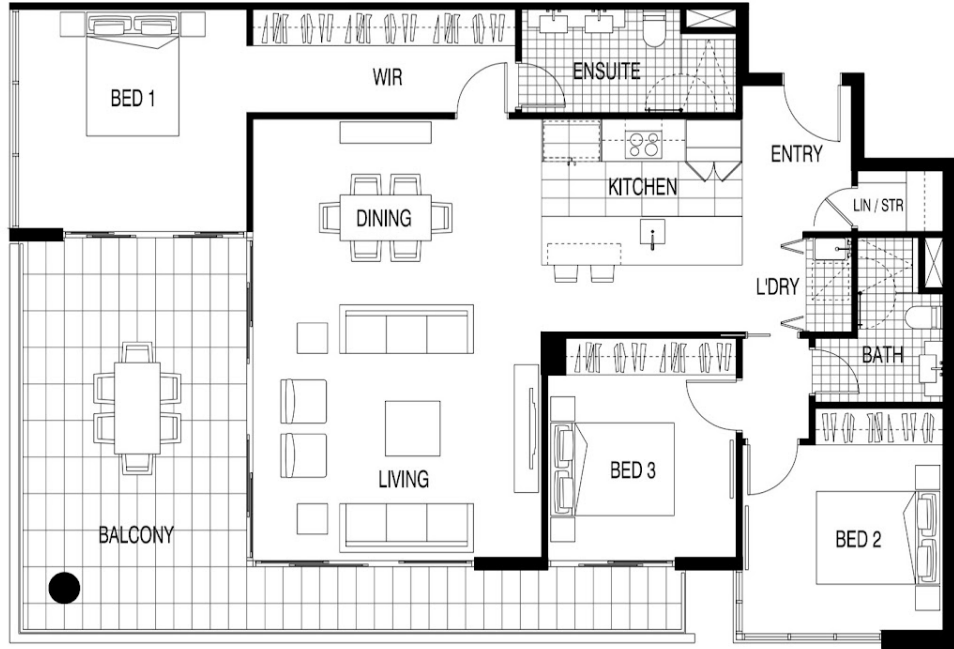
INTERNAL AREA - 118m<sup>2</sup>  
EXTERNAL AREA - 33m<sup>2</sup>

**TOTAL AREA - 151m<sup>2</sup>**



70-72 The Esplanade  
Burleigh Heads QLD 4220 Australia  
**1800 490 215**  
[boardwalkburleigh.com.au](http://boardwalkburleigh.com.au)

Plan not to scale. Furniture not included. Parties should note that while all reasonable care has been taken in the preparation of this material, the information is of a preliminary nature only, and is subject to change at any time. Amalgamated Property Group, Merro Property Group, their partners, contractors, marketing agents and all other related parties disclaim all liability should any information or matter in this material differ from the content of any or the actual constructed development.



Disclaimer: Please note this floor plan is for marketing purposes and is to be used as a guide only. All dimensions are estimates only and may not be exact measurements.