

# FOR SALE

## SOLD! NORMAN PARK QUEENSLANDER ON 809M2!

SOLD!

Ladies and gentlemen, we have a rare and exclusive lifestyle opportunity for you only 4km to the CBD!

Situated on 809m2 in a quiet, sought-after Norman Park location is this large renovated Queenslander.

The beautiful Queenslander sits on double the size of most blocks available this close to the city CBD.

The home embodies character, quality and space, upstairs and down, inside and out. Features include:

- 4 bedrooms (2 upstairs and 2 downstairs) and 2 bathrooms (1 upstairs and 1 downstairs)
- lounge and dining areas upstairs as well as a huge media/lounge/rumpus area downstairs
- beautifully renovated kitchen that opens out onto a large, breezy and private outdoor deck
- office areas upstairs and down as well as additional sunroom and sleepout areas upstairs
- provision to install an ensuite bathroom and walk-in robe area for main upstairs bedroom
- traditional Queenslander character with VJ walls, high ceilings & timber floors throughout
- large split-system air-conditioning units & fans upstairs and down to stay cool in summer
- ample yard space for the kids and pets and plenty of room for a swimming pool if desired
- spacious storage shed & lean-to area out the back and low-maintenance gardens/grounds
- parking space for 3 vehicles and provision for front gates to allow secure parking if needed
- only 4km to CBD and near Norman Park State, Churchie, Lourdes Hill, Loreto and Villanova

Folks, properties of this size and quality in prime locations sell very quickly, so don't miss out!

To secure your slice of paradise only 4km to Brisbane, call now, buy today and enjoy your future!

4 BED | 2 BATH | 3 CAR

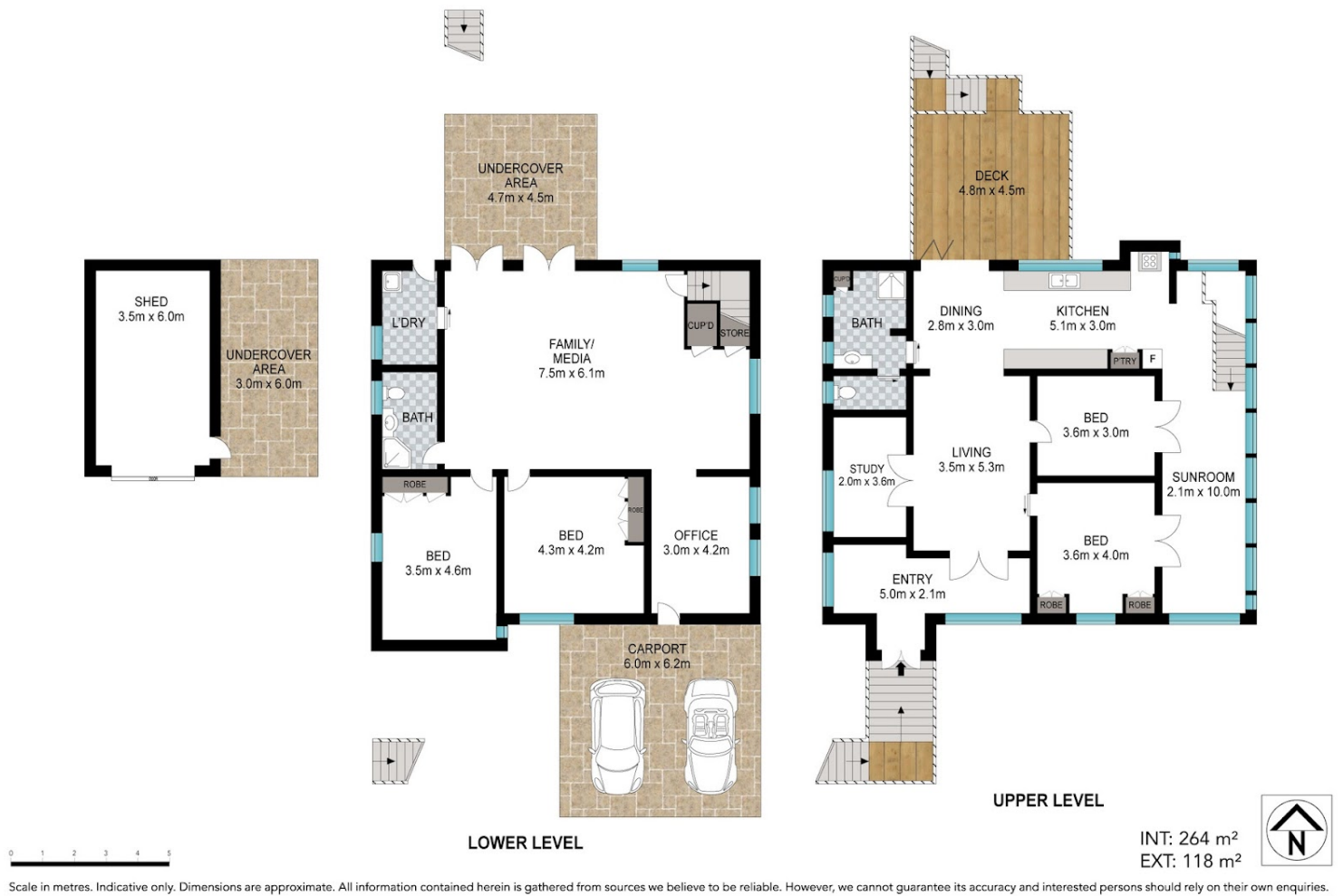
PRICE:  
SOLD!

OPEN FOR INSPECTION:  
N/A



**Ben Tafolo**  
**0419260719**

tafolo@atrealty.com.au  
teamtafolo.com.au



44 Real Avenue, Norman Park



Disclaimer: Please note this floor plan is for marketing purposes and is to be used as a guide only. All dimensions are estimates only and may not be exact measurements.