



SOLD

INVESTORS & OCCUPIERS - THIS IS A MUST SEE!

Are you hesitant to buy a dream home just because the property which you saw last time had proximity issues?

Well, we have just the right property where you get everything at an irresistible price. Why, you ask?

The seller of this property is damn serious to do a deal as soon as possible. He wants it gone!!

Just 4.0 km away from the city, this property offers an oversized bedroom along with a spacious kitchen. If we talk about schools, restaurants, parks, sporting clubs, supermarkets etc., they all are just a few steps away.

In the first bedroom, there is a private balcony along with a built-in wardrobe while the second bedroom offers promising size and space.

Through the private balcony, you get to taste the cool & fresh air every morning. In the kitchen, you get plenty of bench and cupboard space.

And did we tell you about the separate dining area? Well, at the price offered by the seller, it is more than you might ask for.

Following remarkable features are included in this property -

- a) Air-conditioned
- b) 2 balconies
- c) Intercom
- d) Private, secure lock up garage
- e) Separate toilet
- f) City sights
- g) Pet friendly complex
- h) Easy access to the M3 (Pacific Motorway)
- i) Minutes to major hospitals and public transport both bus and train

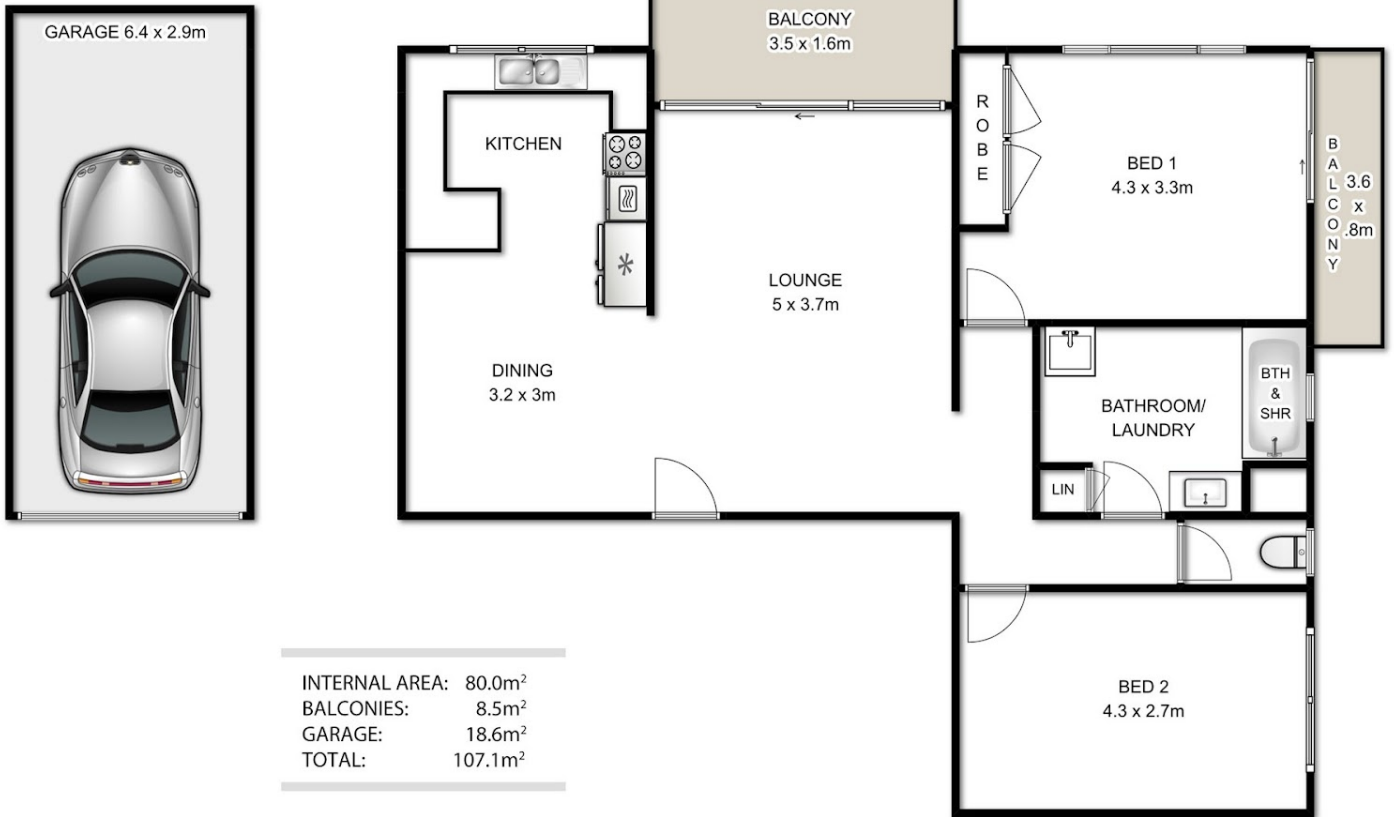
2 BED | 1 BATH | 1 CAR

PRICE:
\$320,000

OPEN FOR INSPECTION:
N/A



Adrian Matthews
0403171644
adrianmatthews@atrealty.com.au
www.atrealty.com.au



Whilst every attempt has been made to ensure the accuracy of the floor plan contained here, measurements of doors, windows, rooms and any other items are approximate and no responsibility is taken for any error, omission, or mis-statement. This plan is for illustrative purposes only and should be used as such by any prospective buyer. Created by www.highshots.com.

Disclaimer: Please note this floor plan is for marketing purposes and is to be used as a guide only. All dimensions are estimates only and may not be exact measurements.