



**SOLD**

## IMMACULATE TOWNHOUSE AVAILABLE NOW!!

This spacious townhouse is now vacant and ready for new owners....Book your inspection today!

Featuring an open plan layout combining lounge, dining and kitchen with stainless appliances including a dishwasher and gas cooktop. The outdoor space is great for Summer entertaining with an undercover alfresco area directly accessed from the lounge and a generous sized yard that wraps around the side.

Upstairs you will find 3 great size bedrooms all with ceiling fans and builtin robes, master with ensuite, and a separate modern bathroom. You also have the convenience of an additional powder room/toilet downstairs and a separate internal laundry.

Low bodycorp and separate water meter make this townhouse an excellent addition to any property portfolio.

Complex is ideally located in Calamvale close to shops, schools and transport and features an inground swimming pool with attached community patio with bbq. Very tidy, well maintained unit and complex.

### Property features:

- 3 spacious bedrooms with builtin robes and ceiling fans, airconditioning to the master
- Airconditioned lounge
- Stainless appliances including dishwasher, gas cooktop
- 2 full bathrooms plus Powder room downstairs
- Single remote garage
- Private courtyard with side gate access
- Gas Hot water
- Separate water meter
- Rain water used for garden taps, toilets and laundry, lowering your council rates
- Low bodycorp \$26.82pw

### Complex Features:

- Inground swimming pool
- Community facilities including undercover patio with dining and bbq options
- Very tidy well maintained complex with lovely garden surrounds.

**3 BED | 2 BATH | 1 CAR**

**PRICE:**  
\$322,600

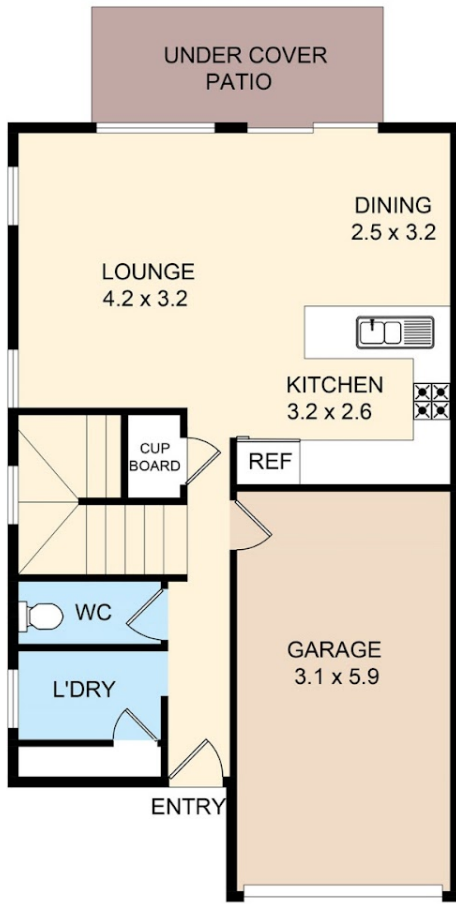
**OPEN FOR INSPECTION:**  
N/A



**Paivi Dickie**  
**0412909541**  
paivi@atrealty.com.au  
[www.atrealty.com.au](http://www.atrealty.com.au)

Please Note -

This plan is an illustration and it is only to be used as a guide to layout. Room dimensions are approximations.



GROUND FLOOR



TOP FLOOR

## 1/18 Dianne Crt

Disclaimer: Please note this floor plan is for marketing purposes and is to be used as a guide only. All dimensions are estimates only and may not be exact measurements.