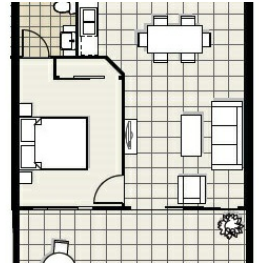


1/9 HOUGHTON ST, PETRIE, QLD, 4502



FOR LEASE

RARE OPPORTUNITY - END UNIT.

Rarely do rentals become available in ever popular "Petrie on the Park"
From Sunday November 10th we have available a two-bedroom end unit on the ground floor with deck at rear. overlooking peaceful Sweeney Reserve with bike and walkway tracks.

Features include:

- Air-conditioned Main bedroom has fan, en-suite and built in robes
- Second bedroom has built in robes and fan
- Kitchen with plenty of cupboards with meals area.
- Study nook
- Air-conditioned Lounge room flows to a spacious entertaining deck overlooking the flora and fauna.
- Front courtyard
- Car park
- Pool to cool off in the coming hot months.
- Deck overlooking Lagoon where you could entertain with friends.

Benefits.

- Extremely quiet complex with quality tenants. Many long term.
- Close proximity to train.. Approx. 7-10 minutes walk to train
- 5 Minute Walk to Woolworths Shopping Centre.
- University completed in 2020
- New Shopping Precinct complete with cafes and restaurants by end 2020
- Bus close on Main Road. .74 Km.
- Half an hour drive to Redcliffe Peninsular
- Close to Freeway to the Sunshine Coast

Private Inspections invited. Please call Kay for an appointment.

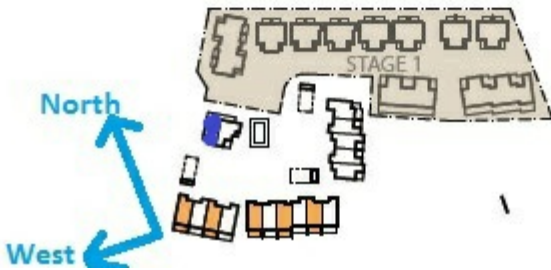
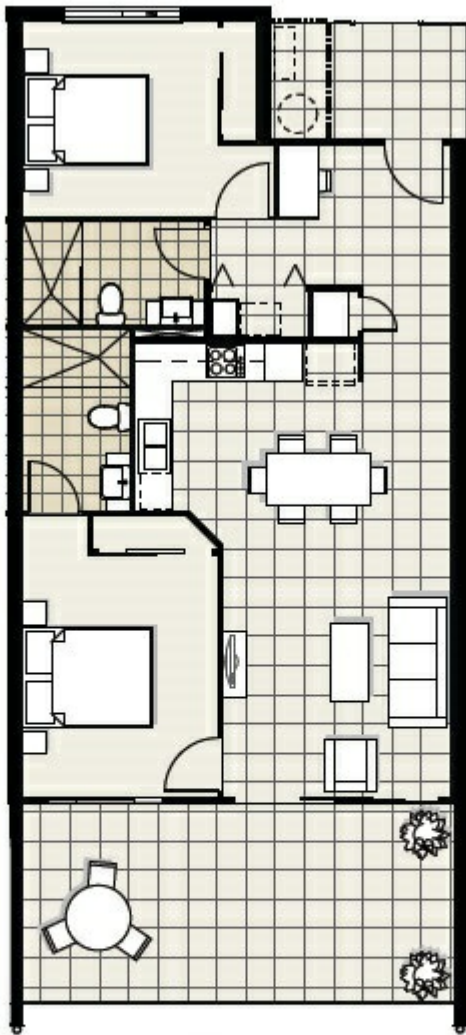
2 BED | 2 BATH | 1 CAR

PRICE:
\$350 per week

OPEN FOR INSPECTION:
N/A



Kay-Laraine Denny
0405388392
kay@atrealty.com.au
www.atrealty.com.au



Disclaimer: Please note this floor plan is for marketing purposes and is to be used as a guide only. All dimensions are estimates only and may not be exact measurements.