

SOLD

FAMILY GRANDEUR IN PREMIUM POCKET.

Enviably poised at the end of a quiet court, this quality-constructed residence is positioned within the highly esteemed Lakes Estate and adjoins tranquil parkland. Thoughtfully designed and executed, this substantial residence will afford the family an exceptional experience where socialising and entertaining are imbued into everyday living.

Set back from the road for privacy, striking kerbside appeal is instantly achieved through the adoption of Daniel Robertson brick, stylish rendered façade and portico entry offering a warm welcome. Stepping inside, every element has been carefully curated to showcase the series of sophisticated spaces, beginning with the grand entry boasting 12-foot ceilings combined with polished floorboards and a crisp white palette to accentuate the feeling of volume and spaciousness.

Three steps invite guests into the sumptuous formal lounge and dining (carpeted), serviced by a wet bar comprising granite benchtop, cupboards and bar fridge provision. Visual connection between the interior and exterior has been well achieved, with French doors opening up to a private courtyard highlighting a water feature.

Double doors separate the lounge from the casual living area where the combined family and meals area merge into one large domain. The beautiful conservatory bay window and polished floorboards have been employed to develop a sense of sophistication while the generous island bench takes centre stage in the uncompromising kitchen. Additional features include; stainless steel appliances: electric oven, gas stove and Miele dishwasher, sleek granite benchtops, generous storage including a walk-in pantry, in addition to a breakfast bar.

A glass sliding door opens up to a spectacular outdoor oasis, beginning with a covered and paved patio leading invitingly to an enviable outdoor entertaining area overlooking the 36 square metre in-ground salt water pool. Affording family enjoyment all year round and framed by manicured gardens, this perfect oasis blends effortlessly with the house.

Boasting five bedrooms, the master offers spacious proportions, featuring an extensively fitted walk-in robe and a decadent full ensuite incorporating a spa, twin vanity topped with marble and separate toilet. Zoned together off a private hall, three additional bedrooms are robed, two with walk-ins. The central main bathroom enjoys a shower, bath and separate toilet.

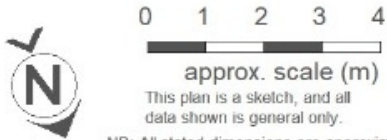
5 BED | 2 BATH | 2 CAR

PRICE:
\$895,000

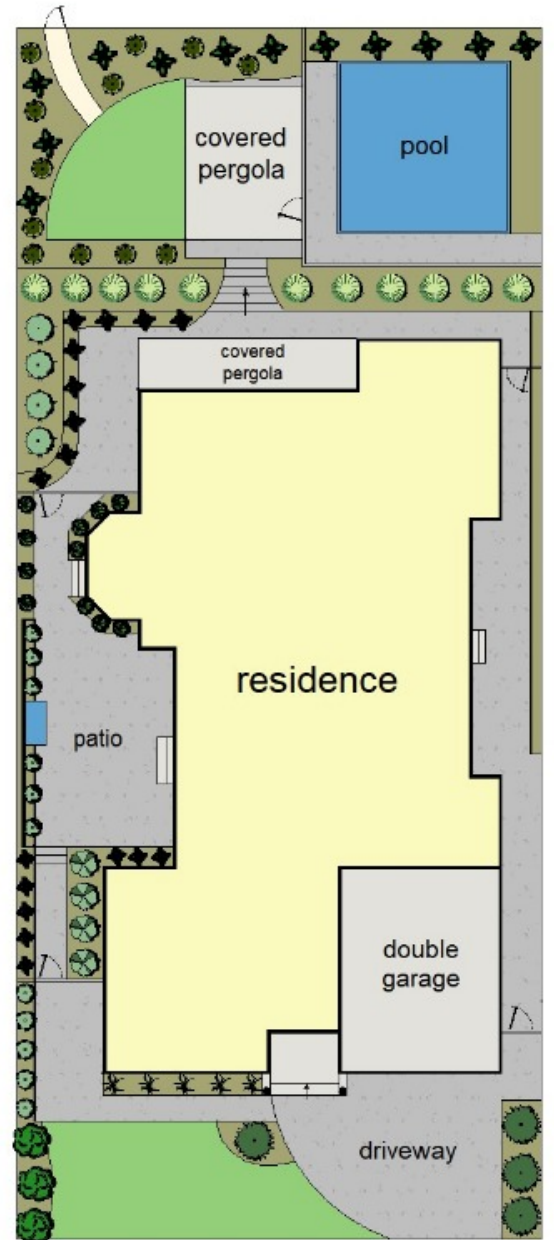
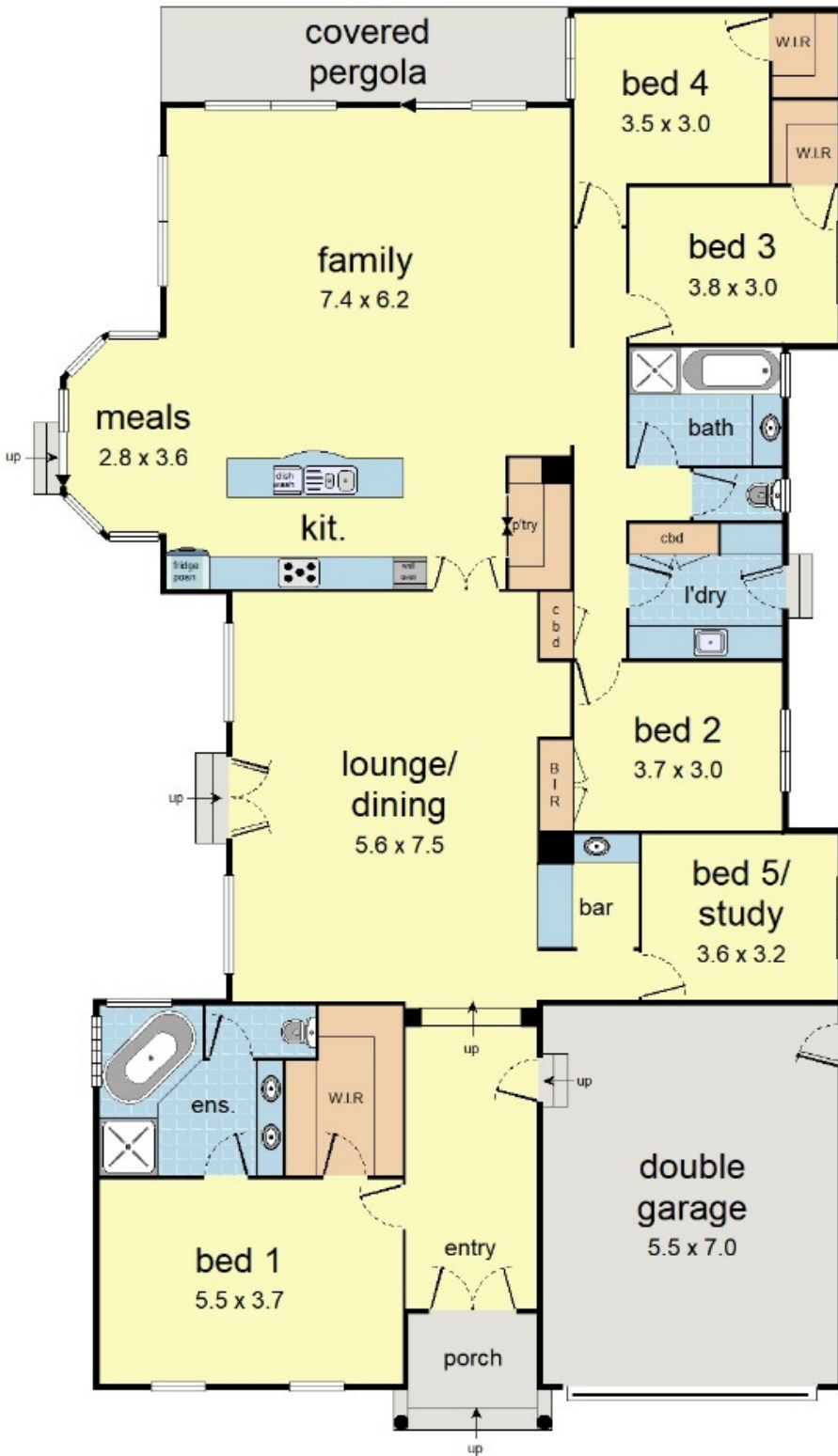
OPEN FOR INSPECTION:
N/A



Maree Slade
0419519282
 maree.slade@atrealty.com.au
www.atrealty.com.au



This plan is a sketch, and all data shown is general only.
 NB: All stated dimensions are approximate only & should not be taken as definite.



Disclaimer: Please note this floor plan is for marketing purposes and is to be used as a guide only. All dimensions are estimates only and may not be exact measurements.