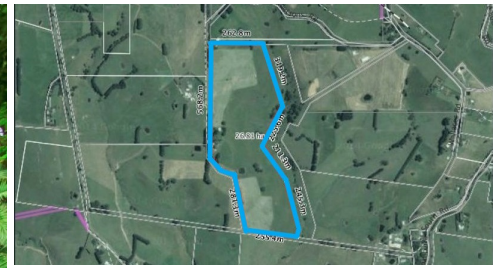


175 ANDERSONS ROAD, KORUMBURRA, VIC, 3950



SOLD

HILL END FARM COTTAGE 66 ACRES APPROX – KORUMBURRA

Presenting Hill End Farm Cottage 5.5km from Korumburra town centre. This property offers tranquil lifestyle in the heart of Korumburra and South Gippsland amazing views of the hills and surrounds.

Set on 66 acres approx. and 15 acres of creek frontage. The current vendor leases 60 acres out that is on a month to month basis, the lease is open to continuing, so you can have a dual income from the both the cottage and the land, or if you like you could retain all 66 acres for your own use. The property is well suited for grazing, hay, or breeding your own livestock, there is a hayshed, decommissioned dairy, machinery shed, stock yards and storage and garden sheds and a dam on the property.

The property offers 2 dwellings, ample shedding. The main home offers 4 bedrooms with high ceilings external French doors. This heritage style home offers timber floors throughout and has a modern twist and the views are simply incredible from many different rooms of the home. Kitchen offers open plan living, dining area & bathroom has been designed to encapsulate the region in its beauty.

The second dwelling a 2-bedroom cottage, lounge area with wood fire and kitchen, bathroom and undercover bbq area, with spectacular views & spa pool and could be rented out for either long - or short – term income.

Call Daniel & Tamara Today to View This Amazing Property

4 BED | 1 BATH | 0 CAR

PRICE:
\$808,000

OPEN FOR INSPECTION:
N/A



Tamara Leskie
0448809458
tamara.leskie@atrealty.com.au
www.atrealtypropertyexperts.com.au