



**SOLD**

## SUPERB FAMILY LIVING WITH MAXIMUM STYLE

Displaying a captivating blend of country charm and modern comfort, this attractive single level home, on a private, leafy allotment delivers instant family appeal. The spacious interior, underscored by warm tones and textured woodwork, boasts two highly desirable living spaces bathed in natural light. A stylish kitchen is appointed with stainless steel appliances including 5 burner gas cooktop and large 90cm oven, while a sizeable fenced yard offers plenty of room for the whole family to enjoy. The main bedroom with built in wardrobe and ensuite is complemented by three further bedrooms and family bathroom. Includes laundry, solar panels, double under cover carport with space for a boat, trailer and extra cars. Conveniently located near schools, shopping centre, medical facilities, cafes and only 10 minutes drive to the heart of the city.

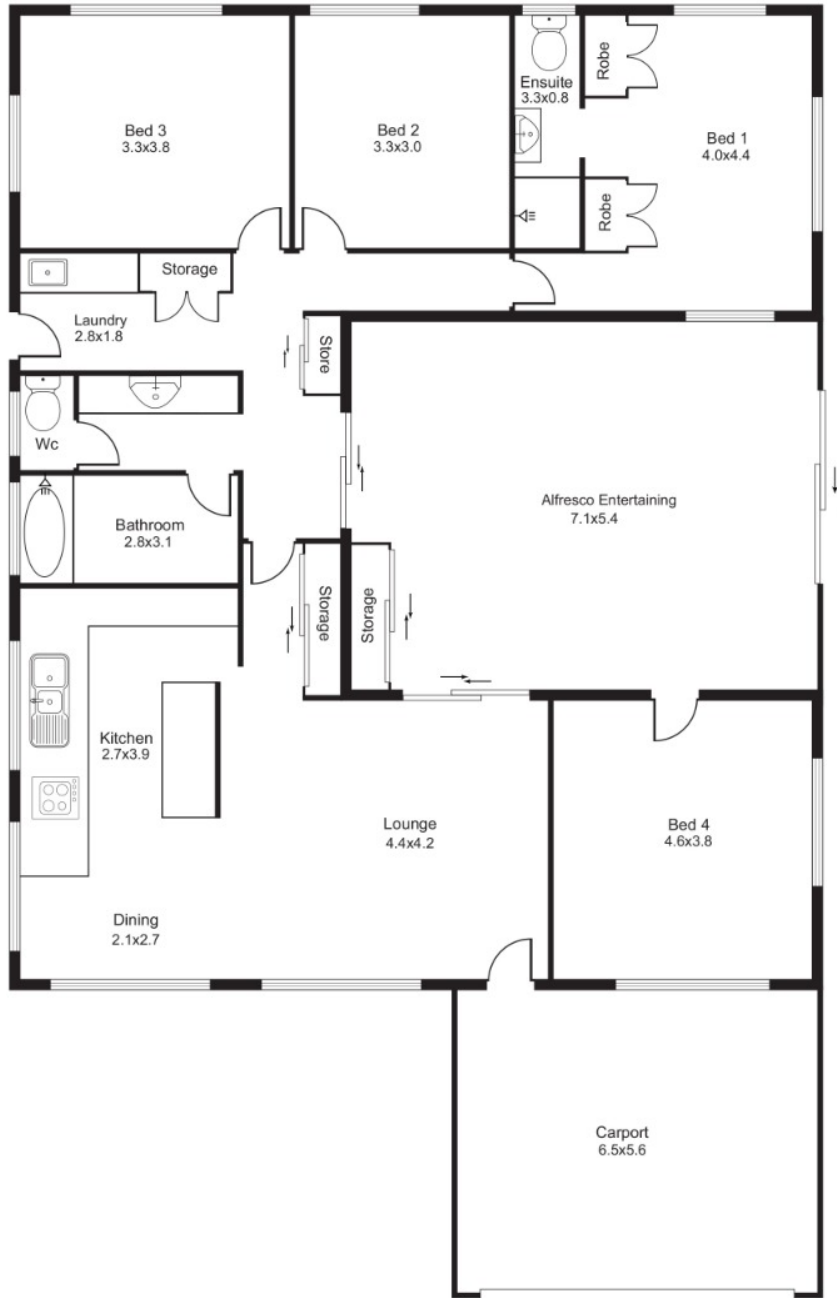
**4 BED | 2 BATH | 2 CAR**

**PRICE:**  
**\$380,000**

**OPEN FOR INSPECTION:**  
**N/A**



**Zoe Wicks**  
**0477114778**  
zoewicks@atrealty.com.au  
[www.atrealty.com.au](http://www.atrealty.com.au)



Illustrative Purposes only Dimensions are approx.  
This drawing is not to scale

Disclaimer: Please note this floor plan is for marketing purposes and is to be used as a guide only. All dimensions are estimates only and may not be exact measurements.