



SOLD

QUALITY BUILT (ROSS MCLOUD) COUNTRY LIFESTYLE ON APROX 2 ACRES

Located on a quiet lane in Grassmere, this quality built (Ross McCloud) modern and spacious family home on approx 2 acres is immaculate in its presentation and the design.

The home itself has been built to a very high standard by a well respected local builder with a modern clean fit-out which is both impressive and functional. Alongside the home's practical features and amenities is a substantial office/study as well as two undercover outdoor living areas and internal access from the double garage.

You'll love the freedom and opportunity of the approximately 2-acre allotment, not to mention the inspiring outlook. Two separate fully fenced paddocks out the back are ideal for a multitude of uses, and if you need room for a big shed you've got it. Cheaper than building new and so much more that can be achieved it really is the best of both worlds.

This beautiful home gives you the best of Country lifestyle, with its convenience to Warrnambool and that peaceful country outlook and space for the whole family to enjoy and love.

3 BED | 2 BATH | 2 CAR

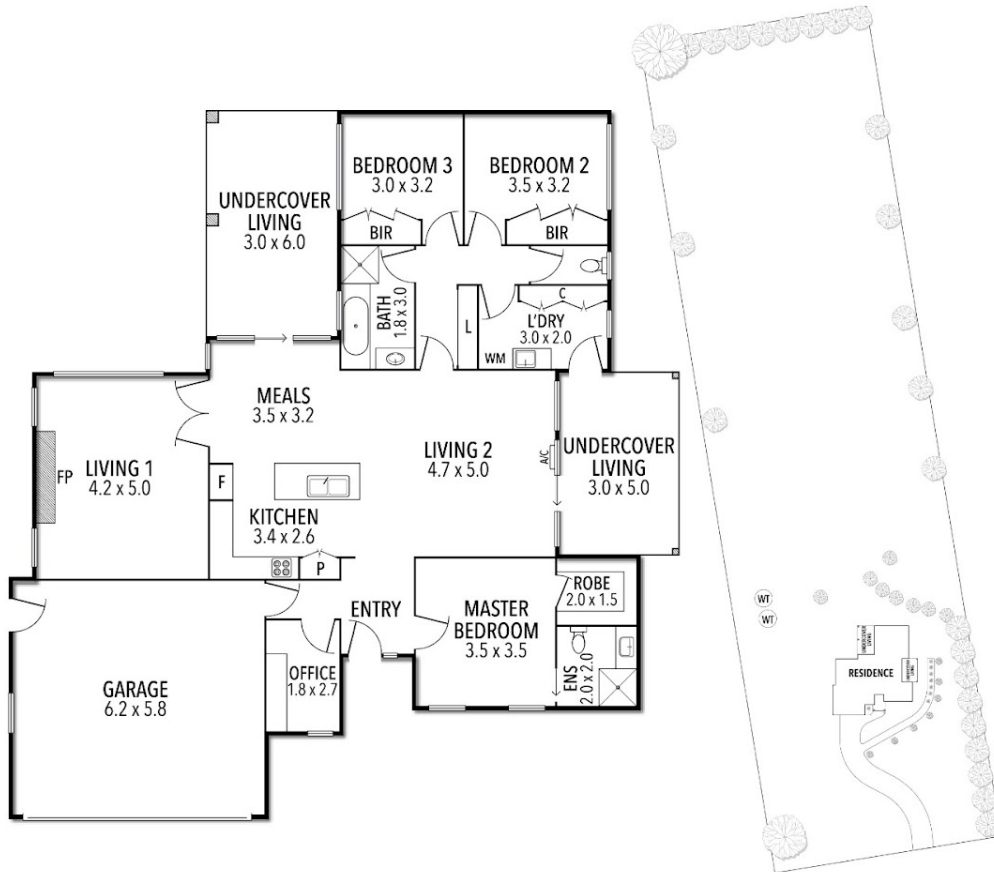
PRICE:
\$500,000

OPEN FOR INSPECTION:
N/A



Mick Molloy
0416547101
michaelmolloy@atrealty.com.au
www.atrealty.com.au

29 CROTHERS LANE, GRASSMERE, VIC



THE ABOVE PLAN IS AN ARTIST'S IMPRESSION ONLY, IT INCLUDES ELEMENTS THAT ARE FOR DISPLAY PURPOSES ONLY AND MAY NOT BE TO SCALE. LANDSCAPING SHOWN IS INDICATIVE ONLY. DIMENSIONS ARE APPROXIMATE.

Disclaimer: Please note this floor plan is for marketing purposes and is to be used as a guide only. All dimensions are estimates only and may not be exact measurements.