



FOR SALE

HUGE HOME WITH GORGEOUS GOLF COURSE VIEWS

Built in 2010 by Plunkett Homes this unique home is set on a magnificent 832sqm block and enjoys stunning views across the rolling greens of Secret Harbour Golf Club. With a massive 285sqm of internal living space it will certainly accommodate the largest of families and if you are looking to work from home or perhaps have a dual living space, then the huge games room with it's own entrance will provide many different options.

Accommodation briefly comprises;

- *Welcoming entrance hall through double doors
- *Enormous lounge room/theatre room, perfect for movie nights & entertaining family & friends
- *Magnificent 'Great Room' provides a fantastic open plan living area with views straight out to the alfresco and golf course beyond
- *Chefs kitchen with an abundance of cabinets, bench space & stainless steel appliances
- *Spacious laundry located off kitchen with access to utility area outside
- *Generous home office/study, potential for 5th bedroom if needed
- *3 further large bedrooms serviced by a spacious family bathroom & separate WC with dual access
- *Additional under main roof huge games room/workshop with 3 phase power and it's own dedicated access to the alfresco and double doors to the side of the property, potential for granny flat/teenage retreat or a fabulous office/salon space for those working from home.

The property also benefits from;

- *Soaring high ceilings, including the double remote garage with shoppers entry
- *Stunning Blackbutt solid timber floors and quality carpets throughout
- *Ducted reverse cycle zoned air-conditioning throughout
- *Huge amount of storage space throughout the home
- *Solar-power panels with 5kW inverter
- *Solar hot water system with gas booster
- *Lawns and gardens fully reticulated from bore
- *3 phase power to the property
- *Total Area: 364sqm
- *Built in 2010 by award winning builder Plunkett Homes
- *Massive 832sqm block backing on to golf course

4 BED | 2 BATH | 2 CAR

PRICE:

MID to HIGH \$600Ks

OPEN FOR INSPECTION:

N/A



Lisa Drylie
0433048512

lisadrylie@atrealty.com.au

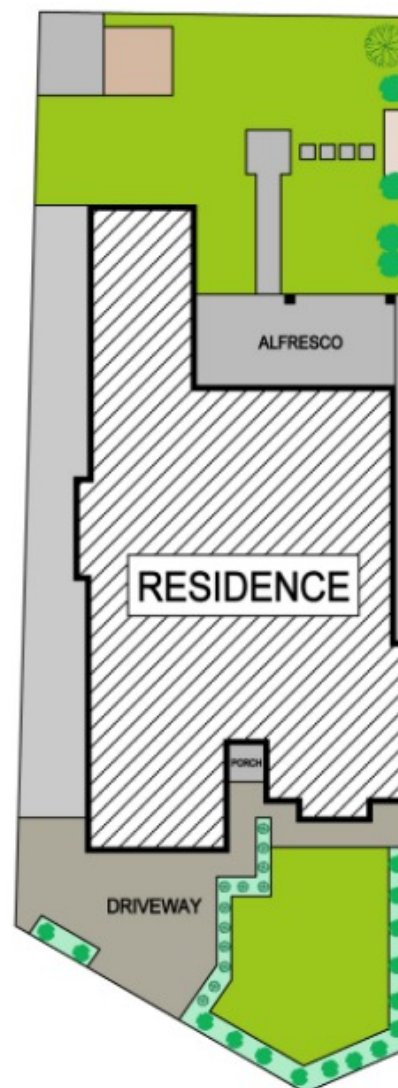
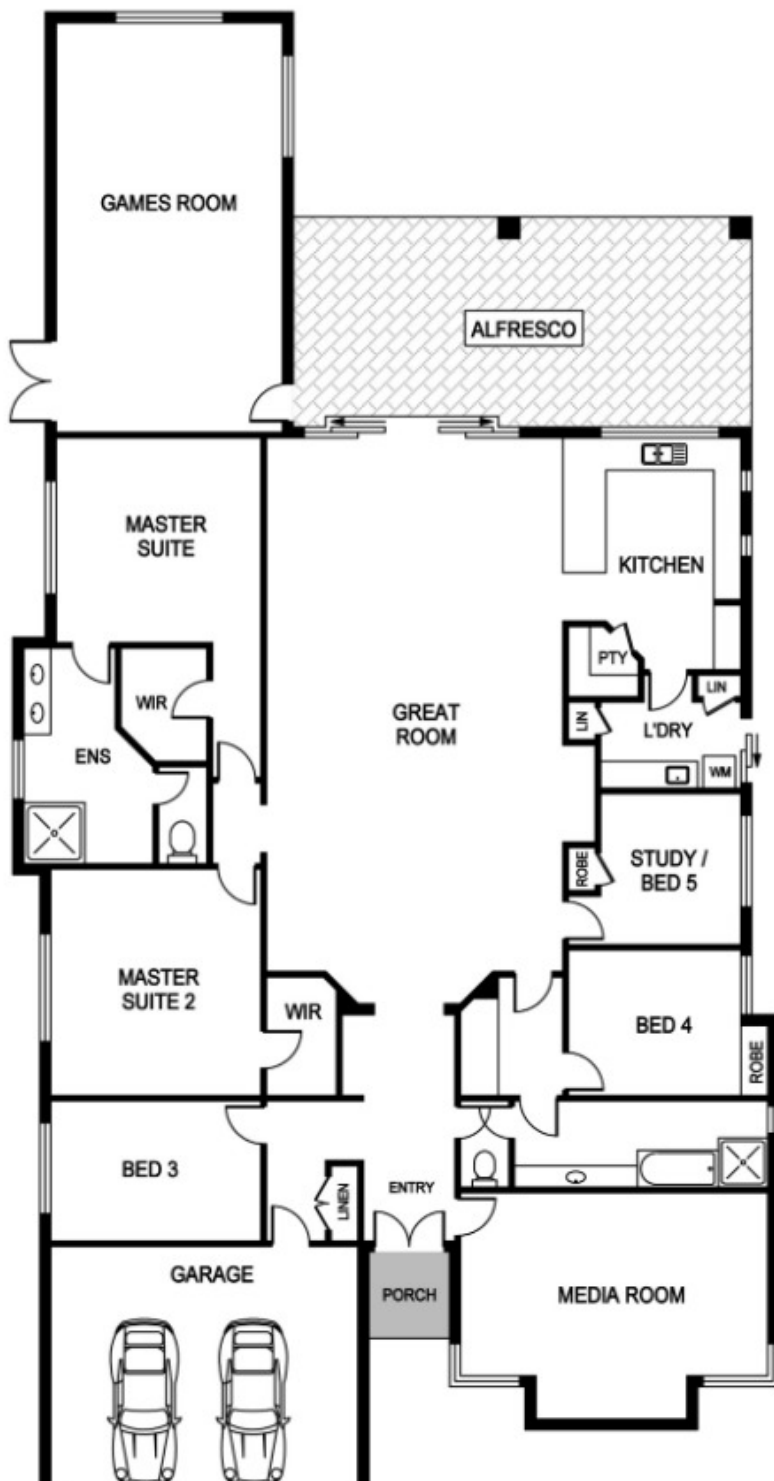
www.lisadrylierealestate.com

12 Barrenjoey Pkwy SECRET HARBOUR



Block Size 832m² | 4 Bedrooms | 2 Bathrooms | 2 Car

Lisa Drylie | 0433 048 512



Disclaimer: Please note this floor plan is for marketing purposes and is to be used as a guide only. All dimensions are estimates only and may not be exact measurements.



REAL ESTATE FLOOR PLANS | houseguru.com.au | © 2019 House Guru Real Estate Photography™

Whilst every attempt has been made to ensure the accuracy of the floor plan contained here, measurements of doors, windows, rooms and any other items are approximate and no responsibility is taken for error, omission or mis-statement. This plan is for illustrative purposes only and should only be used as such by any prospective purchaser. The services systems and appliances shown have not been tested and no guarantee as to their operability or efficiency can be given.

Lisa Drylie
0433048512
lisadrylie@atrealty.com.au
www.lisadrylierealestate.com

