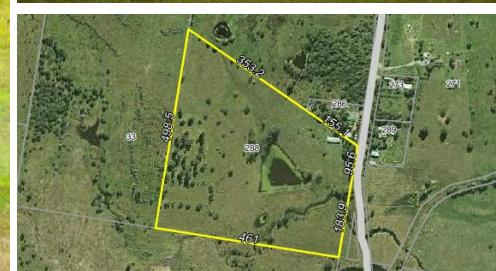
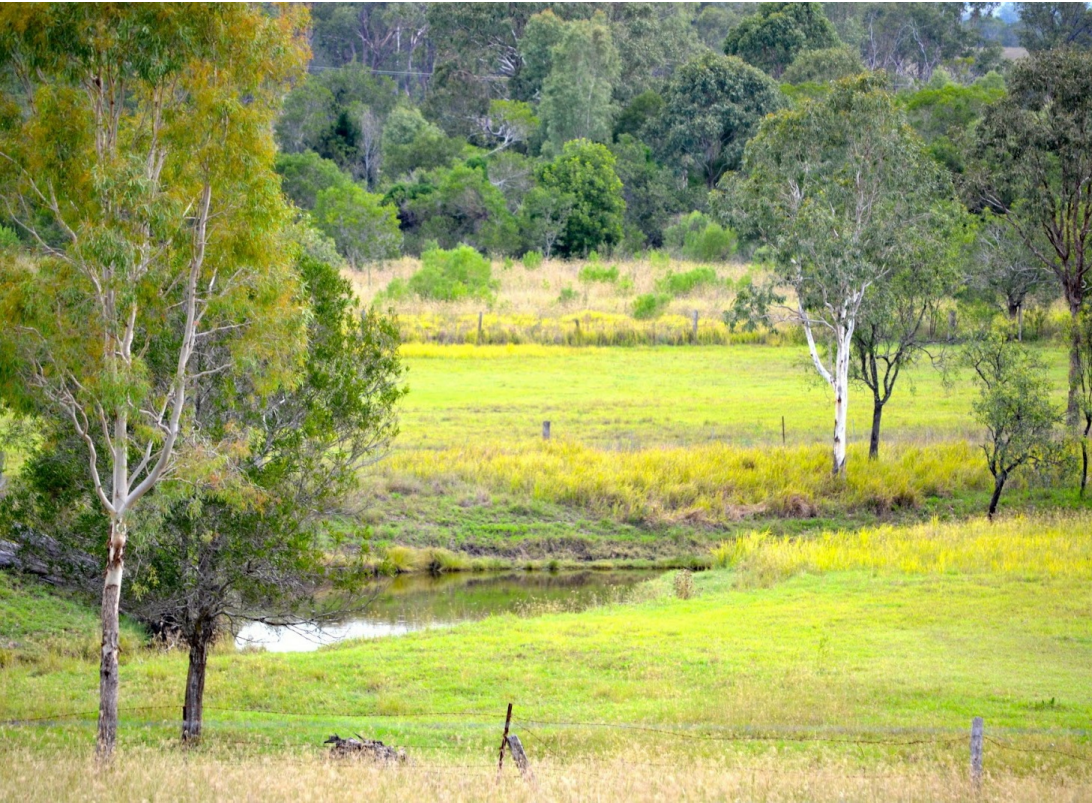


ADDRESS UPON REQUEST



SOLD

HUGE PRICE REDUCTION - " GOLDEN HILL FARM " 44AC 17.8HA - ON GLAMORGAN VALE WATER SCHEME

- * WATER - GLAMORGAN VALE WATER SCHEME ; Plus a Large Dam plus 2 other smaller paddock dams, Meandering Creek with lovely waterholes
- * COUNTRY - Creek Flats for cultivation rising to gently sloping shaded paddocks
- * SHED - approx 100 ft x 35ft High Entry Steel Frame shed, apron of Concrete inside for hay storage, power connected, plus 2 older storage sheds located under the shade of trees.
- * LOCATION - Fernvale is just a short drive, Ipswich is a short 25min Drive
- * "Golden Hill Farm " is ready for the Next Generation of farmers with the potential to grow your own feed , you will not be disappointed !

0 BED | 0 BATH | 0 CAR

PRICE:
\$730,000

OPEN FOR INSPECTION:
N/A



Lyn Sills
0402500825
lynsills@atrealty.com.au
eskrealestate.com.au