



**SOLD**

## A HIDDEN GEM ON CALBOURNE!

The owners said sell!  
PRICE REDUCED AGAIN!

Tucked away on Calbourne way, This beautiful home will surely impress! Woodvale Secondary school catchment zone. A short stroll to Moolanda park, Halidon Primary school, lake Goollelal, Montessori school, Goollelal Primary school, Galaxy drive in and public transport just to name a few... Easy access to Whitfords Ave, giving you access to Woodvale shopping district, freeway access and Kingsway shopping centre.

Not just your standard 4x2, there are plenty of surprises including:

- Large Fiberglass swimming pool recently refurbished
- 4 big sized bedrooms with built in robes, ceiling fans and air con.
- 2 entertaining area's
- Newly renovated bathrooms
- Freshly painted throughout
- New carpets to master bedroom
- Big backyard
- Security alarm
- 5KW solar panels to roof
- Split level living/dining with a real homely feel.
- Storage loft
- Double enclosed carport with additional off street parking for your caravan/boat/car.
- 2 x garden sheds

Many more extra's in this home, come on in and check it out for yourself. It will surely impress. The open plan living with raked ceilings (exposed beams) gives off a very warm and inviting feel. Perfect for entertaining, with 2 big undercover areas, large swimming pool, yard for the kids & side access for extra vehicles.

This home is full of character and wont last long. Be quick or miss out!  
Contact Dan now to secure a place in the home open, or click this contact button provided to arrange a viewing.

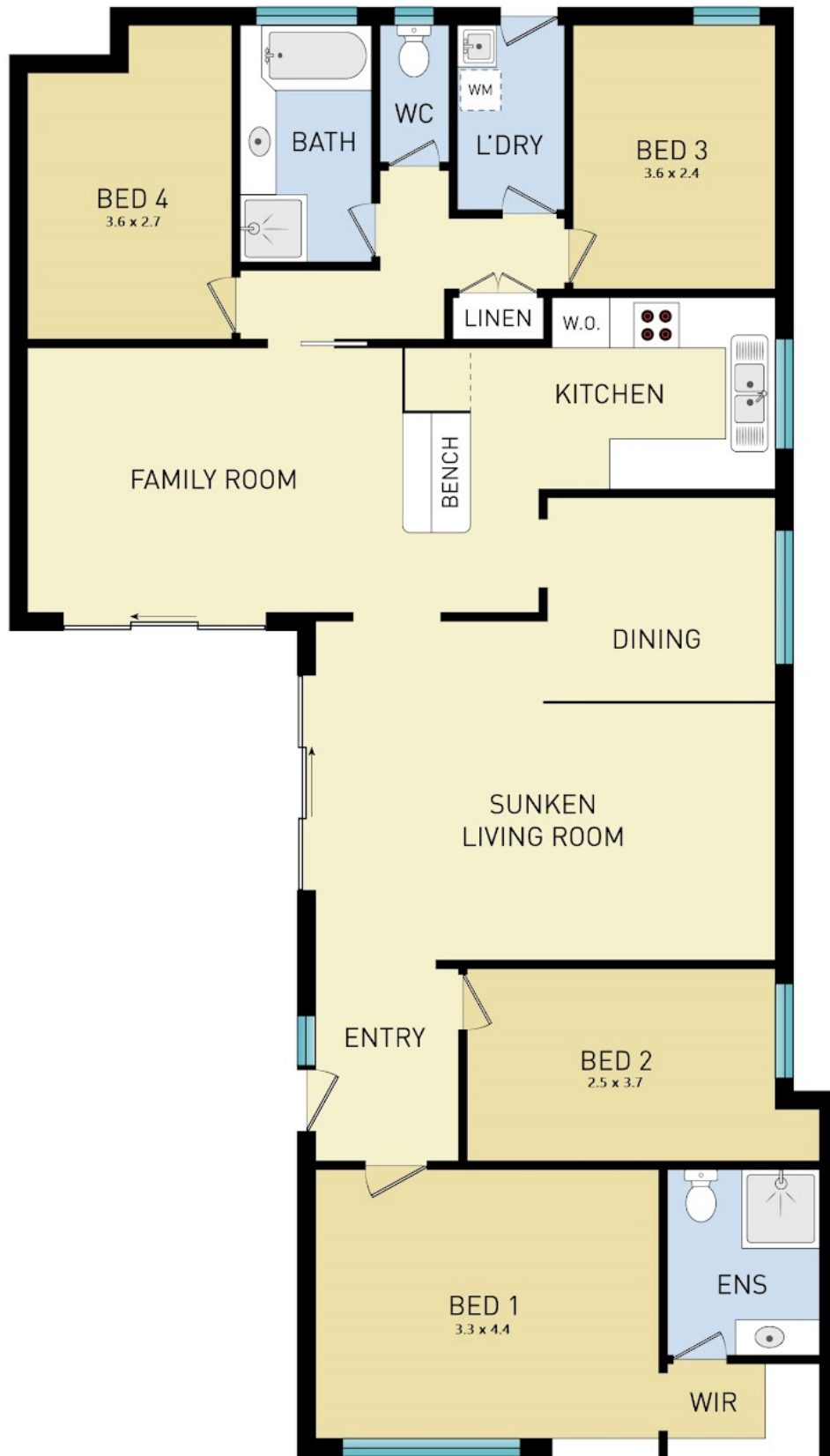
4 BED | 2 BATH | 2 CAR

PRICE:  
\$5,550,000

OPEN FOR INSPECTION:  
N/A



**Dan Killick**  
**0449797363**  
dank@atrealty.com.au  
[www.atrealty.com.au](http://www.atrealty.com.au)



Disclaimer: Please note this floor plan is for marketing purposes and is to be used as a guide only. All dimensions are estimates only and may not be exact measurements.