



FOR SALE

CHIC ON CHEVAL – 6 BEDROOM DESIGNER HOME

Nestled in a quiet enclave of prestige properties this stunning designer home delivers big on class, style and size.

Finished to perfection with 6 bedrooms, 3 bathrooms and multi-functional living spaces, this substantial home offers a luxurious lifestyle for the extended family or dual living situation.

Embracing pool and garden views the magnificent high spec statement kitchen features an impressive island bench – with 30mm granite counter top and waterfall edges. Gas cooking and quality European stainless steel appliances complete this entertainer's masterpiece.

Flowing from the kitchen and family areas is the supersized undercover alfresco area with a 3 metre high insulated ceiling complete with fans, and overlooking the large back yard and pool area.

The ground floor luxury master bedroom incorporates an exquisite bespoke ensuite bathroom designed with luxury and function in mind. Stylish double vanities, a large waterfall shower, substantial walk in robe and pool views complete this sumptuous master suite.

There are an additional 2 bedrooms on ground floor, and 3 bedrooms upstairs – all generously proportioned and all including built in robes and ducted air-conditioning.

The large multi-functional flexible living areas wrap around the stunning pool area, and can be configured to a multitude of living arrangements, with a workspace or 2nd dining adjacent to the main living and a large family/dining room next to the kitchen.

The laundry caters perfectly for the busy needs of a large family with a long granite bench, loads of storage and direct access to the outdoor drying area.

Located in the highly sought after Benowa School catchment, Benowa Waters is a prestigious central Gold Coast suburb, with close proximity to schools, shopping centres, Pindara hospital, the Gold Coast Turf Club and Beaches.

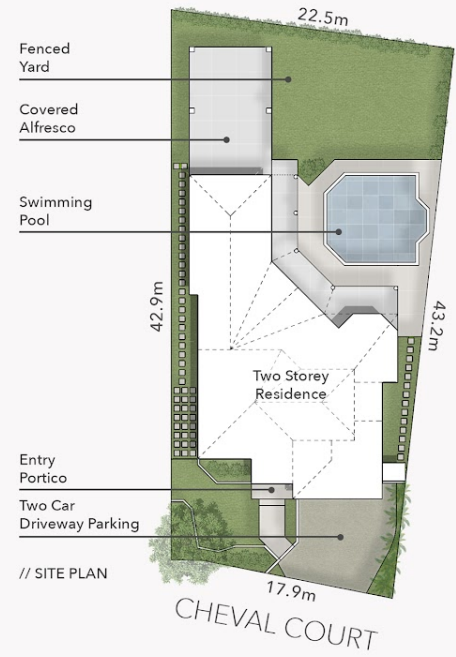
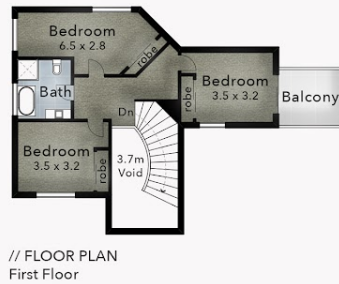
6 BED | 3 BATH | 0 CAR

**PRICE:
UNDER CONTRACT**

**OPEN FOR INSPECTION:
N/A**



Scott Euler
0431174010
scott.nicola@atrealty.com.au



9 Cheval Court
BENOWA WATERS
Block Size 854m²

FLOOR AREA SIZES
Internal 359m²
Alfresco, Patio & Portico 114m²
Total 473m² or 51 Squares

PROPERTY DETAILS
- 6 Bed
- 3 Bath
- 2 Car

SCOTT EULER & NICOLA BUCHANAN **@realty**
0407 750 620 | 0431 174 010

puredesign
CONCEPTS

PLANS FOR
PURPOSE

The overall presentation style, layout, imagery, fonts, background, colours and terminology are subject to strict copyright of Pure Design Concepts. No ownership is taken for building design. All measurements are approximate & individuals should rely on their own information. Find out more at puredesignconcepts.com.au

Disclaimer: Please note this floor plan is for marketing purposes and is to be used as a guide only. All dimensions are estimates only and may not be exact measurements.

Scott Euler
0431174010
scott.nicola@atrealty.com.au

@realty