



**SOLD**

## INVESTORS/ FAMILIES!

Contact Roshiba Christina for a private inspection 1:1 for anyday.

0422322550

Due to Covid19 we have implemented strict hygiene policies to be followed by everyone. Please contact agent.

Private inspection times are available for Saturday/Sunday /weekdays -one to one. If you have traveled interstate or overseas in the last few weeks please speak to the agent. All necessary safety tools will be available at inspections for everyone's safety. You are encouraged to bring your own.

4 BED | 2 BATH | 2+ CAR | 630SQM LAND

BEAUTIFUL HOUSE WITH SO MUCH LAND IN THE HEART OF MAWSONLAKES, SA!  
POSSIBILITIES OF 2-3 DWELLINGS (STCC) 2 STOREY.

An investment or a lifestyle in the prestigious suburb of Mawson Lakes you can't go wrong. Spacious house with so much front and back yard has all you need for comfortable living on a very wide street. Close to top class restaurants and cafes, quality primary and secondary schools, UNISA, Mawson Lakes Technology park, public transport, train to the Adelaide CBD, Interchange, walking trails, Lakes and parks all around and recreational reserves. Only 13.5 km to Adelaide CBD.

So many developments happening all around you are set to achieve your investment goal.

General Features:

- 4 Spacious bedrooms Master with en-suite and a walk in robe, 3 other with built in wardrobes/mirror
- 2 livings
- 2 bathrooms
- Open plan kitchen with spacious dining area, dishwasher, pantry
- Kitchen overlooks both dining and family room
- Big Laundry
- Sit out area
- Ducted Reverse cycle with Zone Control
- Outdoor Entertaining area
- Tiled/carpeted flooring
- Torrens Title

4 BED | 2 BATH | 3 CAR

PRICE:

\$690,000

OPEN FOR INSPECTION:

N/A



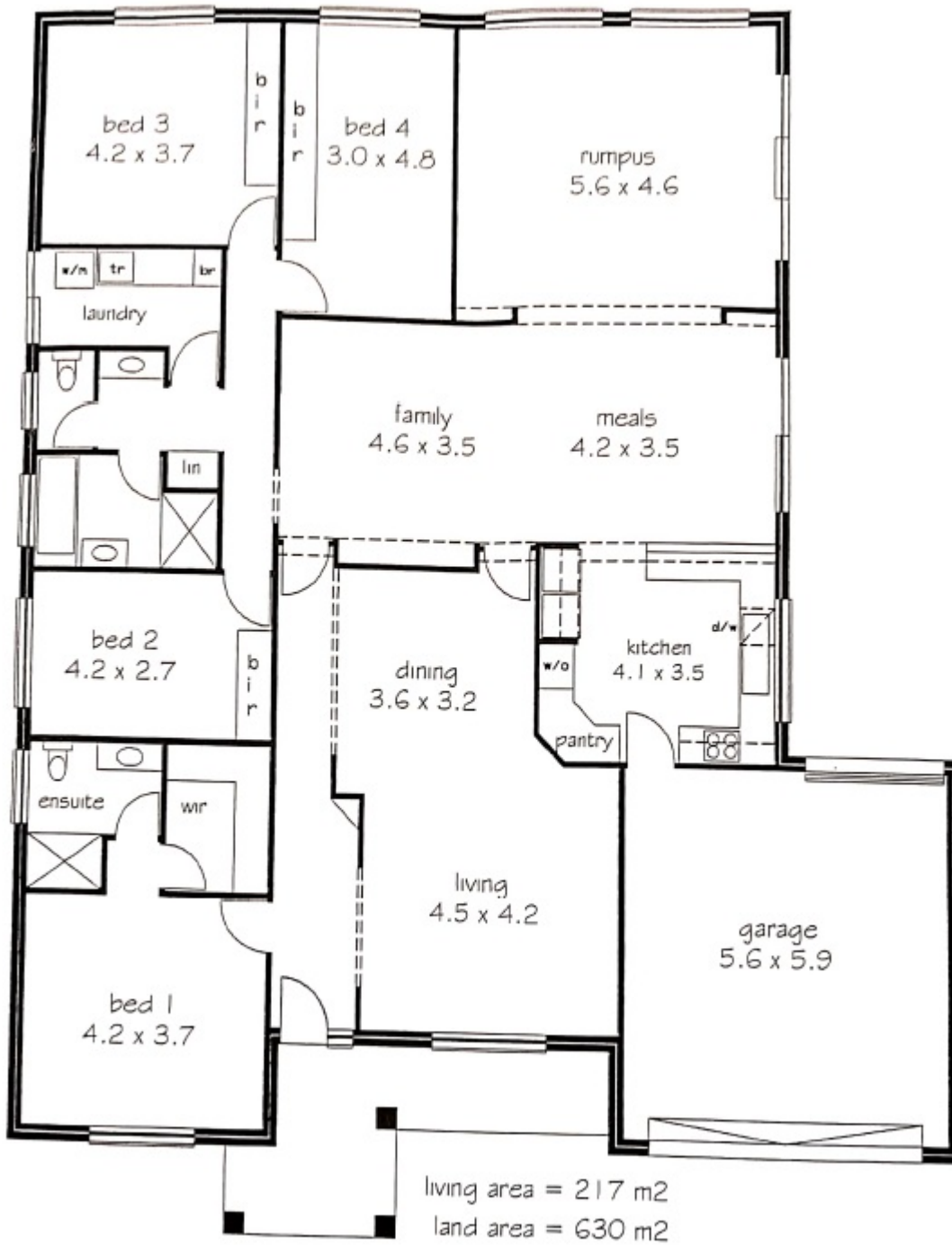
**Roshiba Christina de la Ruviere**

**0422322550**

[roshiba@atrealty.com.au](mailto:roshiba@atrealty.com.au)

[www.atrealty.com.au](http://www.atrealty.com.au)

RLA: 269823



Disclaimer: Please note this floor plan is for marketing purposes and is to be used as a guide only. All dimensions are estimates only and may not be exact measurements.