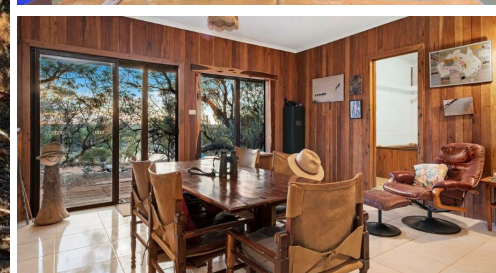
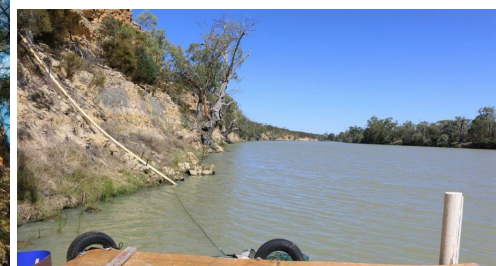


40 NIKALAPKO BOUNDARY ROAD, TAYLORVILLE, SA, 5330



SOLD

ELEVATED OFFICE/STUDIO OVERLOOKING MURRAY RIVER

Outback guide and Author "Rex Ellis" Riverfront bush Hideaway for sale!
Nestled amongst Eleven acres of old growth Mallee on cliffs with access to river and overlooking a remote part of the River Murray is this amazing secluded setting.

- Rammed Earth and Timber home with adjoining billiard/games room.
- Upstairs office/study overlooking the river.
- Timber stairs to floating pontoon.
- 50' x 30' storage shed with built in shelving.
- 36' x 36' open front implement shed.
- Old saddle shed and swag house overlooking river.
- Stand-alone Solar Power. (recently Updated)
- 15,000 Gallon of rainwater storage.

There is access for boats (under 2 km by river) with a floating pontoon to moor against and to fish from.

Private inspection only by prior arrangement.
RLA 269823

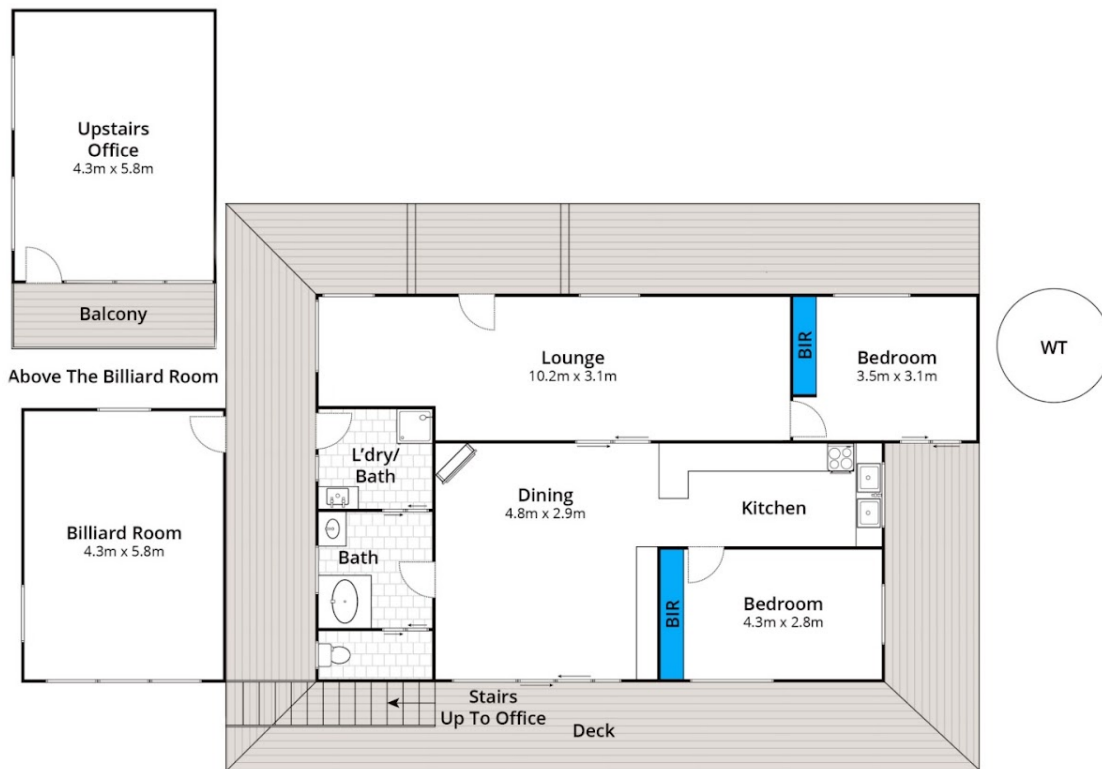
3 BED | 1 BATH | 7 CAR

PRICE:
\$535,000

OPEN FOR INSPECTION:
N/A



Cary Hocking
0488414460
cary@atrealty.com.au
waikerierealestateforsale
RLA: 269823



Approx House Area 108m²

Whilst bwrm.com.au has made every attempt to ensure the accuracy of the floor plan contained here, measurements are approximate and no responsibility is taken for any error, omission, or mis-statement. This plan is for illustrative purposes only.

40 Nikalapko Boundry Road



Disclaimer: Please note this floor plan is for marketing purposes and is to be used as a guide only. All dimensions are estimates only and may not be exact measurements.

Cary Hocking
0488414460
 cary@atrealty.com.au
waikerierealestateforsale

