

FOR SALE

GWYNNEVILLE IS POPULAR, CONVENIENT & EXTREMELY AFFORDABLE

A great opportunity for a multitude of buyers has just arisen in the heart of the ever popular Gwynneville. Centrally located with free public transport nearby this will suit Uni Students, Retirees, Couples, Young Professionals or those looking for a rental property.

- @ Level, sunny, north facing, ground floor unit
- @ Polished floor boards throughout and fully repainted
- @ Modern kitchen, large main bedroom, BIR and own verandah
- @ Allocated Off Street parking in a small complex of only eight
- @ Thriving Gwynneville Village, Bowling Club, Pool, Schools are all nearby
- @ Wollongong's CBD & University are both only a few minutes drive
- @ Free Shuttle bus to access the CBD, beaches, eateries and more
- @ Appealing position for accessibility to local train station or motorway

Gwynneville's ever-popular lifestyle benefits make for a wonderfully diverse buying opportunity. Call Glenn right now!

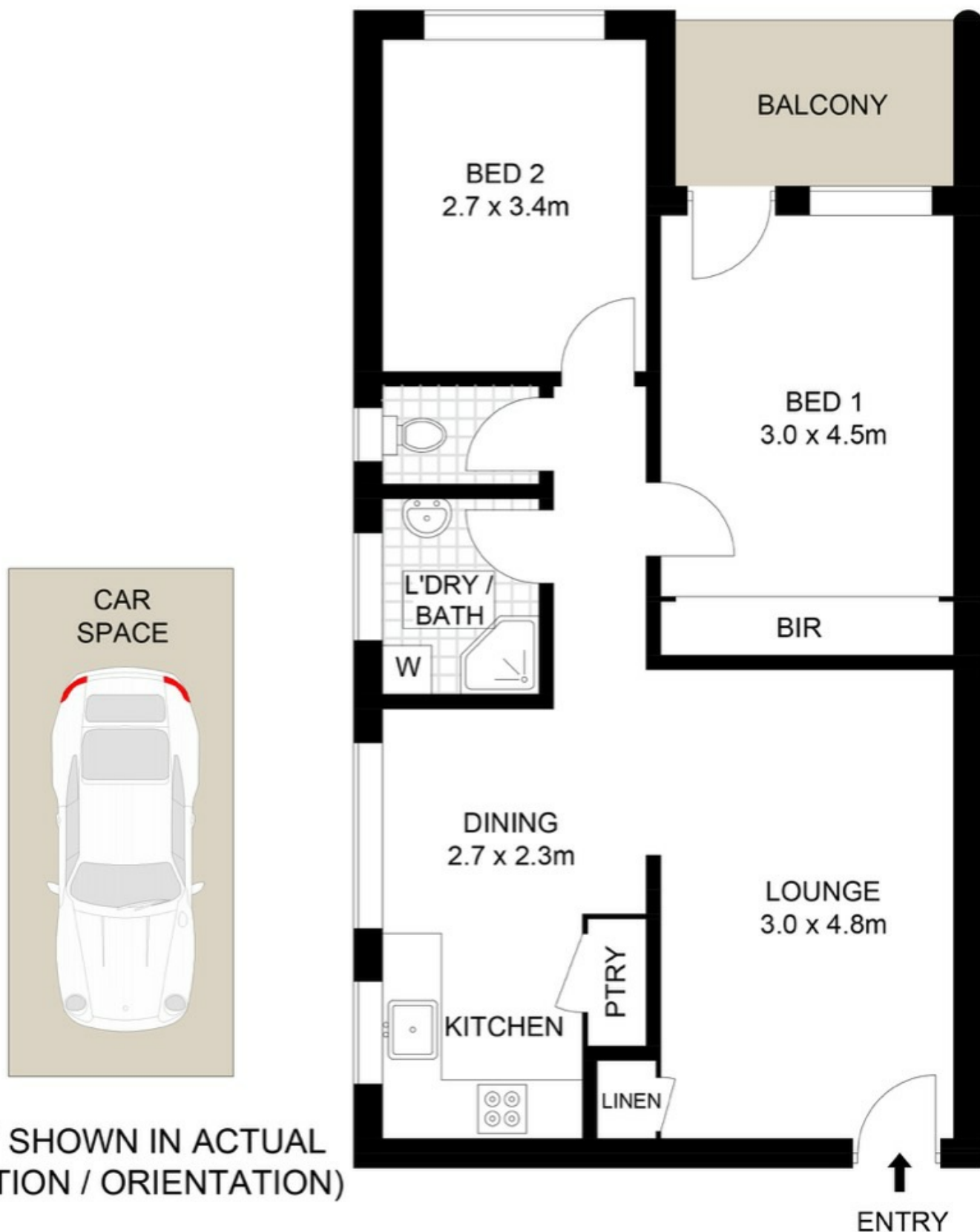
2 BED | 1 BATH | 1 CAR

PRICE:
\$415,000

OPEN FOR INSPECTION:
N/A



Glenn Wright
0408120866
glenn.wright@atrealty.com.au
Wright Way Realty



Disclaimer: Please note this floor plan is for marketing purposes and is to be used as a guide only. All dimensions are estimates only and may not be exact measurements.

Shown in meters. Measurements only. Dimensions are approximate. All measurements are taken from the centre of the room. However, we cannot guarantee its accuracy and interested persons should rely on their own enquiries.

1/13 Catherine Street, Gwynneville

Glenn Wright
0408120866

glenn.wright@arealty.com.au

Wright Way Realty

@arealty