



FOR SALE

OVER 130 ACRES IN UNDULATING ROCKSBERG FOR SALE - WHAT AN AMAZING PROPERTY! 6 TITLES & WILL SEPARATE!

Rocksberg is an as yet undiscovered part of the northern corridor, yet it is so close to amenities.

You have a chance to purchase a property on 136 acres (approx.) in the beautiful Rocksberg valley with 6 titles.

On one of the title blocks there is a huge Federation Queenslander (circa 1935). This highset wood home still holds its traditional features throughout its 4 bedrooms. Its tall ceilings, polished wooden floors and sash windows (with modern additional of fly screens) help maintain the traditional feel, yet there are also modern amenities.

All bedrooms are large, with the master being both the largest, but also boasting a window seat in its bay window as well as a large ensuite. It also contains not just a walk-in robe, but a full room to accommodate your clothes.

The living areas are expansive with the main area having French doors leading out to the verandah. The dining adjoins the huge kitchen that has room for two fridges, large walk-in pantry and a beautiful Homestead Cooker that will be the centrepiece and joy of your time in the kitchen.

The homestead also offers an additional storage room or office as well as a second bathroom. The large laundry offers you more storage away from the living areas.

On this title, there are also cattle yards and a huge shed that would be great for stables, saddles, machinery or a workshop.

Throughout this large acreage property, Eliza creek meanders and there are also three dams. With these natural water sources and being fully fenced, this land can easily hold 50 head of cattle all year round.

With magnificent views from the showcasing the Glasshouse Mountains and Mount Mee the other direction, as well as spectacular Moreton Bay Figs throughout the property – this is a show

4 BED | 2 BATH | 6 CAR

PRICE:

\$3,300,000 or will sell separately see in text for

OPEN FOR INSPECTION:

N/A

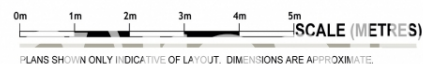
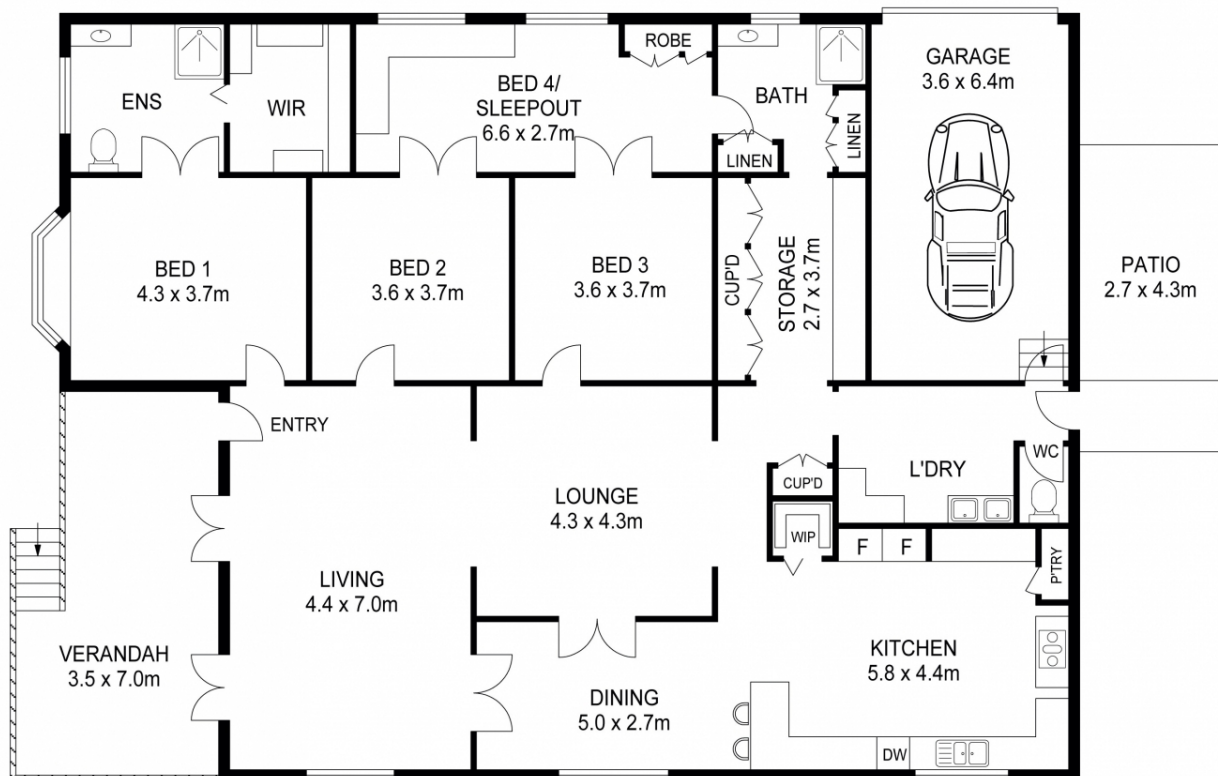


Gail Bernardin

0418645506

gail@atrealty.com.au

www.gailbernardin.com.au



Disclaimer: Please note this floor plan is for marketing purposes and is to be used as a guide only. All dimensions are estimates only and may not be exact measurements.