



SOLD

LOOKING FOR MORE LISTINGS IN GREENBANK
_ SHARON SMYTHE 0412 195500

Experience the lifestyle that this apartment offers, with its large 2 bedroom 2 bathroom and RIVERFRONT position. Overlooking gorgeous uninterrupted views of the Tweed River - simply sit back and watch the boats sail by.

Upon entering this large first-floor apartment facing the Tweed River you will be consumed by the tranquility of the water views.

This beautiful 2 bedroom with 2 bathroom is extremely large and has so much to offer. From your lounge or balcony, you can sit and watch the sunrise or the fishing boats coming back from their day out. If you like to walk you can enjoy the scenic views along the river. Pet-friendly with body corp approval.

KEY FEATURES:

- Master bedroom with ensuite
- Second bedroom with entry to the main bathroom
- Single remote control lock up garage
- Breathtaking views of the Tweed River to the ocean

ADDITIONAL FEATURES:

DETAILS:

- Rates \$2643.75per annum
- Body Corp \$55.26 per week(includes water usage and building insurance)
- Market Rent \$550 per week permanent
- Holiday Let - \$530 off-peak weekly \$790 holiday times and \$1020 Christmas per week

LOCATION:

Greenbank is highly sought after and this property occupies a sensational Easterly position right on the foreshore of the Tweed River.

2 BED | 2 BATH | 1 CAR

PRICE:
\$605,000

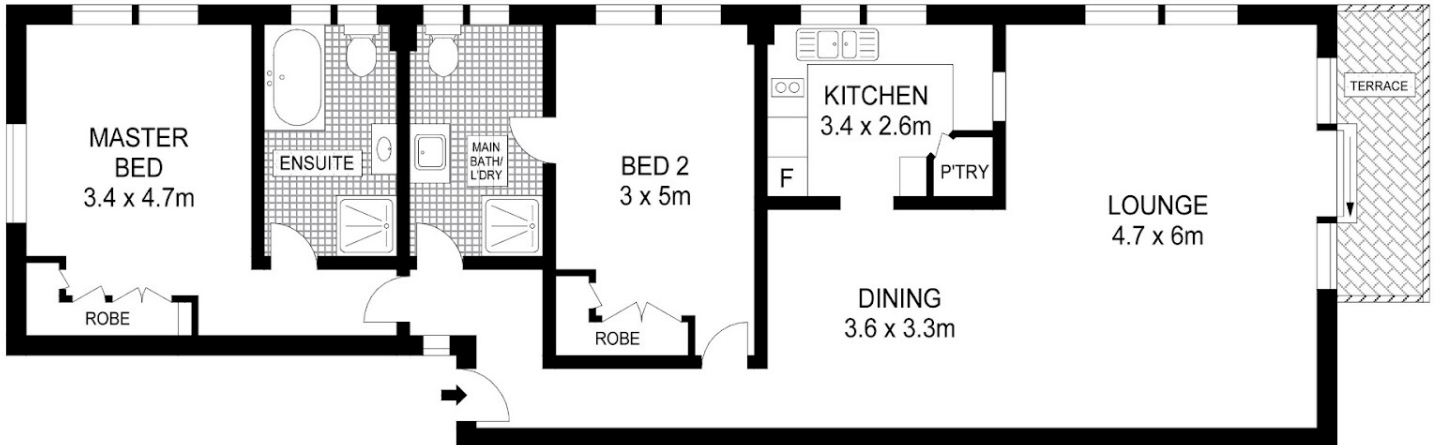
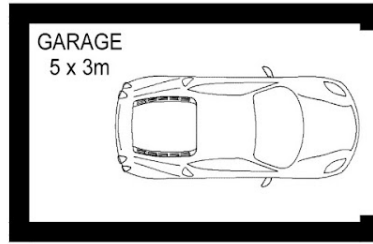
OPEN FOR INSPECTION:
N/A



Sharon Smythe
0412195500
sharonsmythe@atrealty.com.au
www.atrealty.com.au

Unit 4 - 18 Endeavour Parade, Tweed Heads

Total Approximate Floor Area 129 sqm



Whilst every attempt has been made to ensure the accuracy of the floor plan. Measurements of doors, windows rooms and any other items are approximate and no responsibility is taken for any error, omission or misstatement. This plan is for illustrative purposes only and should be used as such by any prospective purchaser.

Disclaimer: Please note this floor plan is for marketing purposes and is to be used as a guide only. All dimensions are estimates only and may not be exact measurements.