



FOR SALE

NEW AND FANTASTIC ON GRANGE

This fabulous brand new home features a stylish kitchen with generous stone bench space, soft close drawers, stainless appliances and encompassed in a large open plan living space.

The fitout of this home incorporates 4 large bedrooms, 2 generous bathrooms with stone benchtops, walk in robe to master bedroom, more than adequate storage, remote double garage with internal access with roller door access to the rear yard and security screens to windows and rear patio door.

This new home would ideally appeal to first home buyers looking to get into the market, investors or empty nesters looking to downsize. The generous space and comfortable feel of your new home is guaranteed not to disappoint.

Conveniently located
Less than 100mtrs to the new Coles at Silkstone, café and bakery
100mtrs to bus
800m to Silkstone State School
2.1km to Booval Rail Station
3.7km to Riverlink or Ipswich CBD

For first home buyers, the purchase of this home may be subject to a substantial concession on Stamp Duty plus the \$15,000 Qld First Home Owners' Grant for those who qualify.

We look forward to meeting you at one of our open homes.

4 BED | 2 BATH | 2 CAR

PRICE:

New home \$395,000

OPEN FOR INSPECTION:

N/A

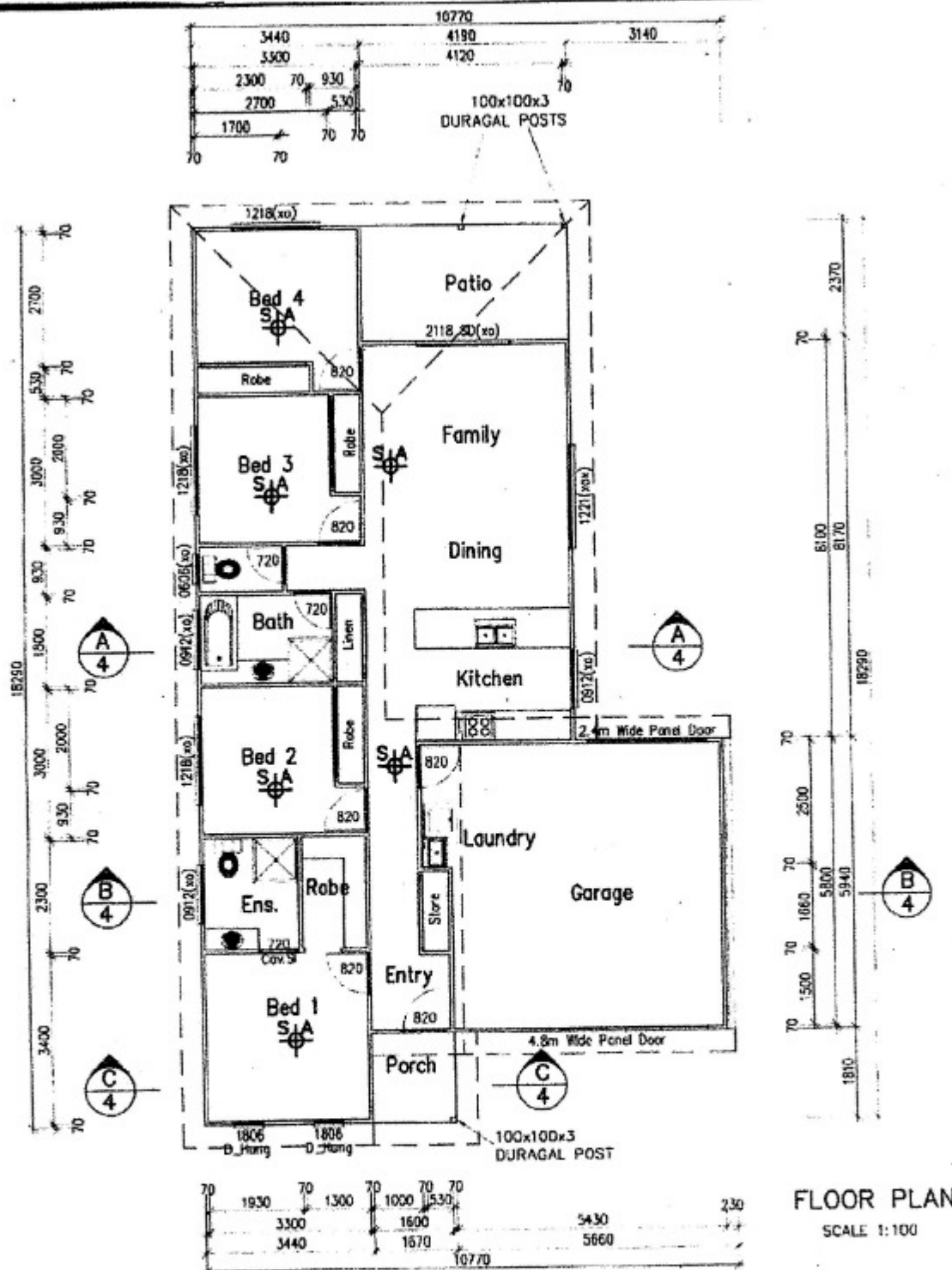


Vicki Cunningham

0466895574

cunningham@atrealty.com.au

www.atrealty.com.au



FLOOR PLAN
SCALE 1:100

Disclaimer: Please note this floor plan is for marketing purposes and is to be used as a guide only. All dimensions are estimates only and may not be exact measurements.

