



SOLD

BEACH FRONT RETIREMENT LIVING

Ian & Janelle Pye are your local professional agents representing this magnificent property. This is Retirement Living with NO Exit fees on Termination, and if that is not enough, you keep all Capital Gains as well.

This modern brick 2 bedroom freehold unit is nestled amongst the superbly manicured gardens of the retirement resort. It is magnificently positioned right on the water front esplanade of Tin Can Bay.

The kitchen and lounge areas look out over the gardens with a backdrop of such an intriguing tree line. A very generous bathroom with double vanity basins and large shower adds a wonderful quality to the finishes throughout. The light colour palette and the strategically placed windows allows full views across the gardens as well as the light filled interior of the residence. The bedrooms are quite large and each have built-in-robos, fans and air conditioning. The unit has zoned, ducted air-conditioning and fans throughout. An internal laundry opens out to an enclosed outdoor courtyard. A single lockup garage with controller door provides secure parking for your vehicle and some storage space.

A back-to-grid solar electricity system ensures there are no surprises with the electricity account. This resort is pet friendly so you can continue to enjoy the company of your family pet.

Unit 44's Features:

- North Facing 2 Bedroom Brick Unit
- Each with Built-in-Robes, Fans, Air-Conditioning
- Well Appointed Kitchen
- Large Living Area
- Bathroom with Double Vanity & Shower
- Ducted Air-Conditioning throughout
- Single Lockup Garage with Controller Door
- Solar Electricity System
- Manicured Gardens
- Beach Front Location with Walking Path
- 187 Sq Mtr
- Pet Friendly

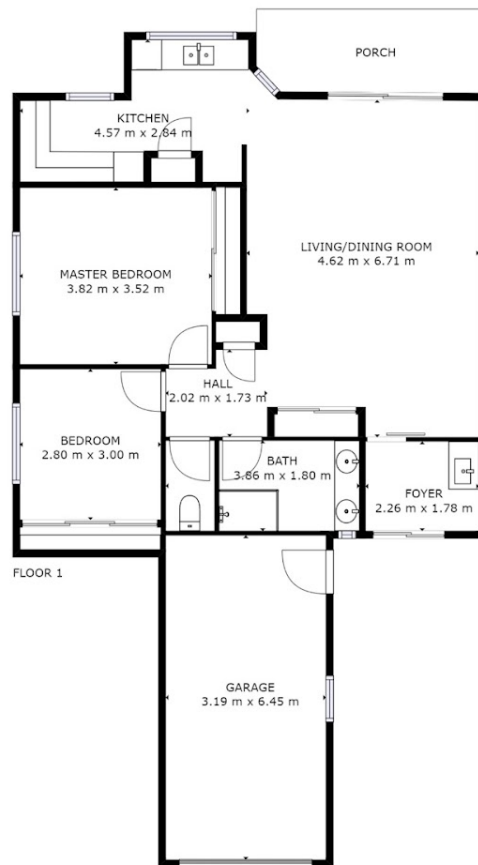
2 BED | 1 BATH | 1 CAR

PRICE:
\$220,000

OPEN FOR INSPECTION:
N/A



Ian and Janelle Pye
0437778111
ianpye@atrealty.com.au
www.atrealty.com.au



GROSS INTERNAL AREA
 FLOOR 1: 82 m², EXCLUDED AREAS:
 GARAGE: 21 m²
 TOTAL: 82 m²
 SIZES AND DIMENSIONS ARE APPROXIMATE, ACTUAL MAY VARY.



Disclaimer: Please note this floor plan is for marketing purposes and is to be used as a guide only. All dimensions are estimates only and may not be exact measurements.