



FOR SALE

SURPLUS TO DEVELOPERS NEEDS. MASSIVE REDUCTION.

Stage 5 Emerald Beach Estate land all sold and Stage 6 about to be released.

Developer says 'reduce and sell this one'

Such a great find in such a perfect location.

Possible rent is \$445 PW.

Only 12 months old.

Much bigger than you expect.

Flat walk or bike ride to the beach, its shops and restaurant

Eastside of the highway. Beachside as locals refer to it.

Located in the new beach estate at Emerald Beach this 3 bedroom quality home has been constructed by Sapphire Homes.

The builder "Sapphire Homes" prides itself on exceptional workmanship with an emphasis on the highest standards & quality. Check out some of their many houses in the North Sapphire Beach Estate including the actual Beachstone Café.

Designed for modern-day living the home enjoys an open floor plan creating a free flow effect throughout.

This house will have good sized living areas. A spacious, well-appointed, modern kitchen with great bench space & storage.

The master bedroom has the required ensuite & more than adequate wardrobe.

Sliding glass doors in the living area flow out to an outside Alfresco area to enjoy outdoor living.

A remote oversized single garage and a low maintenance yard perfectly suited to downsizers or for investors.

The package created offers an easy, low maintenance lifestyle.

Note this Estate now has an approved modern childcare facility & extensive playground. How convenient is that?

This house is sure to impress.

What a golden opportunity to retire with peace of mind, invest with confidence or enjoy the lifestyle this new home offers in this idyllic sought after location of Emerald Beach.

Contact Mark Killian @REALTY 0427027372 for an inspection or any questions.

3 BED | 2 BATH | 1 CAR

PRICE:

\$475,000

OPEN FOR INSPECTION:

N/A

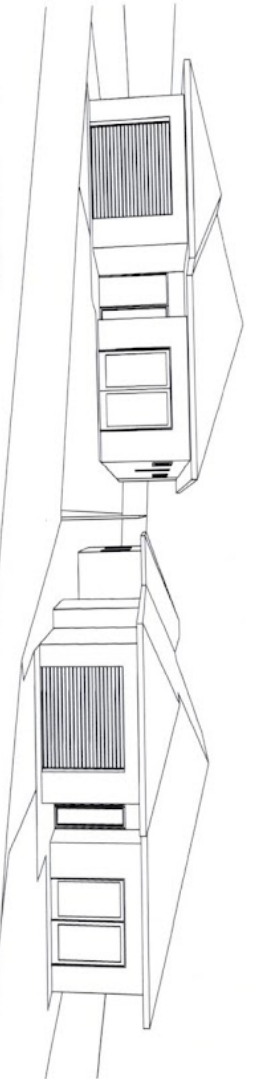


Mark Killian

0427027372

killian@atrealty.com.au

Killian Property



Disclaimer: Please note this floor plan is for marketing purposes and is to be used as a guide only. All dimensions are estimates only and may not be exact measurements.