



**SOLD**

## GREAT INVESTMENT/GREAT LIFESTYLE

Love the beaches and the hills with all amenities at your fingertips, don't miss this house!

Very neat and tidy home well maintained in a friendly neighbourhood, minutes to beaches, shops, transport, train station and the beautiful McLaren vale hills with wineries

- 2 spacious bedrooms (2 bedrooms-carpet, rest is tiled)
- Neat and tidy kitchen with Gas
- Open plan lounge/dining room
- R/C Aircon
- Filled with natural light
- Foxtel
- Beautifully maintained back yard great for entertainment/children/pet
- Low maintenance
- 3 minutes to Woodcroft shopping, food land, petrol station, Aldi, School, 2 minutes to bus stop
- 10 minutes to Christies beach/Onkaparinga valley hills/ McLaren Vale wineries
- 10 minutes to O'Sullivan beach/Boat ramp/Jetty at Port Noarlunga/Noarlunga shopping centre
- Big parks and playground, walking trail
- 30 minutes to the Adelaide CBD
- Close to all amenities
- So much more, worth the investment

Presenting getting a rental income of \$270 per week.

With interest rates as low as they are this investment would be cash flow positive\*, however you would need to seek financial advice on the same.

Land size: 453sqm  
Frontage: 14.75m  
Building: 92 sqm  
Year built: 1988  
Council: City of Onkaparinga

For inspections contact:  
Roshiba Christina de la Ruwiere  
0422322550/0432300011

2 BED | 1 BATH | 0 CAR

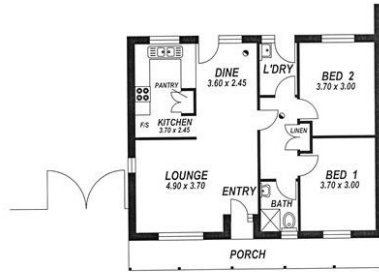
PRICE:  
\$215,000

OPEN FOR INSPECTION:  
N/A



**Roshiba Christina de la Ruwiere**  
**0422322550**  
roshiba@atrealty.com.au  
[www.atrealty.com.au](http://www.atrealty.com.au)  
RLA: 269823

23 WAVERLEY WAY MORPHETT VALE



This drawing is for illustrative purposes only. The drawing and the information contained is not intended to be part of any contract.  
All measurements are approximate and should be used as a guide only. The accuracy of this drawing was intended but not guaranteed. No responsibility on behalf of the drafter or the agent will be taken for any misinterpretations.

Disclaimer: Please note this floor plan is for marketing purposes and is to be used as a guide only. All dimensions are estimates only and may not be exact measurements.