



FOR SALE

UNDER OFFER

IMPRESSIVE FORMER DISPLAY HOME HITS THE MARKET

You are not going to believe this real estate opportunity.

I am presenting to the market a fabulous executive property, with all the bells and whistles. Let's just run through a few of the benefits this home has to offer.

Ducted air-conditioning - tick

Separate office - tick

Media room - tick

Covered entertaining - tick

Two living areas - tick

Butlers pantry - tick

Bar/wine room - tick

Alarm - tick

Honestly, from the moment you enter this property, you will want to call it home. The design of the ground level is open concept, with extra high ceilings, so whether you are entertaining extended family and friends or just chilling with your clan, there is a sense of space and room for everyone.

The galley style kitchen features stone benchtops, gas cooktop and oven, and ample cupboard space. But wait, there is more! This home also has a butlers pantry with a dishwasher and a very contemporary bar room with specialty wine refrigerator and stylish cabinetry. The purposefully designed media room will set any movie buffs heart a-flutter, it even has a seating riser, allowing everyone to get a great view while bringing the movie theatre feeling into the home. The ground floor also has a separate office, double garage and a powder room.

As you ascend the stairs to the second level, you enter the centrally located and private family living space. The natural light fills this space, making you wish you could while the hours away reading a good book. All four bedrooms flow out from this communal space, with three amply sized rooms all with built-ins. The master suite is generously sized, with a private bathroom, walk-in-robe and beautiful plantation shutters. Also located on the second level is a very contemporary main bathroom.

The yard is low maintenance, with grassed areas and easy-care gardens, allowing you to spend

4 BED | 2 BATH | 2 CAR

PRICE:

CONTACT AGENT NOW!

OPEN FOR INSPECTION:

N/A

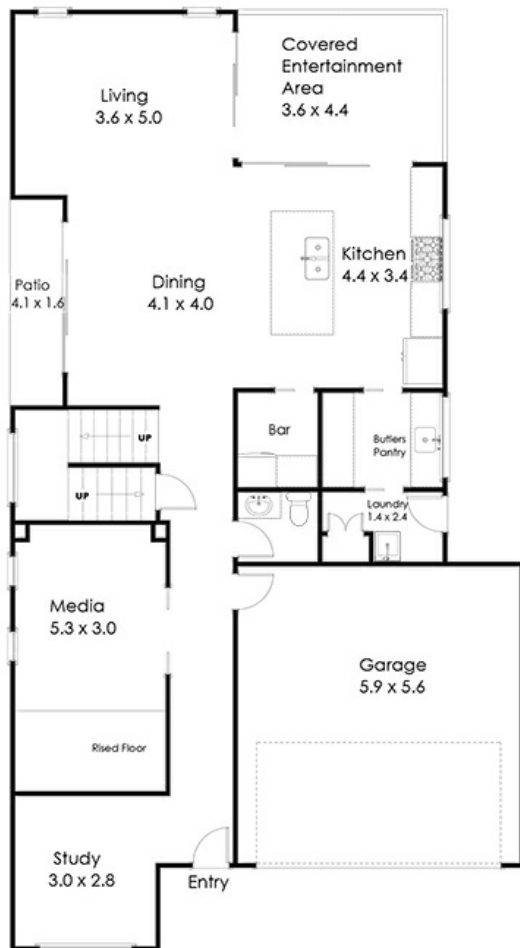


Lacey Roberts

0417785412

laceeroberts@atrealty.com.au

www.atrealty.com.au



Whilst every attempt has been made to ensure the accuracy of the floor plan contained here, measurements of doors, windows rooms and any other items and structures are approximate and no responsibility is taken for any error, omission or mis-statement. Bathroom and kitchen fittings, cupboards and door types and laundry appliances and windows are tokens and approximate the actual fitting installed. This plan is for illustrative purposes and should be used as such by any prospective buyer. Plan drawn by Eagle Eye Photography Service, www.eagleeyehq.com.au Copyright 2019. All rights reserved. No reproduction without license, contact photographer for more information.



44 Coriander Drive Griffin 4503

@realty

Disclaimer: Please note this floor plan is for marketing purposes and is to be used as a guide only. All dimensions are estimates only and may not be exact measurements.