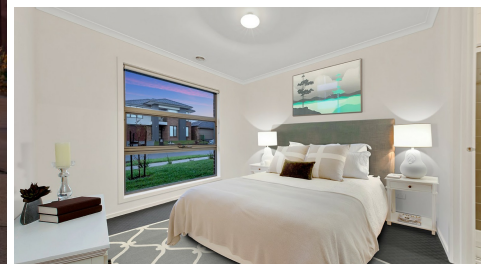




J&J REALTORS



FOR SALE

BEAUTY & ELEGANCE! READY TO MOVE IN!

Found in the popular Highgrove estate and offering you convenient modern family living, this pristine Beachwood home built four bedroom home is sure to impress. Just meters away from fantastic park facilities this property would be perfect for the growing family or even the savvy investor.

- This stunning home includes:-
- Four Bedrooms, Master bedroom offering walk in robe and full ensuite.
- Three Bedrooms with built in robes
- Open plan kitchen & Stainless Steel appliances
- Dishwasher and Stone bench top
- Formal Lounge room
- Meals/dining area
- Quality fixture and fittings
- Split system air conditioning
- Ducted heating
- Separate walk in pantry and a linen closet
- 2,590mm high ceilings
- Double car garage with internal and rear access

As one of the fastest growing suburbs in Melbourne this home offers its new owners a world of opportunity. Highgrove estate has been designed with family and community living in mind with multiple parklands and avenues linking neighbourhoods and is only moments away from central Cranbourne and Berwick. Lush parks and open spaces make family time a breeze plus there is easy access to Shopping on Clyde, schools such as Clyde Primary, sports and recreation facilities.

Don't Miss this opportunity. Contact JAG SINGH On 0430 569 229 Or Jassi Ghuman 0433 089 388 for more information.

Disclaimer: ALL PICTURES SHOWN ARE FOR ILLUSTRATION PURPOSE ONLY.

We have in preparing this document used our best endeavours to ensure that the information contained in this document is true and accurate, but accept no responsibility and disclaim all liability in respect to any errors, omissions, inaccuracies or misstatements in this document. Prospect purchasers should make their own enquiries to verify the information contained in this

4 BED | 2 BATH | 2 CAR

PRICE:

Contact Agent

OPEN FOR INSPECTION:

N/A



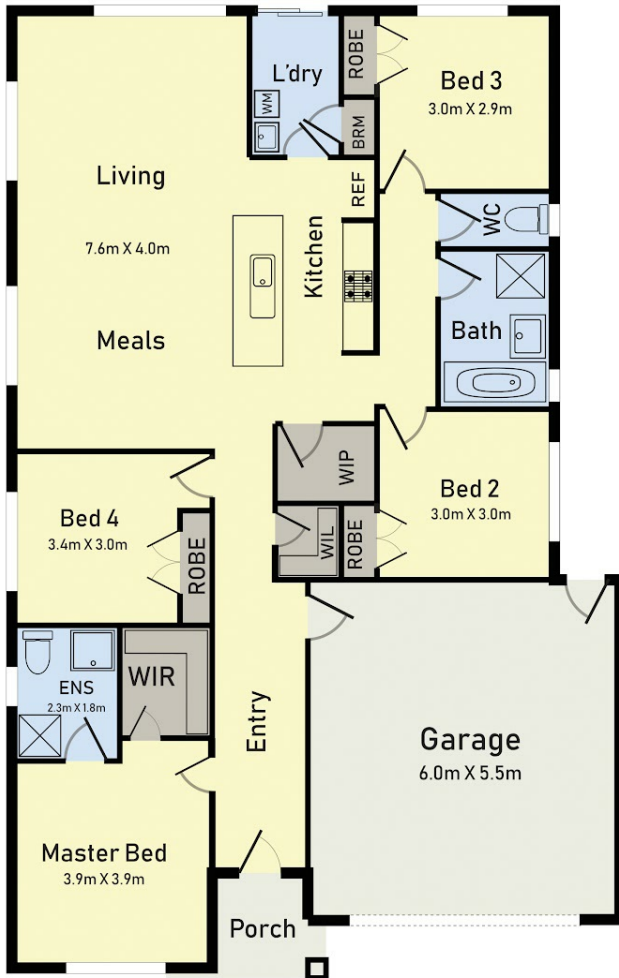
Jag Singh

0430569229

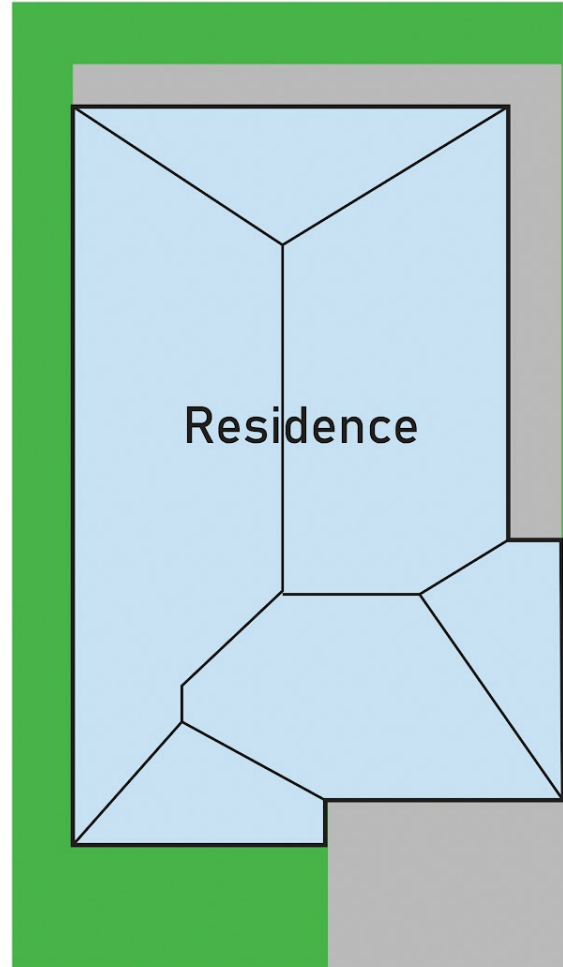
jag@atrealty.com.au

www.atrealty.com.au

Floor Plan



Site Plan



17 Sloane Drive Clyde North

* Dimensions are approximate and for illustrative purposes only

Disclaimer: Please note this floor plan is for marketing purposes and is to be used as a guide only. All dimensions are estimates only and may not be exact measurements.