

FOR SALE

MASONITE LUXURY LIVING STYLE APARTMENT CLOSES TO SYDNEY CBD AND AIRPORTS.

Presenting this neat and tidy 1 bedroom (on two level) well maintained apartment with reverse cycle Air-Conditioning. Offering all the benefits of Masonite luxury style living within the Carena Terrazzo complex. It combines well-designed interiors on two levels, Master Bedroom on the upper level and a large open plan Living/ Dining area, a beautiful Kitchen with Granite bench tops and a laundry on the lower level. Vendor just renovated with Wood Parquet flooring throughout, newly painted, new shower unit, range hood and additional cupboards. One secured underground parking space belongs to this apartment unit.

A very pleasant overlooking view of green natures of gardens from upper and lower balconies. Facilities included within this complex are; Heated indoor pool/ spa/ sauna, Gym, a BBQ area/ covered children playground, a beautiful tiled entrance foyer with lift access and security swipe access and intercom system. A Dentist and Physiotherapy/ Pilates/ Massage at the main entrance when you need one.

A Short walk to Wolli Creek Train Station and a very short drive to Arncliffe train station. Short drive to Sydney CBD, Domestic and an International Sydney Airport. A short walk to a Woolworths supermarket, cafes, restaurants and parks. An apartment that may hard to find.

New Compliant WINDOW SAFETY DEVICES has been installed for the safety of young children and a Compliant Swimming Pool.

Direction: Facing North East Direction

Outgoing:
Council Rates : Approx . \$ 300 per quarter.
Water Rates : Approx. \$ 200 per quarter.
Strata Levies : Approx. \$ 1,200 per quarter.

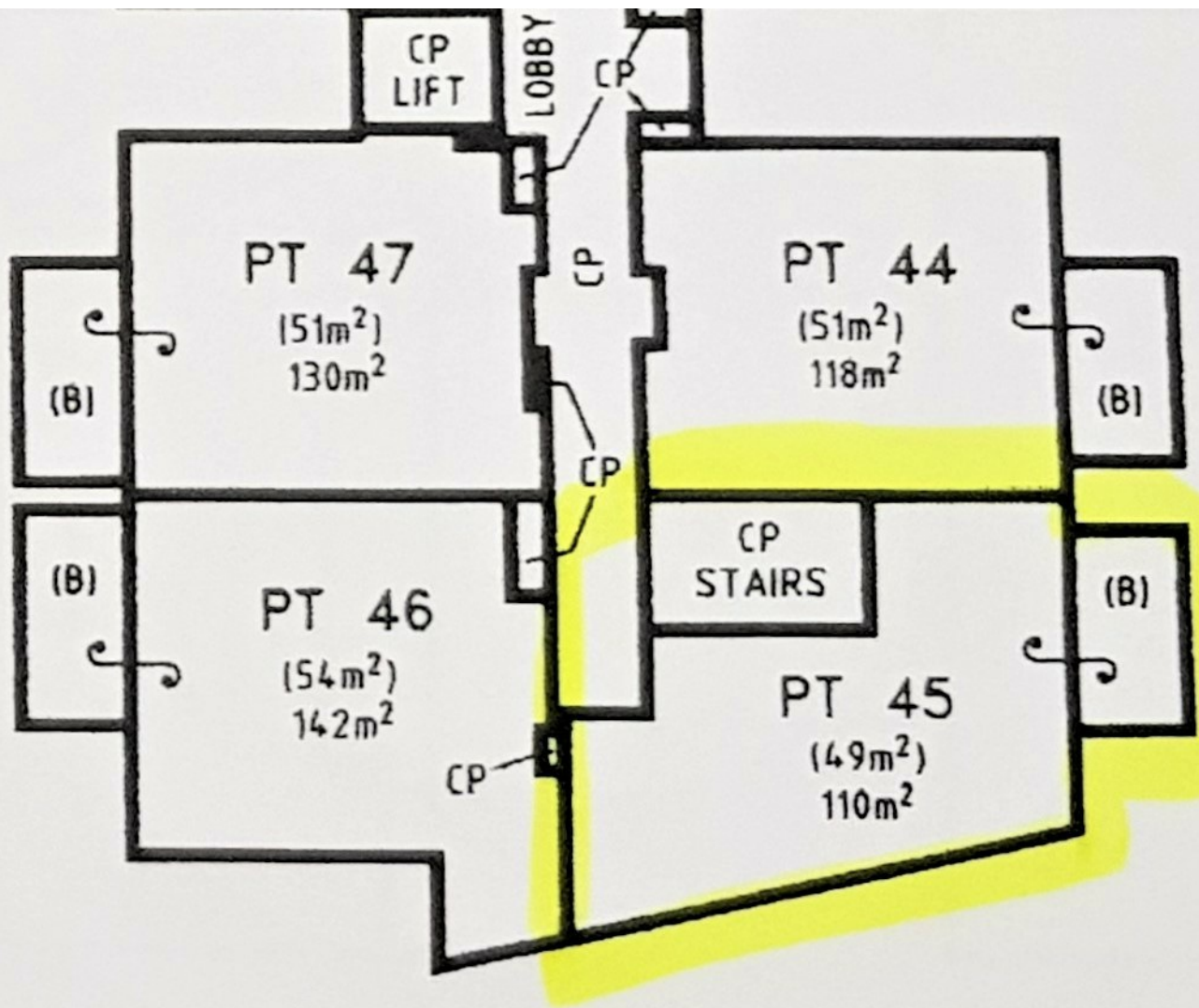
1 BED | 2 BATH | 1 CAR

PRICE:
\$645,000 - \$685,000

OPEN FOR INSPECTION:
N/A



Malcolm (Mao) Ky
0478779935
malcolm@atrealty.com.au
www.atrealty.com.au



Disclaimer: Please note this floor plan is for marketing purposes and is to be used as a guide only. All dimensions are estimates only and may not be exact measurements.