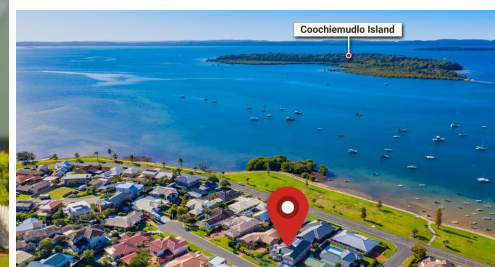


2 NORFOLK COURT, VICTORIA POINT, QLD, 4165



SOLD

UNDER CONTRACT! AUTHENTIC DUAL LIVING, PANORAMIC BAY VIEWS

UNDER CONTRACT!

Often sought but rarely found!

Tastefully renovated specifically for dual living. This 6 bedroom 4 bathroom residence located in a quiet cul-de-sac is ideal for the extended family or those seeking a supplementary income. The two level home offers genuine independent living on both levels, solar power, separate hot water systems and a large workshop & storage area for those who like to tinker.

The street level offers:

- Master includes ensuite featuring Caesarstone vanity, large freestanding bath & leadlight features, large walk in robe & access to rear verandah.
- 3 additional bedrooms with built in robes and a main bathroom & separate toilet
- 9 foot ceilings with ornate plaster mouldings & cornices
- Zoned ducted air conditioning
- Caesarstone kitchen, Smeg appliances including 6 hob gas cooktop, soft close drawers and large central island
- Formal lounge with fireplace
- Open plan living and dining areas with direct access to the large rear verandah, ideal for entertaining whilst soaking in the views

The lower level offers:

- Separate private access with outdoor entertaining and garden space
- Two large bedrooms. Master bedroom with reverse cycle air-conditioning and beautifully appointed ensuite with stone vanities, and freestanding bath
- Quality appointed kitchen with dishwasher, gas cooktop, electric wall oven, soft close drawers & smart stone bench tops which feature throughout this level
- Open plan lounge and dining with air-conditioning. Additional separate family room and study zone
- Views across to the islands

There is so much more to this home that only a viewing will reveal. This presents a unique

6 BED | 4 BATH | 2 CAR

PRICE:
\$1,080,000

OPEN FOR INSPECTION:
N/A



Ben Tafolo
0419260719
tafola@atrealty.com.au
tafalorealty.com.au

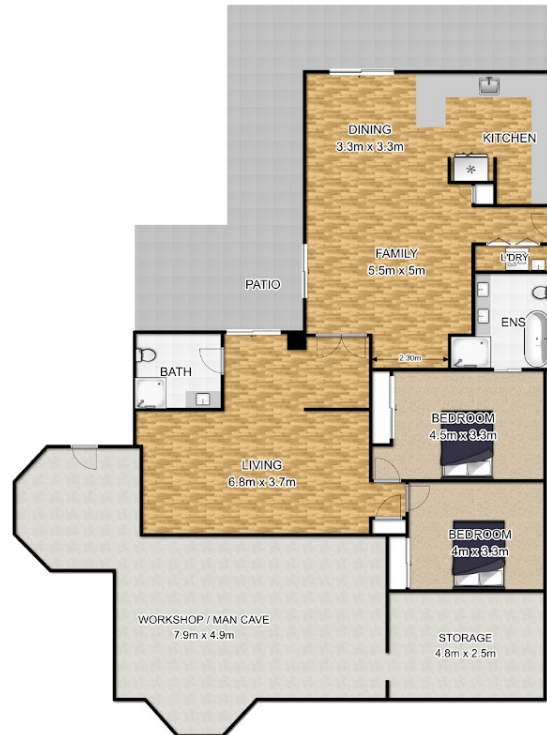
2 Norfolk Court, Victoria Point

Internal 372m²
 External 120m²
 Workshop/Storage 50m²

Total 542m²/58.34 Squares



Upper Level



Lower Level

Whilst every attempt has been made to ensure the accuracy of this plan, all measurements are approximate and no responsibility is taken for any error, omission or mis statement. This plan is for illustrative purposes only and should be used as such.

Disclaimer: Please note this floor plan is for marketing purposes and is to be used as a guide only. All dimensions are estimates only and may not be exact measurements.