

**SOLD**

## PRIME DEVELOPMENT LAND

RARE OPPORTUNITY TO PURCHASE PRIME LAND IN MOUNT GAMBIERS COMMERCIAL STREET. ALSO FRONTING JUBILEE HIGHWAY , MAKING THIS PROPERTY WITH BEST EXPOSURE TO THOUSANDS OF VEHICLES EVERY DAY. IDEAL FOR A RANGE OF DEVELOPMENTS FROM ACCOMMODATION, CAFE, SHOWROOM RETAIL OR OFFICES. (SCA) ZONED COMMERCIAL AND MEASURING 1959 SQ/M. WITH WATER AND POWER UPGRADES ALL READY IN PLACE. PLANS AVAILABLE OF APARTMENT DEVELOPMENT.

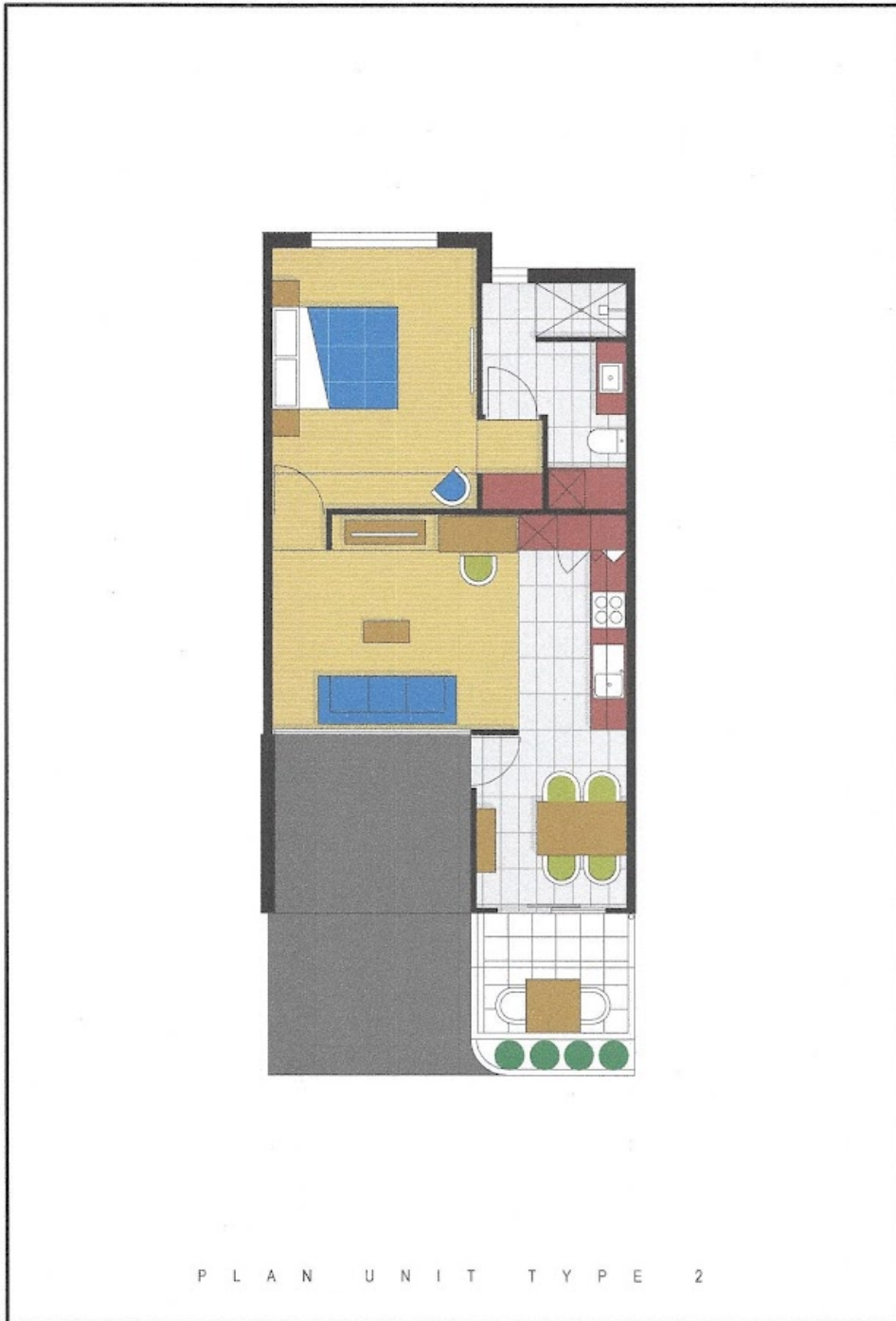
0 BED | 0 BATH | 0 CAR

PRICE:  
\$370,000

OPEN FOR INSPECTION:  
N/A



**Peter Dempsey**  
0418854393  
peterdempsey@atrealty.com.au  
[peterdempseyatrealty.com](http://peterdempseyatrealty.com)  
RLA: 269823



P L A N   U N I T   T Y P E   2

Disclaimer: Please note this floor plan is for marketing purposes and is to be used as a guide only. All dimensions are estimates only and may not be exact measurements.

