

## FOR SALE

### BEAUTIFUL TIMBER HOME IN A CUL DE SAC IN A VERY QUIET LOCATION .

At the End of a Cul De Sac on a quiet street sits this very private highset timber home on 1000m2 block that overlooks the peaceful neighbouring rainforest.

This home has a beautiful feel from the moment you step inside with its easy flow design . The living area exudes a warmth with the centrally placed combustion fireplace and polished timber flooring, which flows seamlessly into the well appointed kitchen/dining area. Large windows and doors open out onto the very spacious deck, bringing the outside in and making it a great extra living space for entertaining.

Downstairs has an extra room with its own private entrance, toilet and vanity that can be anything from a home office, gym, extra bedroom or potential for dual living. There's also plenty of room for the home handyman with the lockable under house workshop.

The kids also have plenty of room to play and explore with their own cubbyhouse, gardens with pathways and a nice flat grassy area.

There is nothing to do but move in and enjoy the sounds of nature, entertain off the back deck or tinker around in the large under house workshop/shed.

#### Upstairs

4 bedrooms all with carpet, 2 with built ins  
Separate walkthrough study/ nursery or 5th bedroom off main  
Ensuite  
Large Living  
Open plan kitchen/dining  
Modern kitchen with stone benchtops  
Bosch gas cooktop, electric oven and dishwasher  
Main bathroom  
Separate toilet  
Timber flooring throughout living areas

5 BED | 3 BATH | 2 CAR

#### PRICE:

SOLD by KARIN SMITH

#### OPEN FOR INSPECTION:

N/A

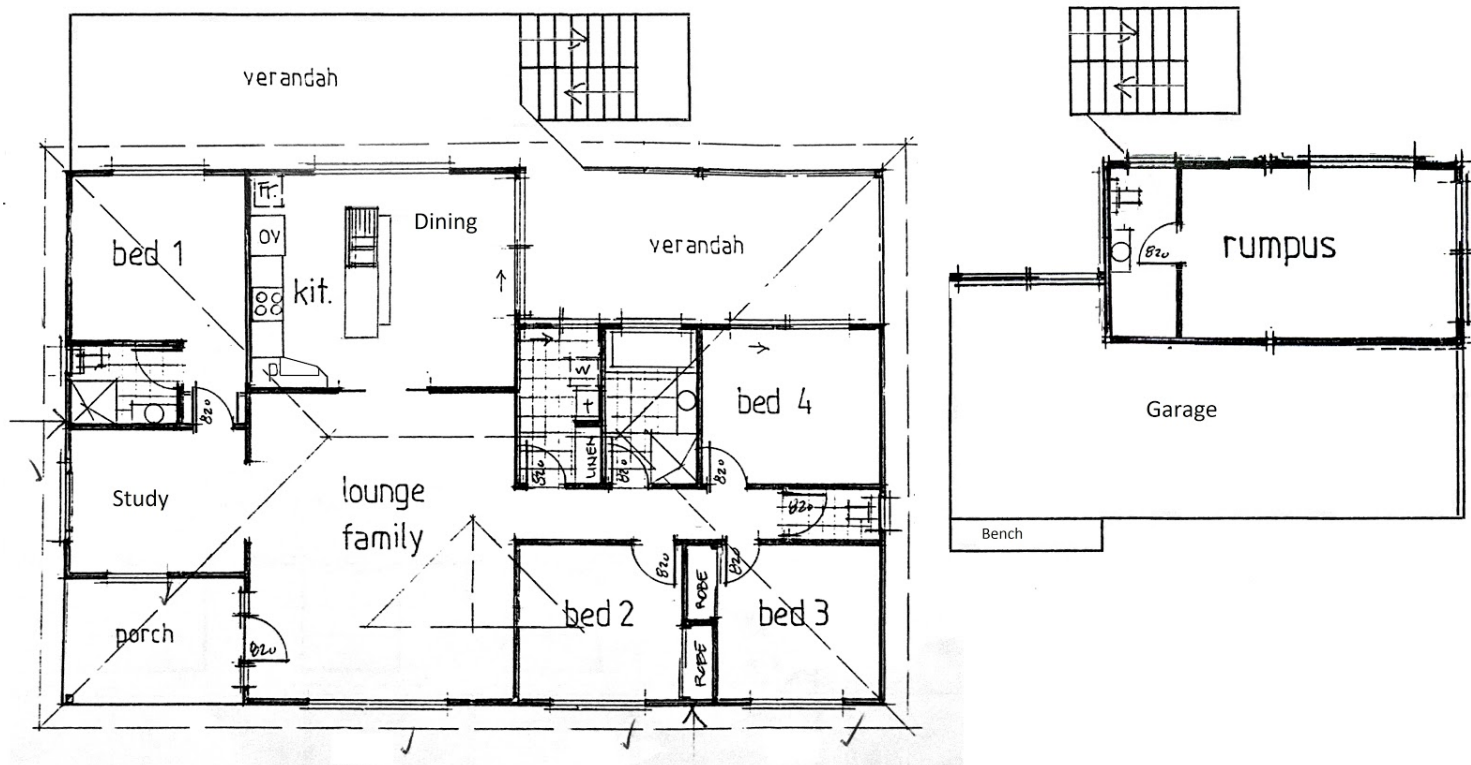


**Karin Smith**

**0403012639**

[karinsmith@atrealty.com.au](mailto:karinsmith@atrealty.com.au)

[www.atrealty.com.au](http://www.atrealty.com.au)



Disclaimer: Please note this floor plan is for marketing purposes and is to be used as a guide only. All dimensions are estimates only and may not be exact measurements.