

FOR SALE

135M2 - RARE D STYLE CONDOR APARTMENT - INCOME OR MOVE IN READY

Meticulous owner occupiers have purchased elsewhere and are motivated to sell their HUGE 135m Surfers Paradise CBD apartment which is a must see as genuine buyers will certainly be impressed by the quality and condition of this large 17th floor offering in the most desired and sought after floor plan the Condor offers - D Style.

With a large 135m2 floor plan there is ample room for a true 3rd bedroom and also potential for a 3rd bathroom as all plumbing works already accommodate the complete separate 3rd toilet / laundry area making a 3rd bathroom addition an achievable option budget wise.

A potential to combine a holiday getaway with a income achieving property this furnished HUGE 135m2 apartment in the prestigious 'Condor' is the one you have been awaiting!

- Excellent Onsite Management
- Body Corp approx \$147 per week
- Ideal location - Council rates approx \$1530.65 per annum
- Well maintained grounds / body corporate

Easily configured to a 3 bedroom 3 bathroom apartment, Inspect now as motivated sellers invite all offers to be submitted.

For more further information, an inspection or an appraisal on your current property call Trent on 0404 980 878 today.

2 BED | 2 BATH | 1 CAR

PRICE:

\$440,000 - \$465,000

OPEN FOR INSPECTION:

N/A



Trent Mark

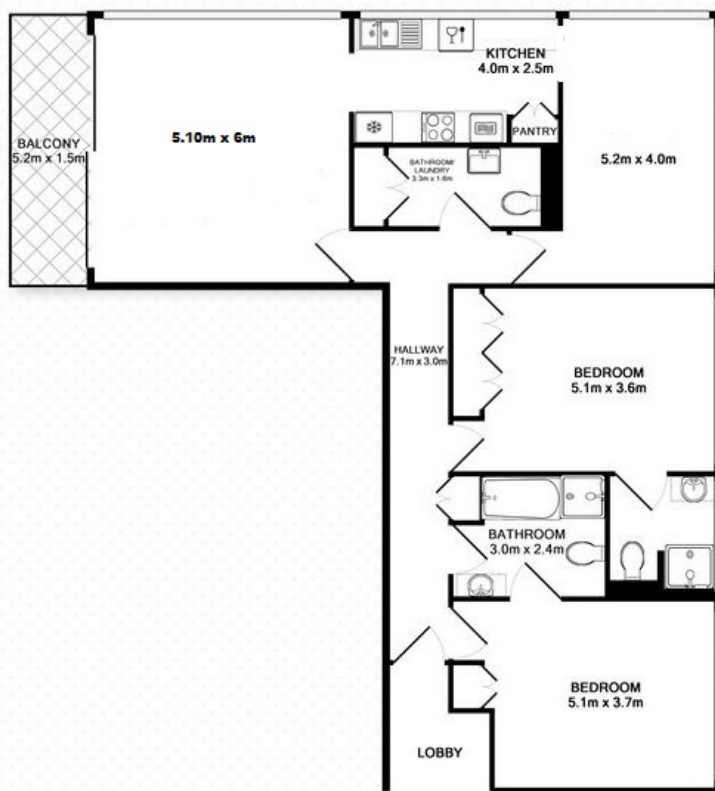
0404980878

trent@atrealty.com.au

www.atrealty.com.au

Total approx floor area 135m²

FLOOR
PLAN



REAL ESTATE FLOOR PLANS | houseguru.com.au

Whilst every attempt has been made to ensure the accuracy of the floor plan contained here, measurements of doors, windows, rooms and any other items are approximate and no responsibility is taken for error, omission or mis-statement. This plan is for illustrative purposes only and should only be used as such by any prospective purchaser. The services systems and appliances shown have not been tested and no guarantee as to their operability or efficiency can be given. Made with Metropix ©2015

Disclaimer: Please note this floor plan is for marketing purposes and is to be used as a guide only. All dimensions are estimates only and may not be exact measurements.