

SOLD

DESIGN YOUR OWN LIVING SPACE IN THIS INNOVATIVE BOUTIQUE INNER CITY APARTMENT

Enjoy inner city lifestyle in this boutique apartment situated in an architect designed layout of 21 units.

This open plan apartment affords executive lifestyle and fit out. The two generous sized bedrooms both access over-sized bathrooms. Wall to floor tiles and luxury shower in the en-suite compliment the easy living lifestyle.

Clever layout of the Master bedroom provides twin walk in wardrobes that ensure optimum closet space and privacy through to your en-suite.

Enjoy entertaining from the well appointed chefs kitchen that adds serviceability and a focal point to the open plan living area. Clever design allows dual use of the open balcony with an ability to enjoy the balmy evening or convert this living area to a cosy nook if the weather sets in.

From city executive to first home buyer you will delight in the short stroll to the eclectic stones corner village. Relax with easy transport to the city centre or near-by hospitals and universities.

Air conditioned with premium fixture and fittings, this well positioned property will provide a sanctuary to the owner occupier. Investors will be attracted by the high rental returns and low maintenance on this almost new property.

Gated intercom and security car park complete the picture.

- Bright open plan living spaces with air-conditioning.
- Well appointed chefs kitchen with stone bench tops and stainless steel appliances
- Master bedroom features twin walk-in robes to access the luxury en-suite
- Large second bedroom features built in robe
- Main bathroom is adjacent to the second bedroom, providing an en-suite feel
- This over-sized bathroom featuring modern shower/bath, stone vanity and built-in linen

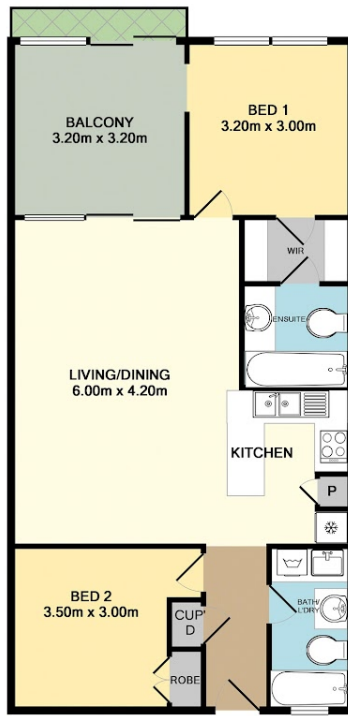
2 BED | 2 BATH | 1 CAR

PRICE:
\$425,000

OPEN FOR INSPECTION:
N/A



Adrian Matthews
0403171644
adrianmatthews@atrealty.com.au
www.atrealty.com.au



TOTAL APPROX. FLOOR AREA 80.0 SQ.M. (861 SQ.FT.)

Whilst every attempt has been made to ensure the accuracy of the floor plan contained here, measurements of doors, windows, rooms and any other items are approximate and no responsibility is taken for any error, omission, or mis-statement. This plan is for illustrative purposes only and should be used as such by any prospective purchaser. The services, systems and appliances shown have not been tested and no guarantee as to their operability or efficiency can be given
Made with Metropix 62018

Disclaimer: Please note this floor plan is for marketing purposes and is to be used as a guide only. All dimensions are estimates only and may not be exact measurements.