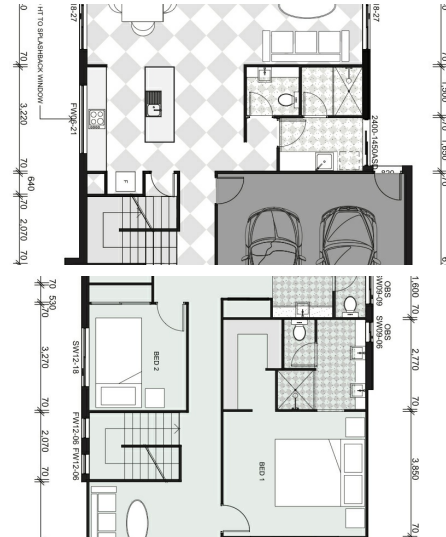


6 KELLY PLACE, LOGANLEA, QLD, 4131



SOLD

BRAND NEW STUNNING FAMILY HOME!

Stunning quality family home offer great 5 bed, 2.5Bath, 2 living space, 2 Kitchen & 2 Garage with full turnkey completion!

Main details of inclusion List:

- * Ducted Air-conditioning
 - * 20mm Smart Stone Bench Tops
 - * 900mm Stainless Steel European made Free Standing Gas Cooktop/Electric Oven - and R'hood
 - * European made Dishwasher
 - * European Designer Tapware and Basins
 - * Raised 2702mm ceilings
 - * Variety of Designer Light Fixtures
 - * Designer Ceramic Tiles
 - * Window Coverings, FlyScreens, Security screen & Locks to all Windows / Doors
 - * Fully Landscaped / Fenced
 - * Driveways and Paths (Stencilled and Exposed Aggregate Designs)
 - * Finance solutions available
 - * These are only a of our Premium Designer Inclusions available, and don't delay!
- For inspection please call Ashraf Payman

5 BED | 3 BATH | 2 CAR

PRICE:
\$200,000

OPEN FOR INSPECTION:
N/A



Ash Payman
0469385846
ash@atrealty.com.au
www.atrealty.com.au