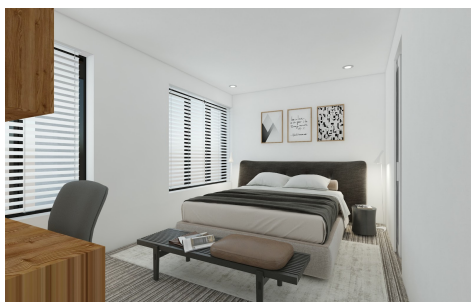


26 NIGHTINGALE ROAD  
MICKLEHAM



# FOR SALE

THIS IS THE IDEAL FAMILY HOME

3  | 2  | 2 

This quality home has been designed with you and your family in mind, with everything you could need in a 3 bedroom home. Featuring quality finishes throughout, from caesar stone bench-tops, the handles to the taps, this is a modern dream home. The generous master bedroom with ensuite located towards the front of the home creates a quiet retreat for adults. The remaining 2 bedrooms located towards the rear making it the ideal kids zone. The open plan main living area and kitchen feels spacious and well appointed, you will love living and entertaining here.

Featuring:

- walk in pantry
- Stone Bench Tops
- Large bedrooms
- Stainless Steel Appliance
- Ducted Evaporative Cooling
- Ducted Heating
- Quality Carpeted Bedrooms
- Built In Robes

PRICE: \$445,000 - \$485,000

OPEN FOR INSPECTION: N/A .

Wayne Hutchinson | 0424370940 | [wayne@waynehutchinson.com.au](mailto:wayne@waynehutchinson.com.au) | [waynehutchinson.com.au](http://waynehutchinson.com.au)

26 NIGHTINGALE ROAD,  
MICKLEHAM



Disclaimer: Whilst every effort has been made to ensure the accuracy of these particulars, no warranty is given by the vendor or the agent as to their accuracy. Interested parties should not rely on these particulars as representations of fact but must instead satisfy themselves by inspection or otherwise.  
(Rev AU#1)

Wayne Hutchinson | 0424370940 | wayne@waynehutchinson.com.au | waynehutchinson.com.au