

**SOLD**

## MEDITERRANEAN STYLE ON A GRAND SCALE - ABSOLUTE PRIVACY - DUAL LIVING - WALK TO SCHOOLS & SHOPS

SOLD BY MATHEW ANDERSON - MANGO HILLS LEADING AGENT

Set on an elevated location in Mango Hill's most sought after position. This home exudes space, style and a sense of arrival as you drive up your own private tree lined driveway to your urban hideaway. Offering privacy in a truly unique home that will surprise you.

This exclusive purpose-built family home is unlike any other on the market. Versatile, low maintenance luxury living set on 1302m2 on the highest point in Mango Hill, it can never be replicated. Not just a luxury home but an upgrade to your LIFESTYLE and a quality of life that will be the envy of everyone you entertain.

With over 45 squares of indoor and outdoor living and entertaining spaces this expansive home will suit large families looking for all the modern features and conveniences in a super central walk to location. Simply move in now and relax because all the hard work has been done here for you to enjoy in this custom-built feature packed family home.

### Entertainment & Enthrall

This home is an entertainer's delight for any occasion with so many options at any time of day and in any weather situation.

At the heart of this home is the central living area comprising of kitchen, living and dining spaces flowing through to the poolside alfresco area.

A housewarming party is in order with this gigantic outdoor deck and sparkling inground pool. It's the most liveable and frequently used area in the whole house where you can unwind with a sunset cocktail and catch the cool bay breeze in the afternoon.

Winding shaded pathways lead all around through tropical low maintenance gardens manicured to perfection. This home offers the generosity of living spaces both indoors and out that you can't find on smaller blocks. Kids and pets can run free in safety here.

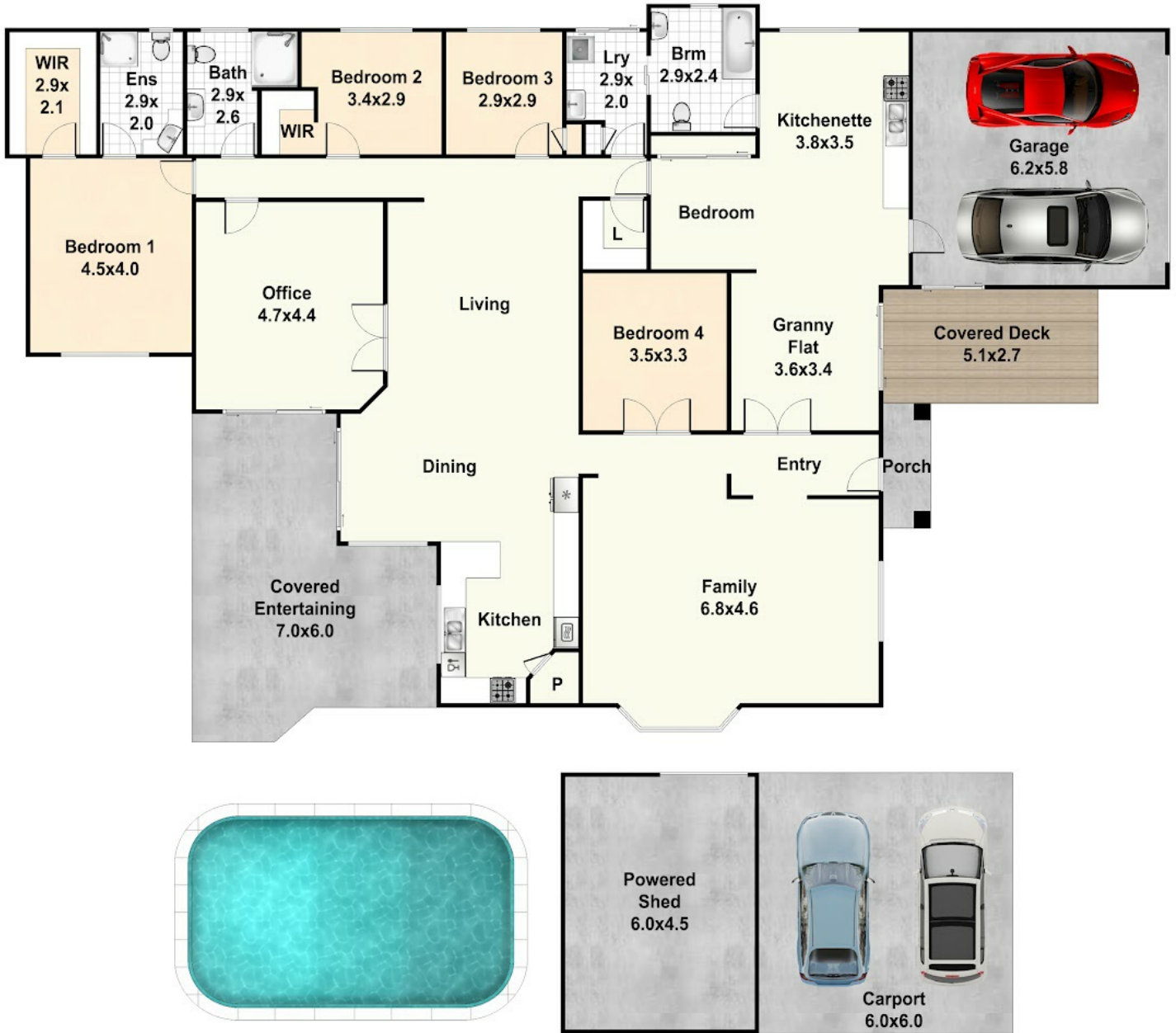
5 BED | 3 BATH | 4 CAR

PRICE:  
\$715,000

OPEN FOR INSPECTION:  
N/A



**Frontline Properties**  
0452426095  
fpa@atrealty.com.au  
[www.atrealty.com.au](http://www.atrealty.com.au)



Disclaimer: Please note this floor plan is for marketing purposes and is to be used as a guide only. All dimensions are estimates only and may not be exact measurements.

EXT - 116 sqm

Frontline Properties  
 0452426095  
 fpa@atrealty.com.au  
 www.atrealty.com.au

# Mango Hill

Every effort is made to ensure accuracy. All measurements, positioning and fixings are approximate. Measurements in metres.

