



FOR SALE

DOUBLE UP – GREAT DUPLEX!

Want to live in a desirable area located only 3.6 km to the beautiful Main Beach of Nambucca Heads and 1.4 km to the Island Golf Club? Then this solidly built brick & tile duplex, brought up to current code and renovated with quality new kitchens is just the thing!

There are a number of options with this property: live in one and lease the other, share both with your extended family or rent both out.

As an astute investor you may want to consider adding this easy care property to your investment portfolio – previously leased at \$300 - \$320 per week each unit. With a large portion of unused land you may be able to add another dwelling (subject to Council Approval).....

Neat, tidy and featuring open plan design downstairs with a second toilet in the laundry, 2 bedrooms with built in robes upstairs along with the main bathroom.

Unit 1 has an enclosed carport and Unit 2 has had the carport completely enclosed to give an extra living space.

Set on a large 751.8 (approx) sq mtr corner block with a double carport and garden shed at the rear.

Call Narelle or Craig for your private inspection today!

We are local Nambucca Heads Agents with our Head Office on the Gold Coast.

We make no representation or warranty as to the accuracy, reliability or completeness of the information relating to the property. Some information has been obtained from third parties and has not been independently verified. Accordingly, no warranty, representation or undertaking, whether express or implied, is made and no responsibility is accepted by us as to the accuracy of any part of this, or any further information supplied by or on behalf of our vendors whether orally or in writing.

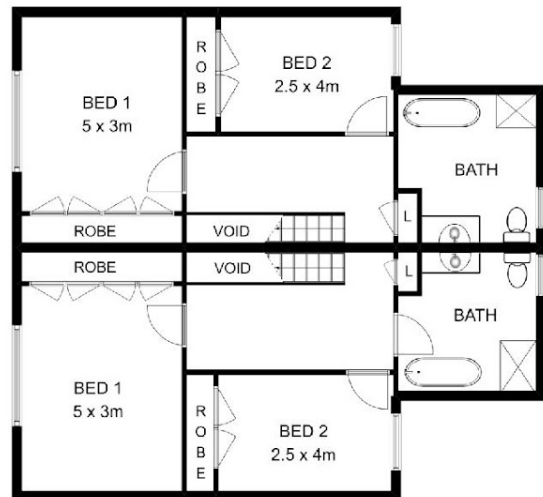
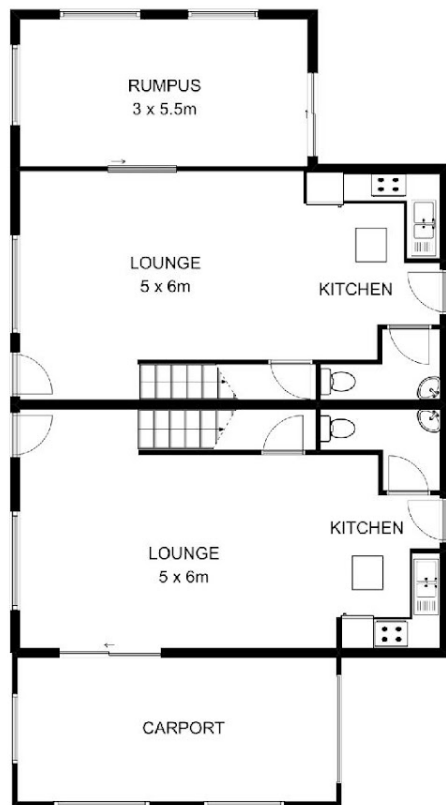
4 BED | 2 BATH | 3 CAR

PRICE:
\$510,000

OPEN FOR INSPECTION:
N/A



Narelle Harper
0435054625
narelleharper@atrealty.com.au
www.atrealty.com.au



14 HIBISCUS CRESCENT, NAMBUCCA HEADS

This floor plan is not to scale. Areas and dimensions are approximate and therefore plan should only be used for illustrative purposes.

Disclaimer: Please note this floor plan is for marketing purposes and is to be used as a guide only. All dimensions are estimates only and may not be exact measurements.