

FOR SALE

PERFECT FIRST HOME- OWNER READY TO SELL NOW AND AWAITING OFFERS!!

Located in leafy, family friendly Maridale Park, a perfect choice for the growing family seeking a relaxed lifestyle in a superb location.

FEATURES INCLUDE:

- * Generous master bedroom with ensuite
- * Three additional bedrooms all with built-in wardrobes
- * Formal living area and separate dining room
- * Spacious functional light filled kitchen with dishwasher and ample storage
- * Neutral tones throughout with new Karndean looselay longboard flooring to most areas. Tiles to additional areas.
- * Great covered outdoor entertainment area with views to parklands
- * 633m2 corner block
- * Double lock-up garage
- * Ceiling fans throughout

Situated amongst the Coolnwynpin Nature Refuge, the sound of birds and sight of Wallabies will be a welcoming change from the hustle and bustle of everyday life. Close to buses, walking distance to Coolnwynpin State School, shopping centres and easy access to the City and Motorway.

This property will not last long. Make sure you are the first to view by calling Stephanie from @realty on 0438 338 720 for a private inspection or come along to one of our open home inspections.

4 BED | 2 BATH | 2 CAR

PRICE:

Offers Over \$479,000

OPEN FOR INSPECTION:

N/A

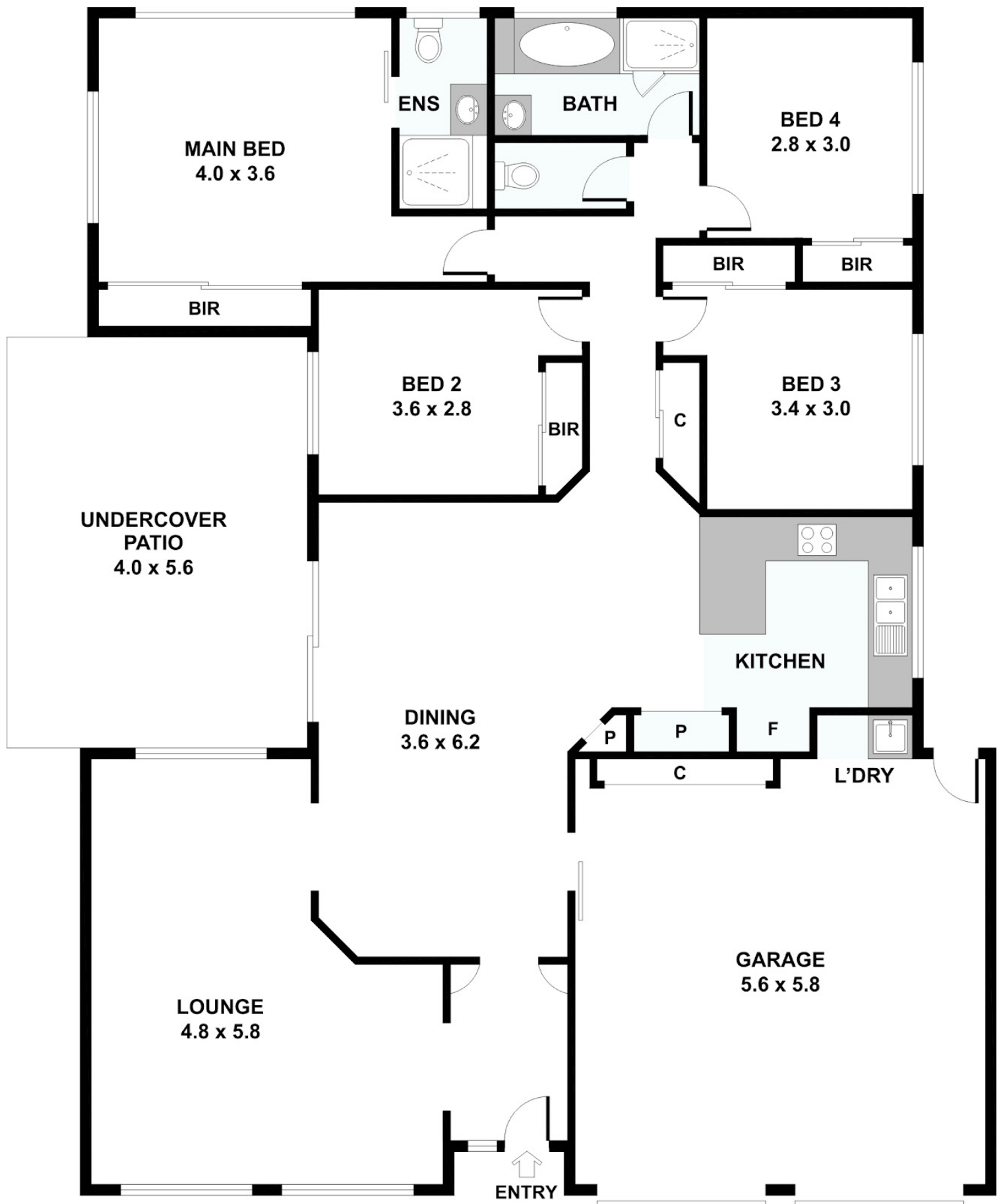


Stephanie Crawford

0438338720

stephanie.crawford@atrealty.com.au

www.atrealty.com.au



Disclaimer: Please note this floor plan is for marketing purposes and is to be used as a guide only. All dimensions are estimates only and may not be exact measurements.