



**SOLD**

## HUGE FAMILY HOME IN QUIET LOCATION

A rare opportunity has presented itself to occupy a unique residence in the sought after Comet Bay Schools' catchment area. This huge home is situated on a fantastic 773sqm block which has provided enough space to accommodate all those extra items that are often hard to find, such as the extra large double garage with internal storage/workshop space, gated side access large enough to park a caravan, fantastic heated swimming pool, extensive outdoor alfresco areas and still space for a great sized grassed area for the kids and pets to play.

Some of the many features of this home include;

- \* Huge master bedroom with large walk in robe and enormous en-suite bathroom
- \* 4 further double bedrooms all boasting double built in robes, bed 5 has large walk in robe
- \* Separate home theatre room/lounge room
- \* Huge study/home office with further built in storage
- \* Open plan casual living area looking out to the rear of the property and large alfresco area
- \* Enormous kitchen with extensive storage space, walk in pantry, plus additional pantry/linen storage
- \* Ducted reverse cycle air conditioning throughout
- \* 5kw solar panel system and gas hot water system
- \* Solar heated swimming pool with water feature
- \* Huge under main roof alfresco area, plus additional bbq patio area, grassed area and powered shed
- \* Well maintained gardens front and rear, fully reticulated from a bore

As these opportunities don't present often you will need to be quick. If you wish to view this property asap give me a call now.

Disclaimer: This description has been prepared for advertising and marketing purposes only. It is believed to be reliable and accurate, however buyers must make their own independent enquiries and must rely on their own personal judgement about the information included in this advertisement. @realty provides this information without any express or implied warranty as to its accuracy or currency.

**5 BED | 2 BATH | 2 CAR**

**PRICE:**  
**\$536,000**

**OPEN FOR INSPECTION:**  
**N/A**



**Lisa Drylie**  
**0433048512**

[lisadrylie@atrealty.com.au](mailto:lisadrylie@atrealty.com.au)

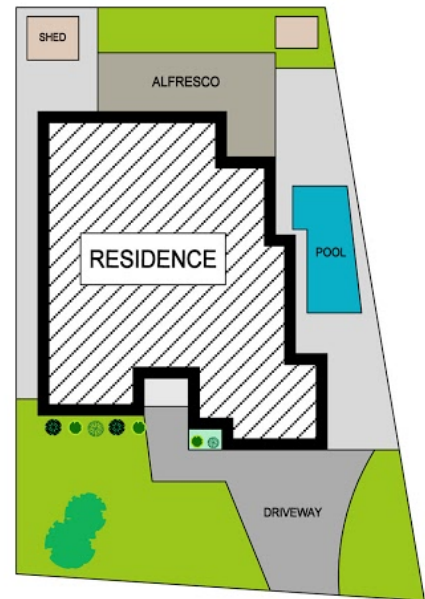
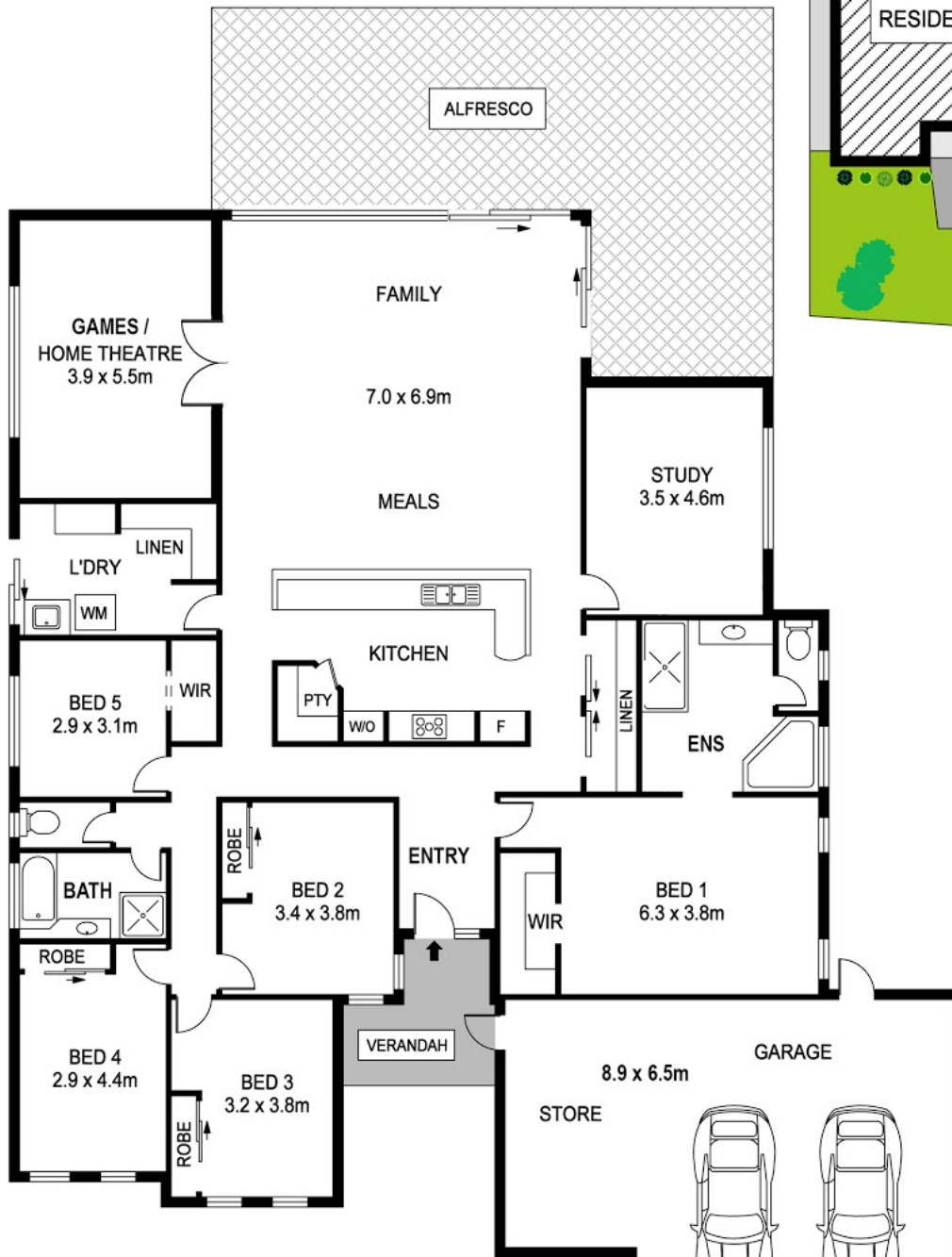
[www.lisadrylierealestate.com](http://www.lisadrylierealestate.com)

# 56 Milona Drive SECRET HARBOUR



Block Size 773m<sup>2</sup> | 5 Bedrooms | 2 Bathrooms | 2 Car  
Internal 260.12m<sup>2</sup> | External 117.6m<sup>2</sup> | Total 377.72m<sup>2</sup>

Lisa Drylie | 0433 048 512



Disclaimer: Please note this floor plan is for marketing purposes and is to be used as a guide only. All dimensions are estimates only and may not be exact measurements.



REAL ESTATE FLOOR PLANS | [houseguru.com.au](http://houseguru.com.au) | © House Guru Real Estate Photography™

Whilst every attempt has been made to ensure the accuracy of the floor plan contained here, measurements of doors, windows, rooms and any other items are approximate and no responsibility is taken for error, omission or mis-statement. This plan is for illustrative purposes only and should only be used as such by any prospective purchaser. The services systems and appliances shown have not been tested and no guarantee as to their operability or efficiency can be given.

Lisa Drylie  
0433048512  
lisadrylie@atrealty.com.au  
[www.lisadrylierealestate.com](http://www.lisadrylierealestate.com)

