



## FOR SALE

### PRICE REDUCED FOR QUICK SALE HEART & SOUL

The owners have put their Heart & Soul in this one so you can enjoy. Modern, fresh and ready to be called home. Beautifully presented 3 bedroom 1 bathroom home. Large tiled living area with split system air conditioner ceiling fan and large storage room. Freshly painted with new downlights throughout. Modern renovated bathroom, kitchen with slow close drawers and high gloss finish plus laundry with ample storage and bench space.

The spacious master bedroom has ceiling fan, split system air conditioner, TV point, new carpet and built in robes. Minor bedrooms have ceiling fans, built in robes and new carpet. Quality blinds for all windows, freshly painted skirting boards in all rooms complete this home.

Entertain under the large patio overlooking the large rear yard complete with garden shed and a sandpit for the kids and enough room for a pool or large workshop or both. Rear access through carport with brand new roller-door and gated to keep kids and pets in plus side access is available for the boat or caravan.

With beautiful manicured gardens both front and back which are serviced by the bore, this property won't be on the market long.

Within walking distance to primary schools, shops and park only meters from the bus and minutes to large shopping centers and beaches.

Light modern decor

Quality fixtures and fittings

Freshly painted

New carpets

Ceiling fans in all bedrooms

Split system in master & lounge

Updated kitchen, Bath and laundry

Beautiful established gardens

New garage roller door

Drive through carport

Potential side access

Bore and retic

new driveway.

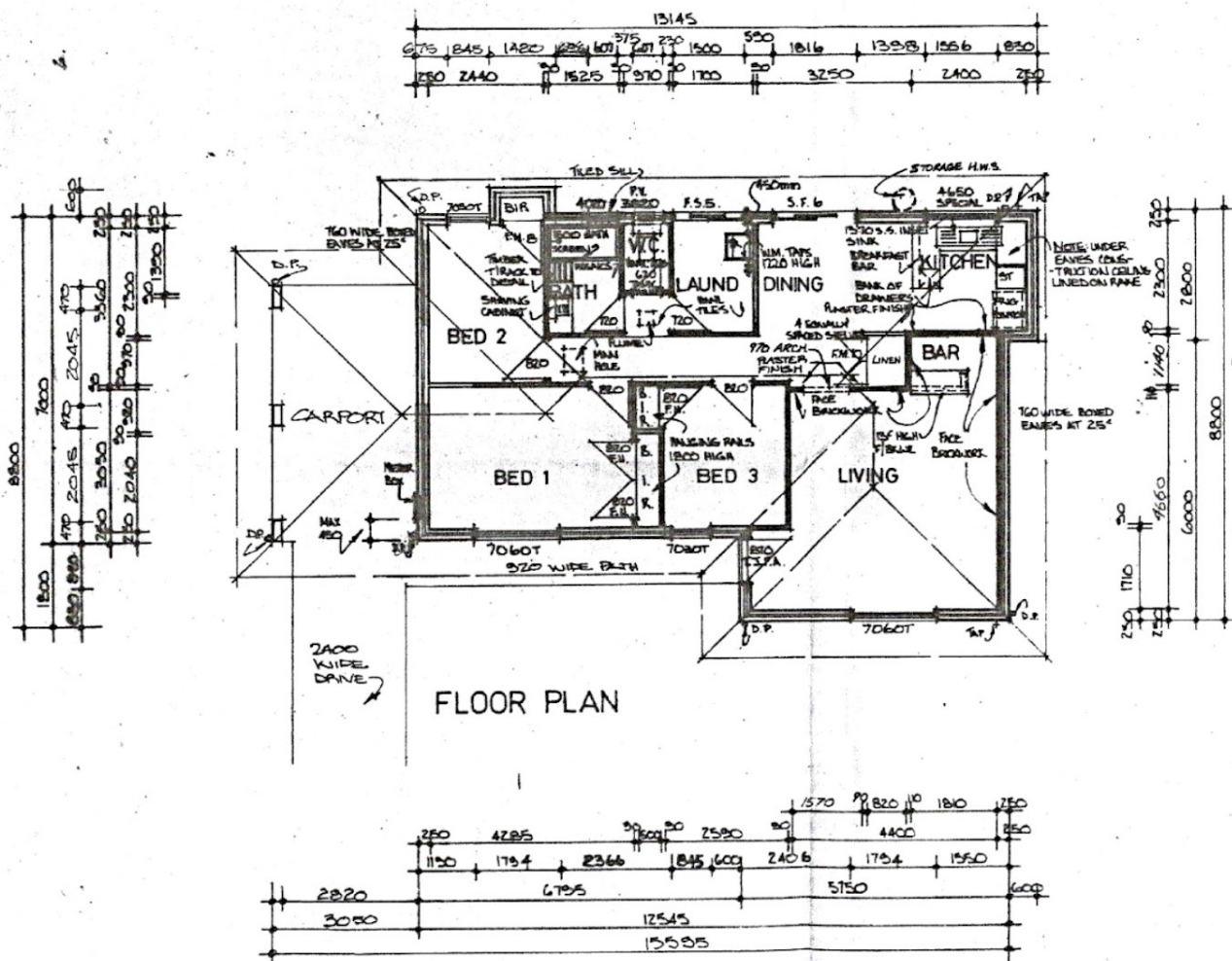
3 BED | 1 BATH | 1 CAR

PRICE:  
\$269,000

OPEN FOR INSPECTION:  
N/A



**Liz Smith**  
**0431926144**  
lizsmith@atrealty.com.au  
[www.atrealty.com.au](http://www.atrealty.com.au)



Disclaimer: Please note this floor plan is for marketing purposes and is to be used as a guide only. All dimensions are estimates only and may not be exact measurements.