



SOLD

LOTS OF SURPRISES HERE!

You will be pleasantly surprised when you inspect this home. From its generous spaces to the green, leafy outlook from every room, this home does not disappoint! Built approximately 13 years ago, this master-built home is as solid as they come. Offering two spacious living areas opening out to a covered outdoor area, if you are after space, then this is the home for you. Everything has been designed on a grand scale including three generous sized bedrooms, larger than normal ensuite and main bathroom, separate office/4th bedroom and storage everywhere. The clever floor plan allows privacy for all family members as well as plenty of room when everyone is together! On a large 761sqm lot with a perfect north-east aspect, the gardens are just magical with a blend of mature tropical and native plants surrounding the home...it is green and lush from every window. Located in a great location, just a 3 minute walk to The Bowlo and the sports fields and a flat walk into the village, this home offers great value for any family.

4 BED | 2 BATH | 2 CAR

PRICE:
\$915,000

OPEN FOR INSPECTION:
N/A

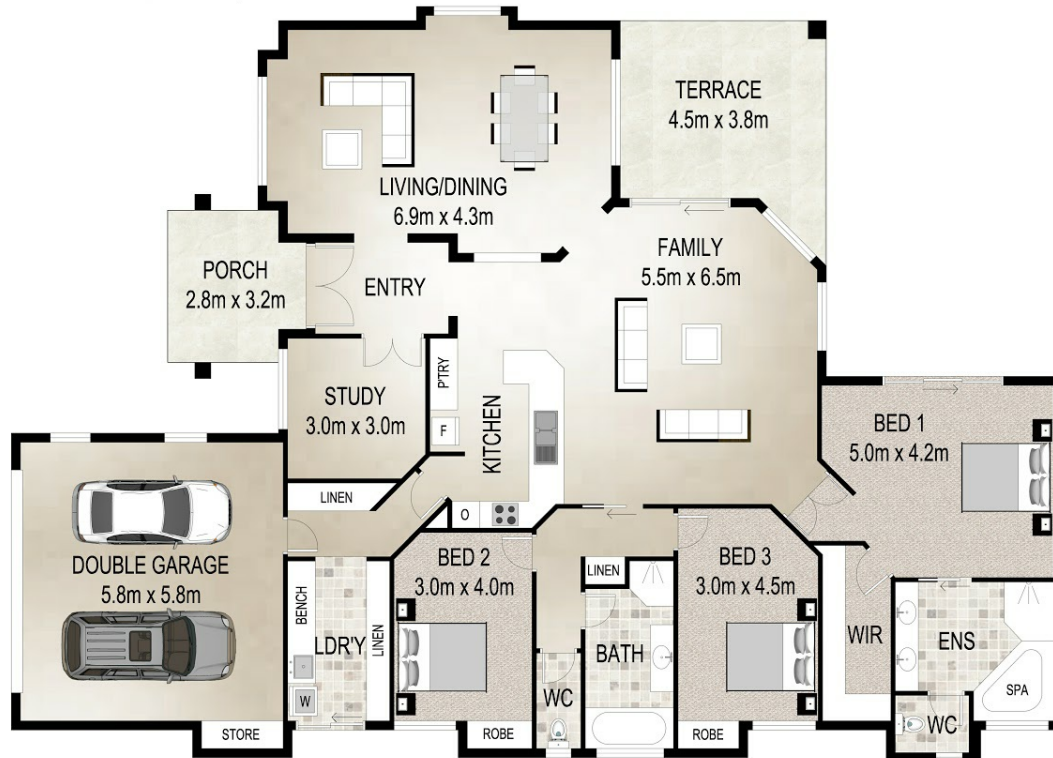


Janice Maple
0401026359
janicemaple@atrealty.com.au
www.atrealty.com.au

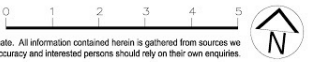
19 Blackwood Crescent, Bangalow

3 Bedrooms | 2 Bathrooms | 2 Cars

Floor Area : 247 sq.m.



Scale in metres. Indicative only. Dimensions are approximate. All information contained herein is gathered from sources we believe to be reliable. However we cannot guarantee its accuracy and interested persons should rely on their own enquiries.



Disclaimer: Please note this floor plan is for marketing purposes and is to be used as a guide only. All dimensions are estimates only and may not be exact measurements.