

SOLD

IMMACULATE, MODERN HOME ON LEVEL LAND.

Well thought out, modern, energy efficient home. Ideal for Families, Couples, Retirees or the Investor, ready to buy now.

Features:

- Large open plan living area.
- Big open kitchen, with island bench and ample cupboard space.
- Main bedroom with ensuite and walk-in robe
- Fully insulated, with double glazed windows, making for a warm and cosy home
- Outdoor entertaining deck, accessed from living area
- Level grounds, landscaped, low maintenance with irrigated watering system.
- Pet friendly fully fenced yard, plus two garden sheds.

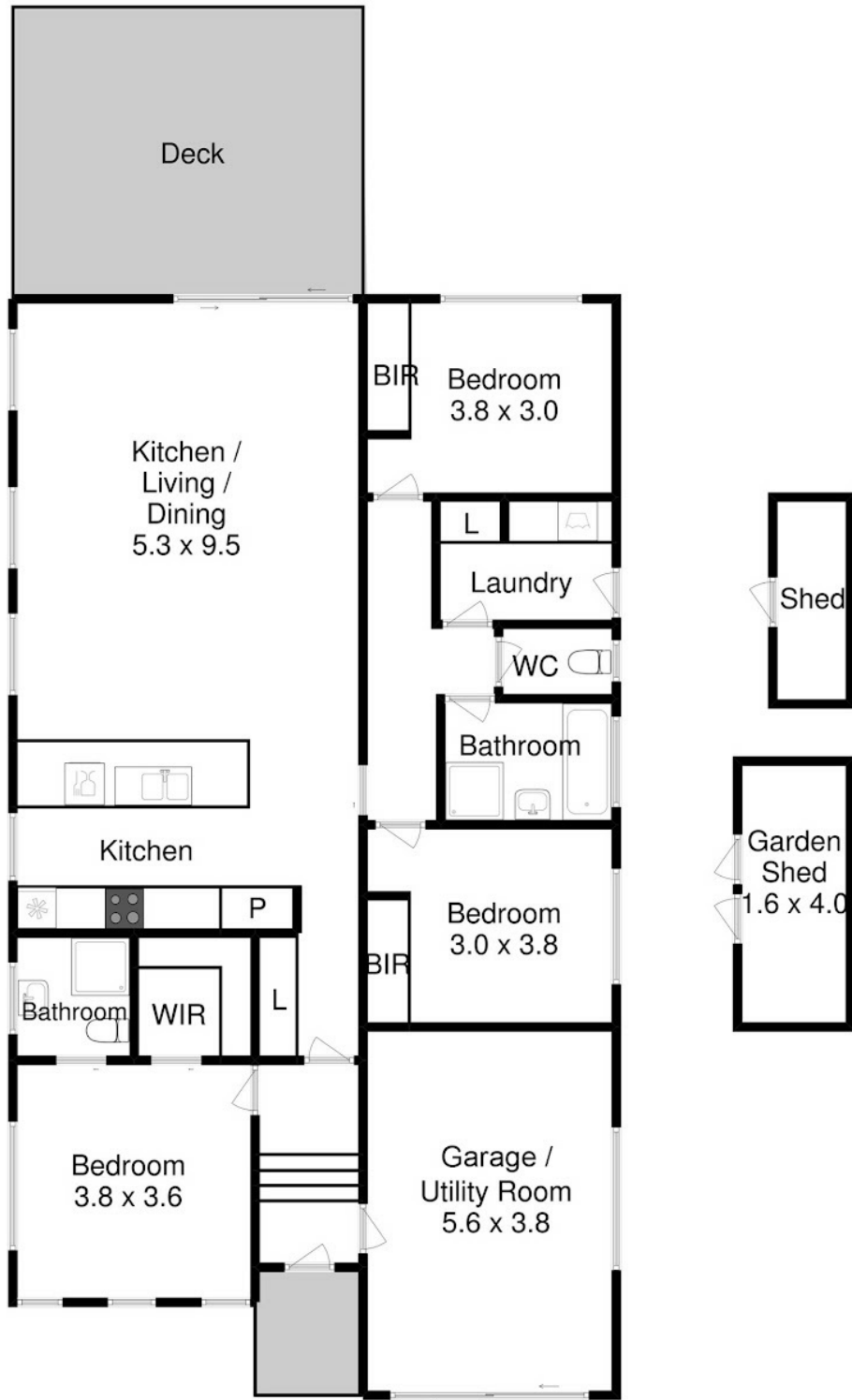
3 BED | 2 BATH | 0 CAR

PRICE:
\$445,000

OPEN FOR INSPECTION:
N/A



Alan Moane
0408124495
alan@atrealty.com.au
www.atrealty.com.au



Approx. house area - 129 sqm
 Approx. garage / utility room area - 21 sqm

Disclaimer: Please note this floor plan is for marketing purposes and is to be used as a guide only. All dimensions are estimates only and may not be exact measurements.

Produced by Open2view.com

REAL ESTATE

Alan Moane
 0408124495
 alan@atrealty.com.au
 www.atrealty.com.au

