

## FOR SALE

**INSPECTION A MUST ! STUNNING APARTMENT  
IN THE HEART OF ASHMORE MUS BE SEEN IN  
PERSON TO BE FULLY APPRECIATED.**

CALL JANINE REDWOOD ON 0419534436 TO ARRANGE A PRIVATE INSPECTION

This Beautiful property has all you need for an easy living, comfortable lifestyle. Nothing to do but move in and enjoy !!!!

- Quality timber flooring throughout living areas
- Spacious open plan kitchen with stone bench tops
- Butlers pantry
- 2 ensuites as well as master bath
- Long balcony accessible from living and master bedroom
- Separate laundry with ample storage
- 3M marine plywood ceilings throughout living , master & 2nd bedroom
- 2 side by side car parks & Large storage cage
- Large Walk-in robe off master
- Pool, spa, sauna, gymnasium
- Formal and informal residents lounges
- Body Corporate \$84 per week (approximately) not including insurance
- Council rates and water rates - \$55 per week (approximately)

Location:

- 1 km to Benowa Village shops
- 1.5 km to Trinity Lutheran College
- 1.6 km to Ashmore State School
- 2 km to Royal Pines Resort and Golf course
- 5 km to Griffith University and Hospital
- 7 km to Surfers Paradise beach

Call Janine on 0419534436 to arrange an inspection.

Disclaimer: We have in preparing this information used our best endeavors to ensure that the information contained herein is true and accurate, but accept no responsibility and disclaim all

**3 BED | 3 BATH | 2 CAR**

**PRICE:**  
Contact Agent

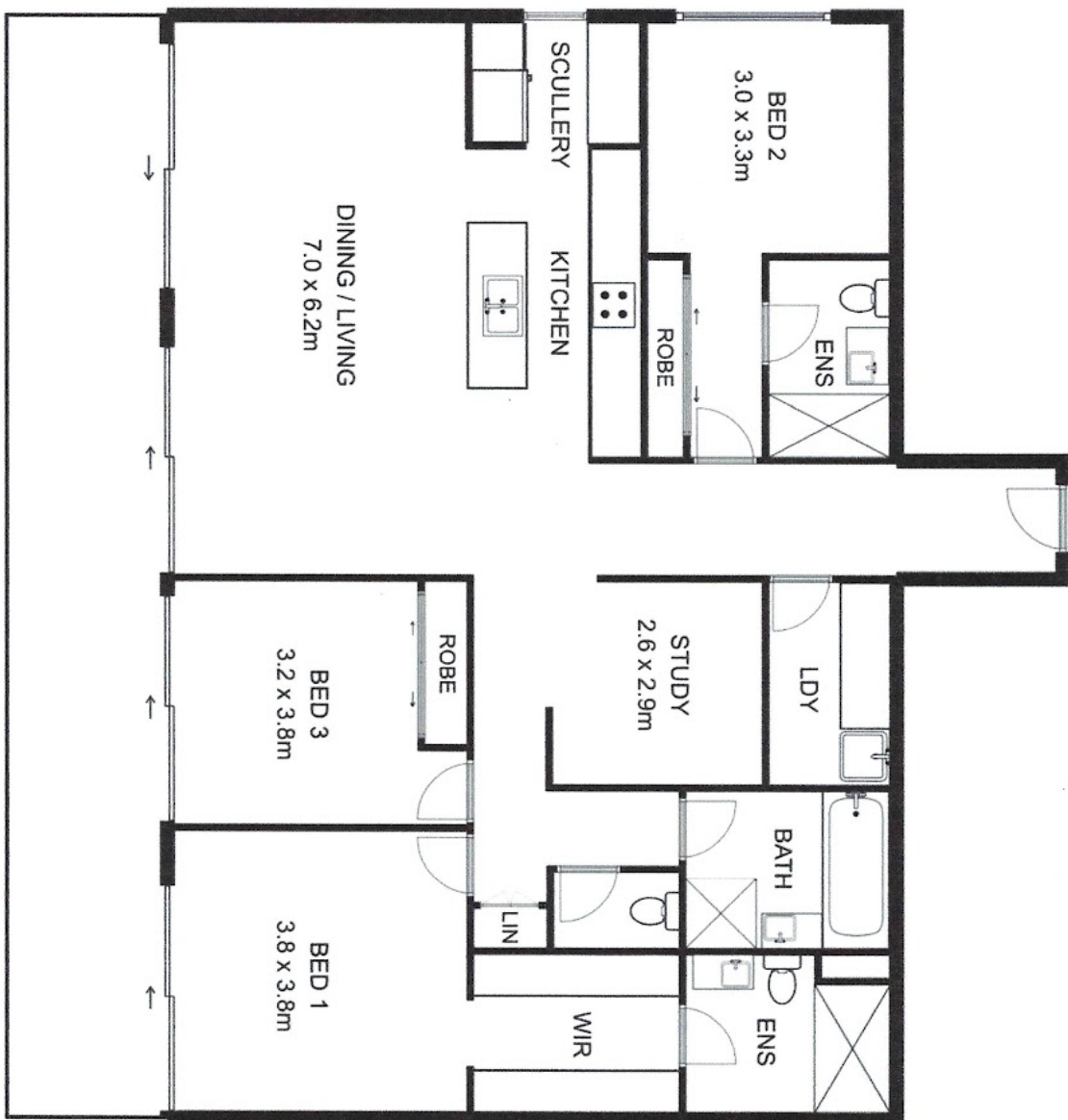
**OPEN FOR INSPECTION:**  
N/A



**Janine Redwood**  
**0419534436**  
janine@atrealty.com.au  
[www.atrealty.com.au](http://www.atrealty.com.au)

INT: 154 sqm  
EXT: 33 sqm  
TOTAL: 187 sqm

## 418/1 HART STREET, ASHMORE



This floor plan is not to scale. Dimensions are estimates only and may not be exact measurements. Therefore plan should be used for illustrative purposes only.

Disclaimer: Please note this floor plan is for marketing purposes and is to be used as a guide only. All dimensions are estimates only and may not be exact measurements.